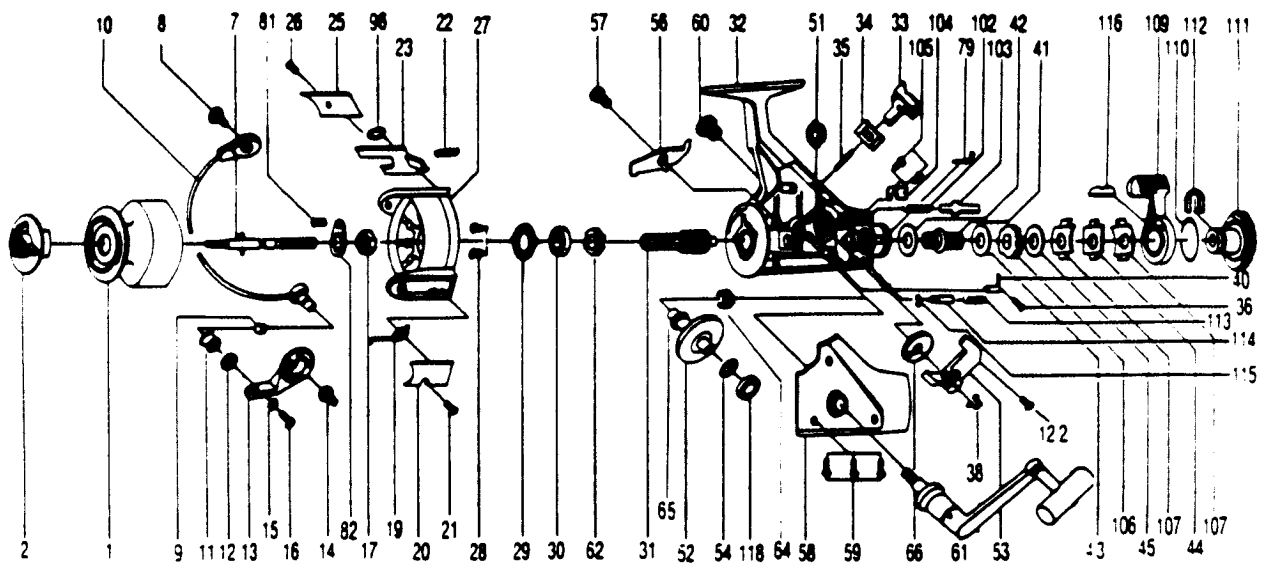


# QUANTUM QSS4



KEY PART NO. NO.	DESCRIPTION	PRICE	KEY PART NO. NO.	DESCRIPTION	PRICE
1 RS321	SPOOL ASSY	7.46	51 RS013	BODY/BODY COVER BUSH	1.14
2 RS050	DRAG KNOB ASSY	4.30	52 RS012	DRIVE GEAR	13.12
7 RS315	MAIN SHAFT ASSY	6.59	53 RS025	OSCILLATING SLIDER	3.15
8 RS048	BAIL HOLDER SCREW	1.72	54 RS026	DRIVE GEAR ADJ. WASH	.46
9 NS016	LINE ROLLER BUSHING	1.66	56 RS063	ANTI-REVERSE CLAW	1.43
10 RS347	BAIL ARM ASSY	6.13	57 RS089	A/R CLAW SCREW	.30
11 NS004	LINE ROLLER	1.72	58 RS323	BODY COVER ASSY	8.60
12 RS017	BAIL COLLAR	1.27	59 RS057	BODY COVER SCREW	.85
13 RS007	ARM LEVER	1.72	60 RS073	HANDLE SCREW CAP	1.14
14 RS031	ARM LEVER SCREW	1.72	61 RS318	HANDLE ASSY	9.46
15 NB102	BAIL AXLE WASHER	.29	62 RS060	RATCHET GEAR	2.59
16 RS108	BAIL SCREW	.58	64 RS086	SLIDING SPRING	.63
17 RS006	ROTOR NUT	.92	65 RS001	O/S GEAR PINION	1.66
19 RS022	BAIL SPRING	.85	66 RS053	OSCILLATING GEAR	1.32
20 RS087	BAIL SPRING COVER	1.14	79 RS005	BACK CLAW	.98
21 RS085	BAIL SPR. CVR. SCR.	.58	81 RS058	ROTOR NUT LOCK SCR.	.58
22 RS049	KICK LEVER SPRING	.46	82 RS088	ROTOR NUT LOCK	1.32
23 RS019	KICK LEVER	1.55	96 RS137	B. BEARING CVR. WASH.	.75
25 RS024	KICK LEVER COVER	1.03	102 RS142	M. SHAFT STOPPER SPR	.34
26 RS037	KICK LVR. CVR. SCR.	.58	103 RS143	M. SHAFT STOPPER	1.27
27 RS009	ROTOR	8.60	104 RS144	STOPPER PLATE	.98
28 RS080	BEARING PLATE SCREW	1.14	105 RS145	STOPPER PLATE SCR.	.58
29 RS040	BEARING PLATE	1.27	106 RS146	SL/HOLDER RATCHET	1.83
30 RS028	BALL BEARING	9.12	107 RS147	DRAG SPR. WASHER A.	1.72
31 RS011	PINION GEAR	7.97	109 RS148	BAIT CLICK ACTUATOR	3.39
32 RS301	BODY ASSY	11.46	110 RS149	BAIT DRAG RING	.92
33 RS059	ANTI-REVERSE LEVER	.85	111 RS150	BAIT CLICK DRAG KN.	1.14
34 RS090	A/R LVR. PLATE SPR.	1.14	112 RS151	BT/CLK DRAG KN. RING	1.14
35 NB091	A/R LEVER PIN	.29	113 RS152	BT/CLK LOCK SH. SPR	.46
36 RS067	CLICK CLAM SCREW	.58	114 RS153	BT/CLK LOCK SHAFT	1.14
38 RS083	OSC. SLIDER STOPPER	3.39	115 RS154	"E" CLIP	.29
40 RS068	CLICK CLAM	.85	116 RS155	BAIT INSERT	2.00
41 RS104	SLIDER HOLDER	1.14	118 RS157	BALL BEARING	9.12
42 RS046	DRAG WASHER "C"	.75	122 RS161	O/S STOPPER SCREW	.58
43 RS047	DRAG WASHER "F"	.85			
44 RS030	DRAG WASHER "A"	1.14			
45 RS039	DRAG WASHER "B"	.85			

Prices subject to change without notice. Prices do not include postage and handling.

**PLEASE ORDER BY PART NUMBER**

Rev. 11/90

Zebco Division Brunswick Corporation, Box 270, Tulsa, OK 74101 USA 918-838-6681

