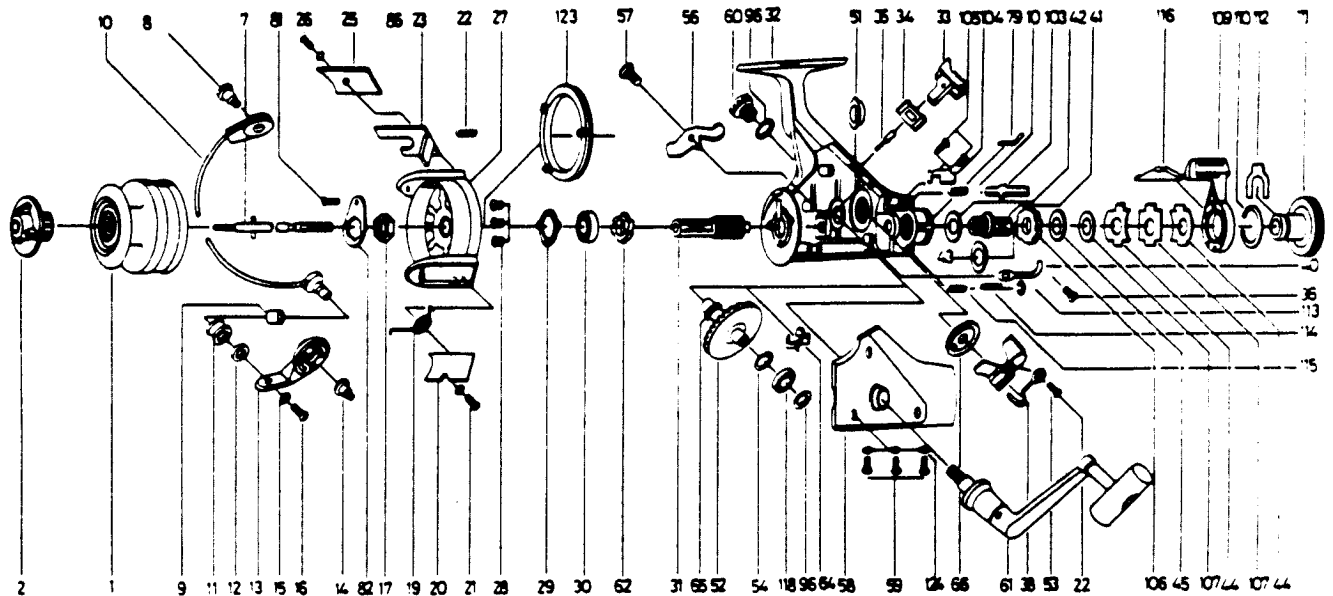


# QUANTUM® QSS4W



KEY PART NO. NO.	DESCRIPTION	PRICE	KEY PART NO. NO.	DESCRIPTION	PRICE	
1	HK321	7.46	53	RS025	OSCILLATING SLIDER	3.15
2	RS050	4.30	54	RS026	DRIVE GEAR ADJ. WASH	.46
7	RS315	6.59	56	RS063	ANTI-REVERSE CLAW	1.43
8	RS048	1.72	57	RS089	A/R CLAW SCREW	.80
9	NS016	1.66	58	HK323	BODY COVER	9.11
10	HK347	6.70	59	RS057	BODY COVER SCREW	.85
11	NS004	1.72	60	RS073	HANDLE SCREW CAP	1.14
12	RS017	1.27	61	RS318	HANDLE ASSY	9.46
13	RS007	1.72	62	RS060	RATCHET GEAR	2.59
14	RS051	1.72	64	RS086	SLIDING SPRING	.63
15	NB102	.29	65	RS001	O/S GEAR PINION	1.66
16	RS108	.58	66	RS053	OSCILLATING GEAR	1.32
17	RS006	.92	79	RS005	BACK CLAW	.98
19	RS022	.85	81	RS058	ROTOR NUT LOCK SCR.	.58
20	RS087	1.14	82	RS088	ROTOR NUT LOCK	1.32
21	RS085	.58	96	RS137	B.BEARING CVR. WASH.	.75
22	RS049	.46	102	RS142	M/SHAFT STOPPER SPR	.34
23	HK019	1.71	103	RS143	M/SHAFT STOPPER	1.27
25	RS024	1.03	104	RS144	STOPPER PLATE	.98
26	RS037	.58	105	RS145	STOPPER PLATE SCR.	.58
27	HK009	9.64	106	RS146	SL/HOLDER RATCHET	1.83
28	RS080	1.14	107	RS147	DRAG SPR. WASHER A	1.72
29	RS040	1.27	109	RS148	BAIT CLICK ACTUATOR	3.39
30	RS028	9.12	110	RS149	BAIT DRAG RING	.92
31	RS011	7.97	111	RS150	BAIT CLICK DRAG KN.	1.14
32	HK301	13.39	112	RS151	BT/CLK DRAG KN.RING	1.14
33	RS059	.85	113	RS152	BT/CLK LOCK SH. SPR	.46
34	RS090	1.14	114	RS153	BT/CLK LOCK SHAFT	1.14
35	NB091	.29	115	RS154	"E" CLIP	.29
36	RS067	.58	116	RS155	BAIT INSERT	2.00
38	RS083	3.39	118	RS157	BALL BEARING	9.12
40	RS068	.85	122	RS161	O/S STOPPER SCREW	.58
41	RS104	1.14	123	HK109	ROTOR INSERT	1.17
42	RS046	.75				
43	RS047	.85				
44	RS030	1.14				
45	RS039	.85				
51	RS013	1.14				
52	RS012	13.12				

Prices subject to change without notice. Prices do not include postage and handling.

**PLEASE ORDER BY PART NUMBER**

Rev. 11/90

Zebco Division Brunswick Corporation, Box 270, Tulsa, OK 74101 USA 918-636-6561

