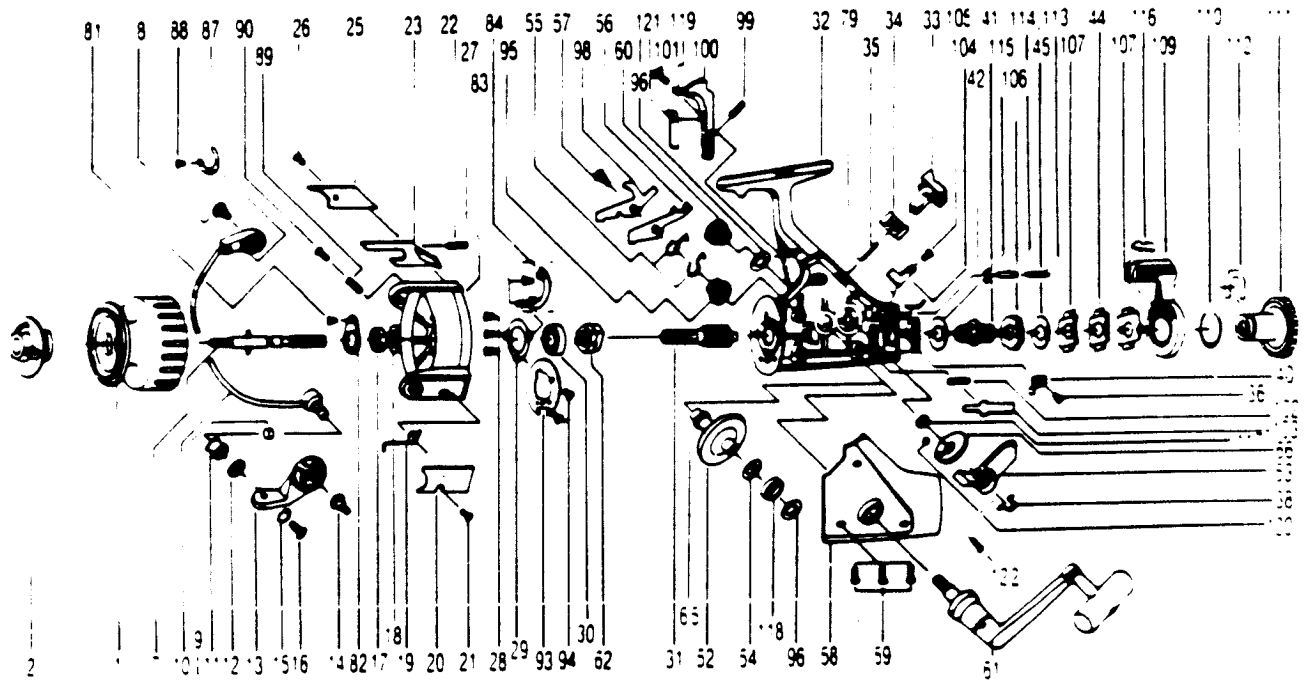


QUANTUM QSS8



KEY PART NO. NO.	DESCRIPTION	PRICE	KEY PART NO. NO.	DESCRIPTION	PRICE
1 US321	SPOOL ASSY	12.04	59 US057	BODY COVER SCREW	.85
2 US050	DRAG KNOB ASSY.	5.73	60 RS073	HANDLE SCREW CAP	1.14
7 US315	MAIN SHAFT ASSY	8.60	61 US318	HANDLE ASSY	13.12
8 US048	BAIL HOLDER SCREW	1.72	62 US060	RATCHET GEAR	4.53
9 SS016	LINE ROLLER BUSHING	1.66	65 US001	O/S GEAR PINION	2.00
10 RS347	BAIL ARM ASSY	6.13	66 US053	OSCILLATING GEAR	1.83
11 US004	LINE ROLLER	1.90	79 US005	BACK CLAW	.98
12 US017	BAIL COLLAR	1.32	81 SS058	ROTOR NUT LOCK SCREW	.58
13 US007	ARM LEVER	1.72	82 SS088	ROTOR NUT LOCK	1.43
14 US051	ARM LEVER SCREW	1.72	83 US182	KICK LEVER GUIDE SCR	.98
15 US102	BAIL WASHER	.46	84 US082	KICK LEVER GUIDE	1.61
16 US108	BAIL SCREW	.85	87 US130	BAIL HOLDER SPRING	1.32
17 US006	ROTOR NUT	1.72	88 US131	BAIL HOLDER SPR SCR	.52
18 US065	ROTOR RETAINER WASHE	.92	89 US132	SPOOL LOCK PIN SPR.	.58
19 US022	BAIL SPRING	1.09	90 US133	SPOOL LOCK PIN	1.14
20 US087	BAIL SPR. COVER	1.27	93 US134	KICK LEVER LOCK PLT.	3.61
21 US085	BAIL SPR. CVR. SCR.	.58	94 US135	KICK LVR LCK PLT SCR	.58
22 US049	KICK LEVER SPRING	.46	95 US136	ANTI-REVERSE GEAR	1.14
23 US019	KICK LEVER	1.66	96 US137	BALL BEARING CVR WSH	.75
25 US024	KICK LEVER COVER	1.27	98 US138	ANTI-REVERSE CLAW B	1.78
26 RS037	KICK LVR. CVR. SCR.	.58	99 US139	A/R ACTUATOR SPR.	.58
27 US009	ROTOR	11.46	100 US140	A/R ACTUATOR	1.14
28 RS080	BEARING PLATE SCREW	1.14	101 US141	A/R ACTUATOR SCR.	.58
29 US040	BEARING PLATE	1.43	102 US142	MAIN SHAFT STOP. SP	.58
30 US028	BALL BEARING	9.12	103 US143	MAIN SHAFT STOPPER	1.43
31 US011	PINION GEAR	10.26	104 US144	STOPPER PLATE	1.14
32 US301	BODY ASSY	13.46	105 RS145	STOPPER PLATE SCR.	.58
33 US059	ANTI-REVERSE LEVER	1.03	106 US146	SL. HOLDER RATCHET	2.00
34 US090	A/R LEVER PLATE SCR.	1.27	107 US147	DRAG SPR. WASHER A	2.87
35 NS091	A/R LEVER PIN	.29	108 US148	BAIL CLICK ACTUATOR	3.44
36 US067	CLICK CLAW SCREW	.58	110 US149	BAIT DRAG RING	.98
38 US083	OSC. SLIDER STOPPER	3.44	111 US150	BAIT CLICK DRAG KN.	2.00
40 US068	CLICK CLAW	.85	112 US151	BT CLICK DRAG KN RE	1.43
41 US104	SLIDER HOLDER	1.27	113 US152	BT CLICK LOCK SH SP	.58
42 US046	DRAG WASHER "C"	.75	114 US153	BT CLICK LOCK SHAFT	1.27
44 US030	DRAG WASHER "A"	1.72	115 US154	"E" CLIP	.29
45 US039	DRAG WASHER "B"	1.27	116 US155	BAIT INSERT	2.12
52 US012	DRIVE GEAR	14.85	117 US156	O/S GEAR BUSHING	1.27
53 US025	OSCILLATING SLIDER	3.39	118 US157	BALL BEARING	9.12
54 US026	DRIVE GEAR ADJ. WSHR	.46	119 US158	A/R ACT CV OSC BUSH	.85
55 US061	A/R CLAW SPRING	.92	120 US159	O/S GEAR BOSS BUSH	1.27
56 US063	A/R CLAW	1.90	121 US160	A/R ACTUATOR COVER	1.32
57 US089	A/R CLAW SCREW	.92	122 RS161	O/S STOPPER SCREW	.58
58 US323	BODY COVER ASSY	8.88			

Prices subject to change without notice. Prices do not include postage and handling.

PLEASE ORDER BY PART NUMBER

Rev. 11/90

Zebco Division Brunswick Corporation, Box 270, Tulsa, OK 74101 USA 918-836-5581

