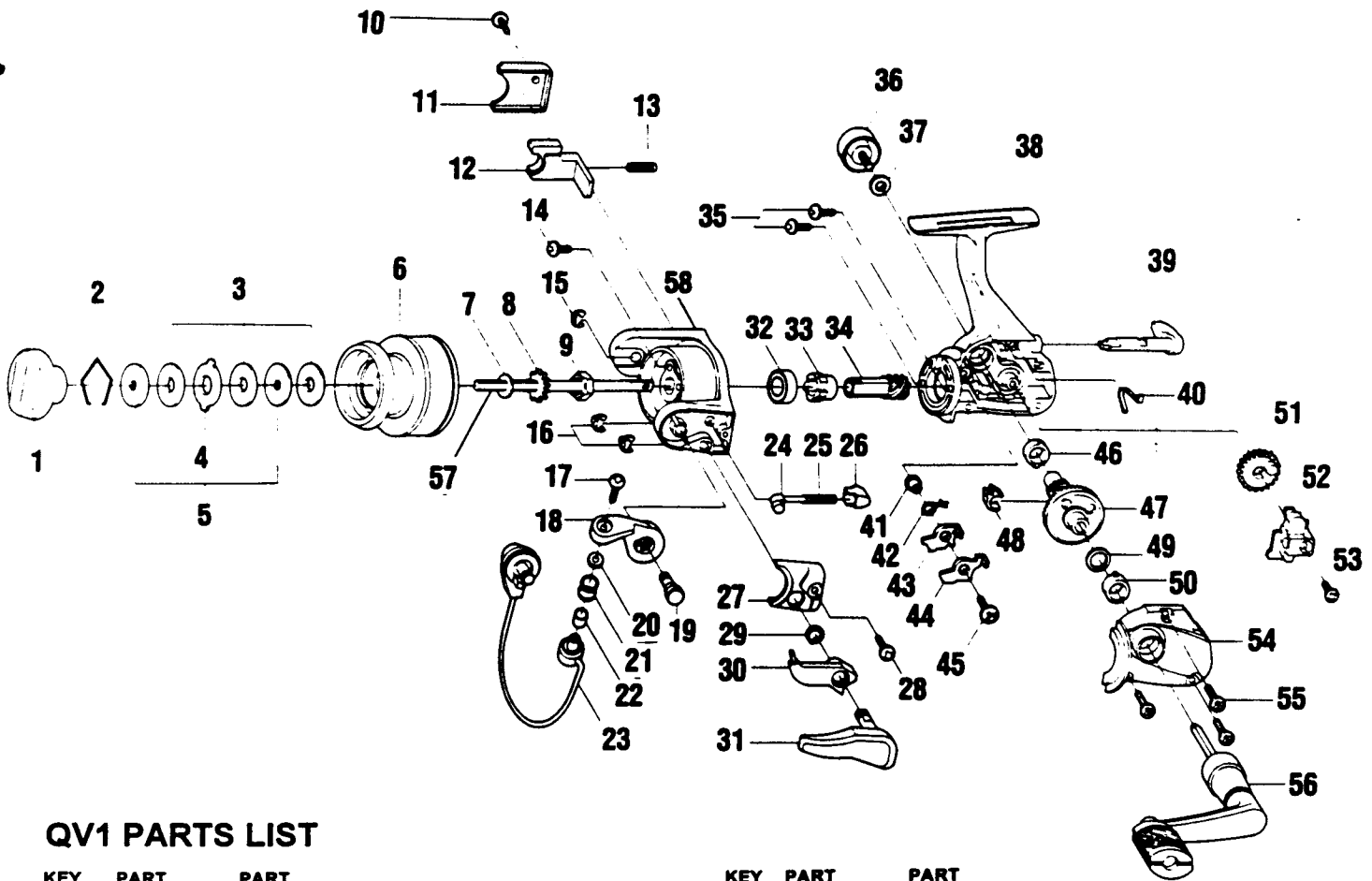


QUANTUM.

QV1



QV1 PARTS LIST

KEY NO.	PART NO.	PART DESCRIPTION	PRICE	KEY NO.	PART NO.	PART DESCRIPTION	PRICE
1	GU332-01	DRAG KNOB ASSEMBLY	2.80	31	GU115-01	TRIGGER ASSEMBLY	3.50
2	GU038-01	DRAG RETAINER	0.25	32	AQ028-01	BALL BEARING	6.55
3	GU105-05	DRAG WASHER "B"	0.65	33	GU060-01	RATCHET GEAR	2.00
4	GU081-01	DRAG WASHER "A"	0.50	34	GU011-01	PINION GEAR	1.60
5	GU080-01	DRAG WASHER "D"	0.50	35	GU077-01	BEARING SCREW	0.15
6	XU321-11	SPOOL ASSEMBLY	8.55	36	GU073-01	HANDLE SCREW CAP	0.60
7	GU105-06	SPOOL ADJUSTMENT WASHER	0.35	37	GU105-01	HANDLE CAP WASHER	0.10
8	GU037-01	CLICK GEAR	0.50	38	GU001-24	BODY	3.00
9	GU006-01	ROTOR NUT	0.30	39	GU090-01	ANTI REVERSE STOPPER LEVER	1.45
10	GU077-02	KICK LEVER COVER SCREW	0.15	40	GU089-01	ANTI REVERSE LEVER SPRING	0.50
11	GU046-01	KICK LEVER COVER	0.20	41	GU091-01	ANTI REVERSE PAWL POST	0.25
12	GU019-01	KICK LEVER	0.40	42	GU061-01	ANTI REVERSE PAWL SPRING	0.35
13	KQ049-01	KICK LEVER SPRING	0.25	43	GU063-01	ANTI-REVERSE PAWL "A"	0.45
14	GU077-04	ROTOR NUT LOCK SCREW	0.25	44	GU074-01	ANTI-REVERSE PAWL "B"	0.45
15	KQ034-01	E-CLIP	0.15	45	GU077-05	ANTI-REVERSE PAWL SCREW	0.15
16	KQ034-01	E-CLIP	0.15	46	GU157-01	GEAR SHAFT BALL BEARING	6.55
17	KQ108-01	LINE SLIDER SCREW	0.30	47	GU012-01	DRIVE GEAR	2.80
18	XU007-01	ARM LEVER	1.40	48	GU086-01	SILENT CAM	0.40
19	GU051-06	ARM LEVER PIN	1.00	49	GU105-08	DRIVE GEAR ADJ. WASHER	0.15
20	EQ017-01	LINE ROLLER WASHER	0.66	50	GU157-01	BODY COVER BALL BEARING	6.55
21	EQ004-01	LINE ROLLER BEARING	7.73	51	GU053-01	OSCILLATOR GEAR	0.85
23	GU347-16	BAIL ASSEMBLY	5.41	52	GU025-01	OSCILLATOR SLIDER	0.85
24	KQ031-01	ARM LEVER SPRING PIN	0.25	53	GU100-01	MAIN SHAFT SCREW	0.15
25	KQ049-03	ARM LEVER SPRING	0.35	54	GU023-24	BODY COVER	1.85
26	QL020-01	ARM LEVER SPRING HOLDER	0.30	55	GU057-01	BODY COVER SCREW	0.15
27	GU087-01	ARM LEVER SPRING COVER	0.20	58	GU318-01	HANDLE ASSEMBLY	6.39
28	GU077-02	ARM LEVER COVER SCREW	0.15	57	GU015-01	MAIN SHAFT	0.85
29	NL096-01	TRIGGER SPRING	0.80	58	GU009-17	ROTOR	2.60
30	GU097-01	TRIGGER LINK ASSEMBLY	1.85				

Prices subject to change without notice. Prices do not include postage and handling.

PLEASE ORDER BY PART NUMBER

Rev 9/95

Zebco Division of Brunswick Corporation, Box 270, Tulsa, OK. 74101 USA 918-831-6989

BC
BRUNSWICK