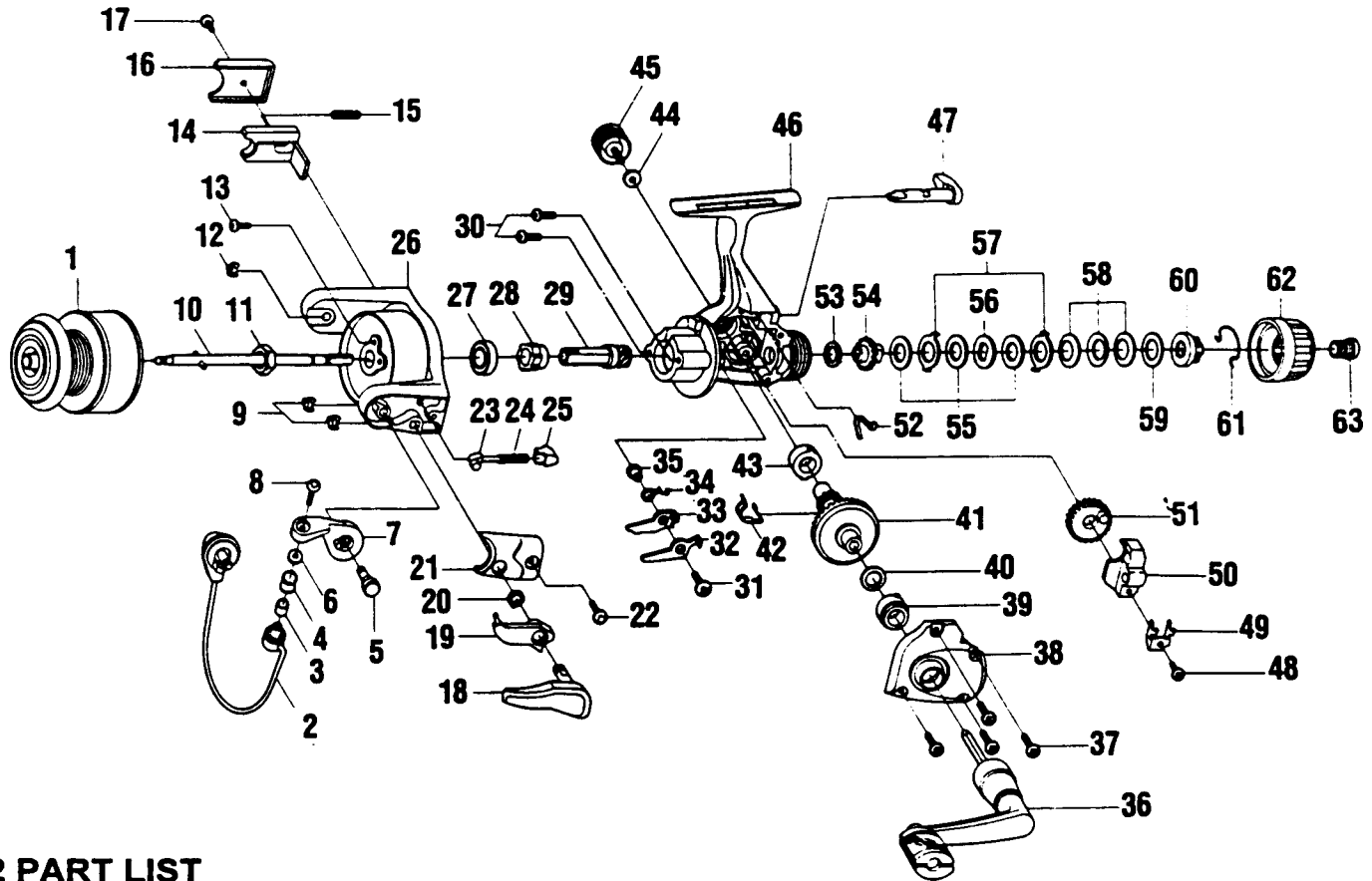


QUANTUM.

QV2



QV2 PART LIST

KEY NO.	PART NUMBER	PART DESCRIPTION	PRICE	KEY NO.	PART NUMBER	PART DESCRIPTION	PRICE
1	JU321-29	SPOOL ASSEMBLY	8.55	33	GU074-01	ANTI-REVERSE PAWL "B"	0.45
2	GU347-21	BAIL ASSEMBLY	5.46	34	GU061-01	ANTI-REVERSE PAWL SPRING	0.35
4	EQ004-01	LINE ROLLER BALL BEARING	7.73	35	GU091-01	ANTI-REVERSE PAWL POST	0.25
5	GU051-03	ARM LEVER PIN	1.00	36	NU318-01	HANDLE ASSEMBLY	2.09
6	EQ017-01	LINE ROLLER WASHER	1.49	37	GU057-01	BODY COVER SCREW	0.15
7	HU007-01	ARM LEVER	1.65	38	HU023-09	BODY COVER	2.00
8	KQ108-01	LINE SLIDER SCREW	0.30	39	GU157-01	GEAR SHAFT BEARING	6.55
9	KQ034-01	E-CLIP	0.15	40	GU105-08	ADJUSTMENT WASHER	0.15
10	JU315-02	MAIN SHAFT ASSEMBLY	1.00	41	GU012-01	DRIVE GEAR	2.80
11	GU006-01	ROTOR NUT	0.30	42	GU086-01	SILENT CAM	0.40
12	KQ034-01	E-CLIP	0.15	43	GU157-01	GEAR SHAFT BEARING	6.55
13	GU077-04	ROTOR NUT LOCK SCREW	0.15	44	GU105-01	HANDLE SCREW WASHER	0.10
14	HU019-01	KICK LEVER	0.50	45	GU073-01	HANDLE SCREW	0.60
15	KQ049-04	KICK LEVER SPRING	0.30	46	HU001-09	BODY	3.60
16	HU046-01	KICK LEVER COVER	0.25	47	GU090-01	ANTI-REVERSE LEVER	1.45
17	GU077-02	KICK LEVER COVER SCREW	0.15	48	JU100-01	OSCILLATOR RETAINER SCREW	0.25
18	GU115-02	TRIGGER ASSEMBLY	0.15	49	HU078-01	OSCILLATOR SLIDE RETAINER	0.25
19	GU097-02	TRIGGER LINK ASSEMBLY	3.50	50	HU025-01	OSCILLATOR SLIDER	1.00
20	NL096-01	TRIGGER SPRING	1.65	51	HU053-01	OSCILLATOR GEAR	1.00
21	HU087-01	ARM LEVER SPRING COVER	0.65	52	GU089-01	ANTI-REVERSE LEVER SPRING	0.50
22	GU077-02	ARM LEVER COVER SCREW	0.15	53	GU105-34	DRAG FRICTION WASHER	0.88
23	NL031-01	ARM LEVER SPRING PIN	0.25	54	HU075-01	DRAG CLICK GEAR	1.40
24	KQ049-05	ARM LEVER SPRING	0.35	55	GU105-35	DRAG WASHER "B"	0.88
25	QL020-01	ARM LEVER SPRING HOLDER	0.30	56	HU080-01	DRAG WASHER "D"	0.50
26	HU009-12	ROTOR	3.15	57	HU081-01	DRAG WASHER "A"	0.50
27	AQ028-01	BALL BEARING	6.55	58	HU043-01	DRAG SPRING	0.65
28	HU060-01	ANTI-REVERSE RATCHET	2.00	59	GU105-24	DRAG WASHER	0.88
29	GU011-02	PINION GEAR	1.95	60	HU066-01	DRAG NUT	0.60
30	GU077-01	BEARING SCREW	0.15	61	HU070-01	DRAG CLICK SPRING	1.10
31	GU077-05	ANTI-REVERSE PAWL SCREW	0.15	62	HU032-01	DRAG KNOB	0.75
32	GU063-01	ANTI-REVERSE PAWL "A"	0.45	63	HU101-01	DRAG KNOB SCREW	0.60

Prices subject to change without notice. Prices do not include postage and handling.

PLEASE ORDER BY PART NUMBER

Rev 9/95

Zebco Division of Brunswick Corporation, Box 270, Tulsa, OK. 74101 USA 918-831-6989

