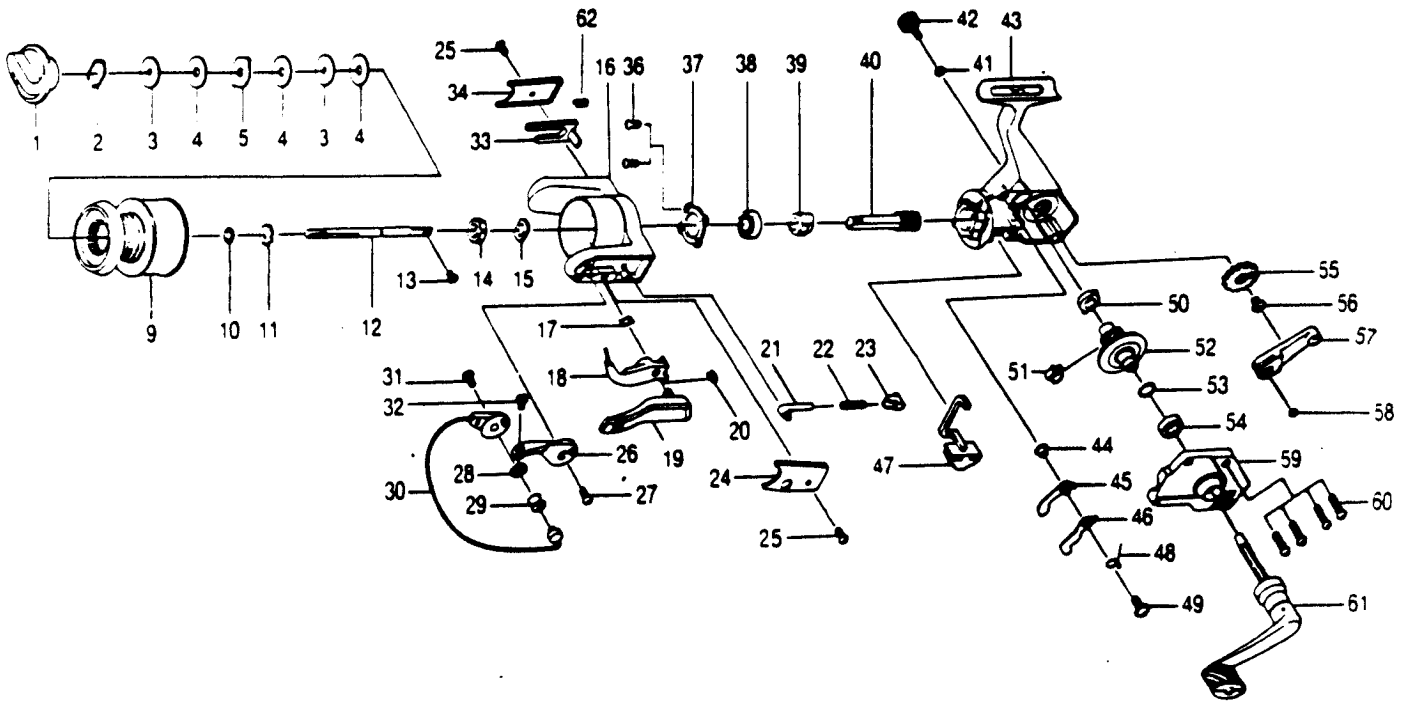


# QUANTUM SL3



KEY PART NO.	DESCRIPTION	PRICE
1 BQ332	DRAG KNOB ASSY.	2.05
2 AQ038	DRAG RETAINER	.95
3 AQ050	SPOOL WASHER 'C'	.62
4 AQ033	SPOOL WASHER 'A'	.62
5 AQ029	SPOOL WASHER 'B'	.62
9 BQ321	SPOOL ASSY.	7.45
10 BQ030	SPOL ADJ. WASHER	.55
11 BQ037	SPOOL CLICK CLAM	1.15
12 BQ015	MAIN SHAFT	3.00
13 AQ100	MAIN SHAFT SCREW	.75
14 QL006	ROTOR NUT	1.45
15 QL065	ROTOR RETAINER WASHER	.62
16 BQ009	ROTOR	3.45
17 NL096	TRIP LINK SPRING	.67
18 PLO97	TRIP LINK	1.20
19 PL115	TRIP LEVER	2.25
20 NL034	E-CLIP	.67
21 QL031	SPRING SHAFT	.62
22 QLO22	BAIL SPRING	.62
23 QLO20	SPRING HOLDER	.52
24 BQ087	BAIL SPRING COVER	.62
25 AQ085	ROTOR COVER SCREW	.67
26 PLO07	ARM LEVER	1.13
27 AQ051	ARM LEVER SCREW	.62
28 PLO17	BAIL COLLAR	1.20
29 PLO04	LINK ROLLER	2.05
30 BQ347	BAIL ASSY.	6.50
31 AQ044	BAIL HOLDER SCREW	.62
32 AQ108	BAIL SCREW	.62

KEY PART NO.	DESCRIPTION	PRICE
33 YK019	KICK LEVER	1.93
34 BQ024	KICK LEVER COVER	.52
36 AQ080	BEARING PLATE SCREW	.62
37 QL040	BEARING PLATE	.57
38 BQ028	B/BEARING - ROTOR	7.75
39 BQ060	RATCHET GEAR	2.45
40 BQ011	PINION GEAR	5.95
41 BQ105	HANDLE CAP WASHER	.52
42 AL073	HANDLE SCREW	1.35
43 BQ001	BODY	5.95
44 NL091	STOPPER BUSHING	.57
45 BQ064	STOPPER 'A'	1.05
46 BQ063	STOPPER 'B'	1.15
47 BQ059	STOPPER LEVER	.57
48 BQ061	STOPPER L/R SPRING	.57
49 AQ083	STOPPER SCREW	.62
50 AQ013	BODY BUSHING	.62
51 AQ086	SLIDING SPRING	.62
52 BQ012	DRIVE GEAR	2.25
53 AQ026	DRIVE GEAR ADJ. WASHER	.52
54 AL013	BODY BUSHING	.62
55 BQ053	O/S GEAR	1.05
56 WK078	OSC. GEAR SCREW	1.39
57 BQ025	O/S PIVOT ARM	1.50
58 AQ056	O/S PIVOT ARM WASHER	.52
59 BQ023	BODY COVER	3.15
60 AQ057	BODY COVER SCREW	.62
61 AL318	HANDLE ASSY.	5.25
62 YK049	KICK LEVER SPRING	.97

Prices subject to change without notice. Prices do not include postage and handling.

**PLEASE ORDER BY PART NUMBER**

Rev. 11/90

Zebco Division Brunswick Corporation, Box 270, Tulsa, OK 74101 USA 918-638-6881

**BC**  
BRUNSWICK