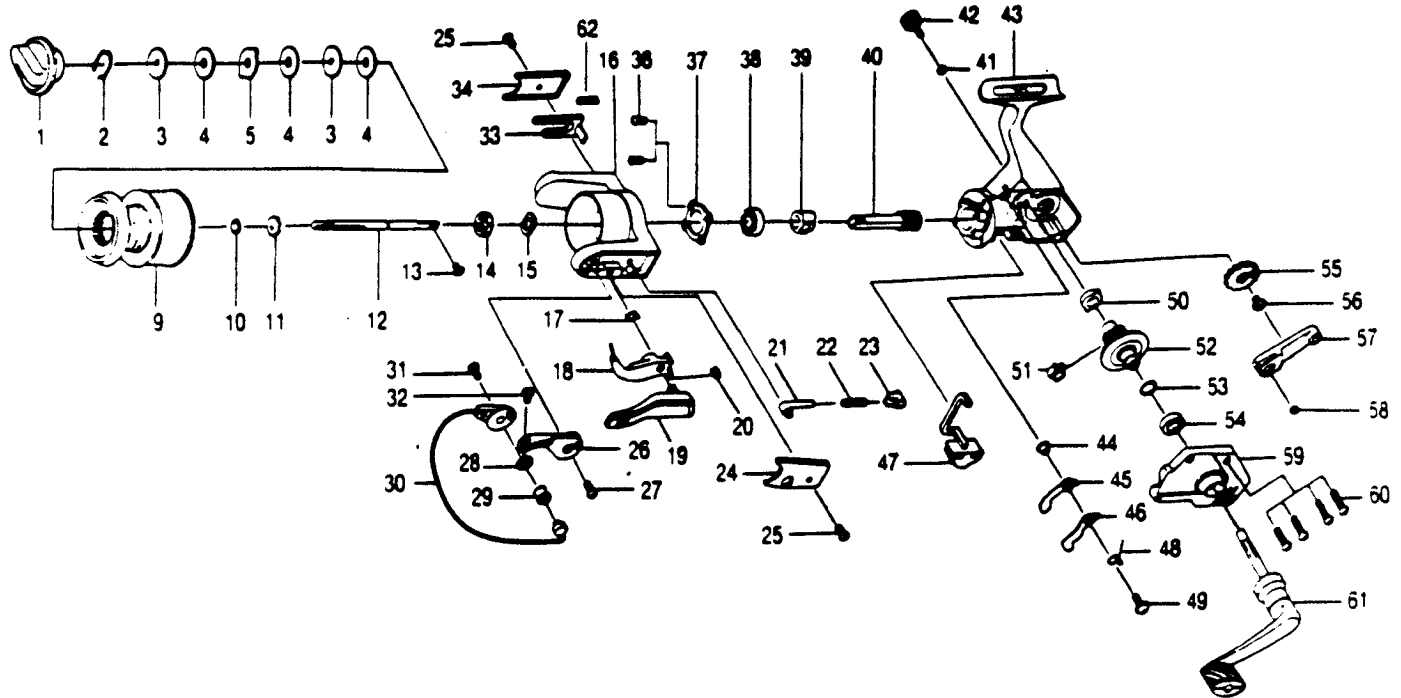


QUANTUM SLX2



KEY PART NO. NO.	DESCRIPTION	PRICE	KEY PART NO. NO.	DESCRIPTION	PRICE
1 EQ332	DRAG KNOB ASSEY.	1.95	34 EQ024	KICK LEVER COVER	.62
2 AQ038	DRAG RETAINER	.95	36 AQ080	BEARING PLATE SCREW	.62
3 AQ050	SPOOL WASHER 'C'	.62	37 PLO40	BEARING PLATE	.57
4 AQ033	SPOOL WASHER 'A'	.62	38 AQ028	BODY BEARING - ROTOR	7.75
9 EQ321	SPOOL ASSEY.	7.25	39 PLO60	RATCHET GEAR	2.45
10 AQ030	SPOOL ADJ. WASHER	.55	40 AQ011	PINION GEAR	5.95
11 AQ037	SPOOL CLICK CLAW	1.15	41 AQ105	HANDLE CAP WASHER	.52
12 AQ015	MAIN SHAFT	2.95	42 NLO73	HANDLE SCREW CAP	1.29
13 AQ100	MAIN SHAFT SCREW	.75	43 EQ001	BODY	5.95
14 NLO06	ROTOR NUT	1.35	44 NLO91	STOPPER BUSHING	.57
15 NLO65	ROTOR RETAINER WASHER	.62	45 NLO64	STOPPER 'A'	1.05
16 EQ009	ROTOR	3.25	46 NLO63	STOPPER 'B'	1.15
17 NLO96	TRIP LINE SPRING	.67	47 AQ059	STOPPER LEVER	.57
18 PLO97	TRIP LINK	1.20	48 AQ061	STOPPER L/R SPRING	.57
19 PL115	TRIP LEVER	2.25	49 AQ063	STOPPER SCREW	.62
20 NLO34	E-CLIP	.67	50 AQ013	BODY BUSHING	.62
21 NLO31	SPRING SHAFT	.62	51 AQ086	SLIDING SPRING	.62
22 NLO22	BAIL SPRING	.62	52 EQ012	DRIVE GEAR	2.15
23 PLO20	SPRING HOLDER	.52	53 AQ026	DRIVE GEAR ADJ. WASHER	.52
24 EQ087	BAIL SPRING COVER	.62	54 EQ157	B/S BODY COVER	.62
25 AQ085	ROTOR COVER SCREW	.67	55 AQ083	O/S GEAR	1.05
26 PLO07	ARM LEVER	1.15	56 AQ078	O/S GEAR SCREW	1.05
27 AQ051	ARM LEVER SCREW	.62	57 AQ025	O/S PIVOT ARM	1.50
28 PLO17	BAIL COLLAR	1.20	58 AQ056	O/S PIVOT ARM WASHER	.52
29 PLO04	LINE ROLLER	2.05	59 EQ023	BODY COVER	3.05
30 AQ347	BAIL ASSEY.	6.35	60 AQ057	BODY COVER SCREW	.62
31 AQ044	BAIL HOLDER SCREW	.62	61 NLO18	HANDLE ASSEY.	5.15
32 AQ108	BAIL SCREW	.62	62 NLO49	KICK LEVER SPRING	.75
33 AQ019	KICK LEVER	1.35			

Prices subject to change without notice. Prices do not include postage and handling.

PLEASE ORDER BY PART NUMBER

Rev. 11/90

Zebco Division Brunswick Corporation, Box 270, Tulsa, OK 74101 USA 918-638-6581

