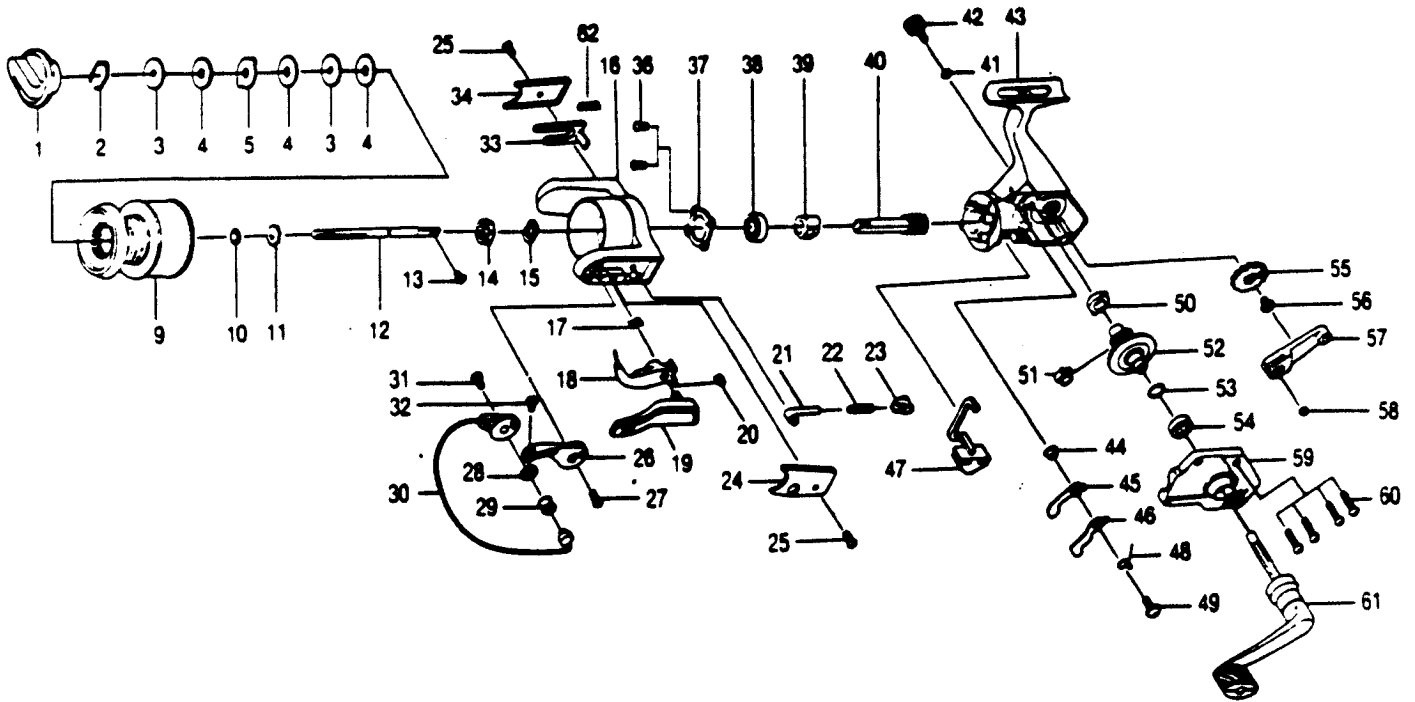


QUANTUM® SLX3



KEY PART NO. NO.

KEY PART NO. NO.	DESCRIPTION	PRICE
1 FQ332	DRAG KNOB ASBY.	2.05
2 AQQ38	DRAG RETAINER	.95
3 AQQ50	SPOOL WASHER 'C'	.62
5 AQQ29	SPOOL WASHER 'B'	.62
9 FQ321	SPOOL ASBY.	7.45
10 BQQ30	SPOOL ADJ. WASHER	.55
11 BQQ37	SPOOL CLICK CLAM	1.15
12 BQQ15	MAIN SHAFT	3.00
13 AQL00	MAIN SHAFT SCREW	.75
14 QLO06	ROTOR NUT	1.45
15 QLO65	ROTOR RETAINER WASHER	.62
16 FQ009	ROTOR	3.45
17 NLO96	TRIP LINK SPRING	.67
18 FLO97	TRIP LINE	1.20
19 FL115	TRIP LEVER	2.25
20 NLO36	E-CLIP	.67
21 QLO31	SPRING SHAFT	.62
22 QLO22	BAIL SPRING	.62
23 QLO20	SPRING HOLDER	.52
24 FQ087	BAIL SPRING COVER	.62
25 AQQ85	ROTOR COVER SCREW	.67
26 FLO07	ARM LEVER	1.13
27 AQQ51	ARM LEVER SCREW	.62
28 FLO17	BAIL COLLAR	1.20
29 FLO04	LINE ROLLER	2.05
30 BQ347	BAIL ASBY.	6.50
31 AQQ44	BAIL HOLDER SCREW	.62
32 AQL08	BAIL SCREW	.62
33 YK019	KICK LEVER	1.93

KEY PART NO. NO.

KEY PART NO. NO.	DESCRIPTION	PRICE
34 FQ024	KICK LEVER COVER	.62
36 AQQ80	BEARING PLATE SCREW	.62
37 QLO40	BEARING PLATE	.57
38 BQQ28	B/BEARING - ROTOR	7.75
39 BQQ60	RATCHET GEAR	2.45
40 FQ011	PINION GEAR	5.95
41 BQ105	HANDLE CAP WASHER	.52
42 AL073	HANDLE SCREW	1.35
43 BQ001	BODY	5.95
44 NLO91	STOPPER BUSHING	.57
45 BQQ64	STOPPER 'A'	1.05
46 BQQ63	STOPPER 'B'	1.15
47 BQ059	STOPPER LEVER	.57
48 BQQ61	STOPPER L/R SPRING	.57
49 AQQ83	STOPPER SCREW	.62
50 AQQ13	BODY BUSHING	.62
51 AQQ86	SLIDING SPRING	.62
52 FQ012	DRIVE GEAR	2.25
53 AQQ26	DRIVE GEAR ADJ. WASHER	.52
54 AL013	BODY BUSHING	.62
55 BQ053	O/S GEAR	1.05
56 NED78	O/S GEAR SCREW	1.39
57 BQ025	O/S PIVOT ARM	1.50
58 AQQ86	O/S PIVOT ARM WASHER	.52
59 FQ023	BODY COVER	3.15
60 AQQ87	BODY COVER SCREW	.62
61 AL318	HANDLE ASBY.	5.25
62 YK049	KICK LEVER SPRING	.97

Prices subject to change without notice. Prices do not include postage and handling.

PLEASE ORDER BY PART NUMBER

Rev. 11/80

Zebco Division Brunswick Corporation, Box 270, Tulsa, OK 74101 USA 918-636-6881

