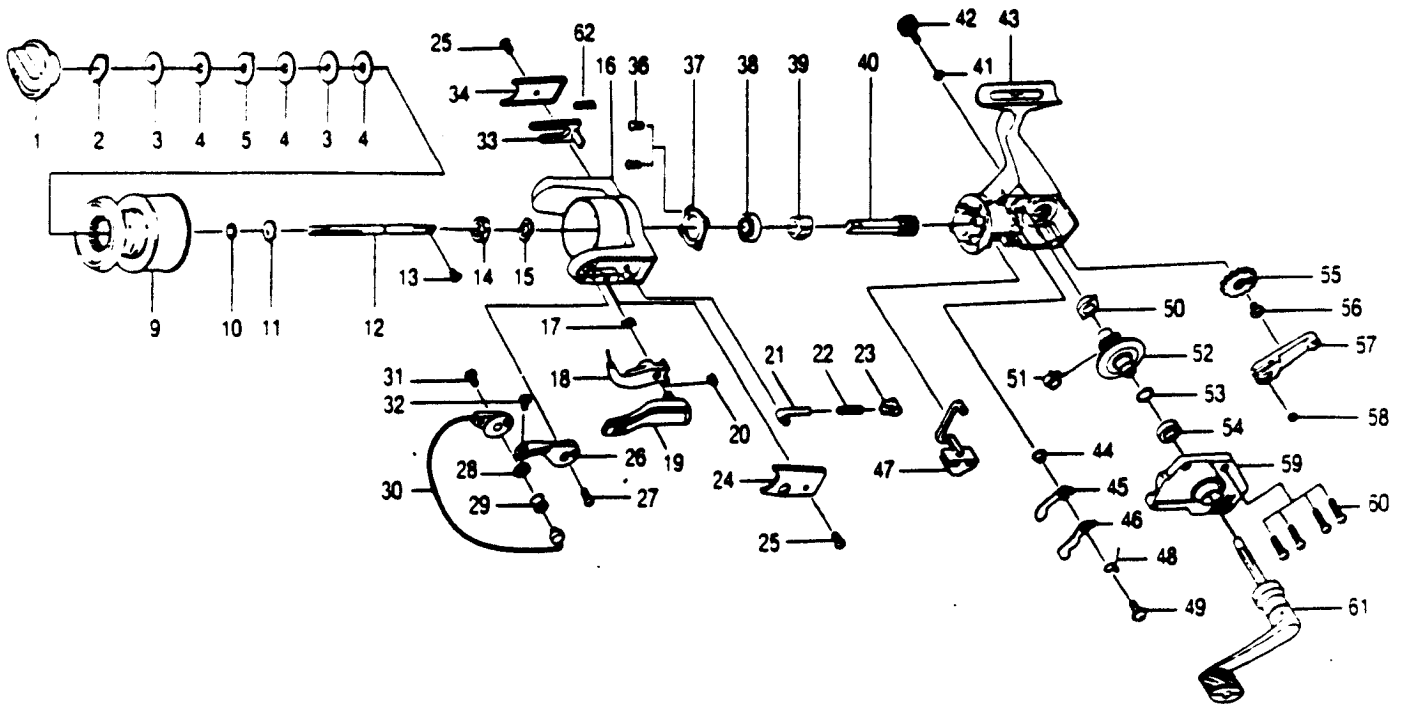


QUANTUM SLX4



KEY PART NO. NO.

KEY PART NO. NO.	DESCRIPTION	PRICE
1 G0332	DRAG KNOB ASSY.	2.05
2 C0038	DRAG RETAINER	1.05
3 C0050	SPOOL WASHER 'C'	.62
4 C0033	SPOOL WASHER 'A'	.62
5 C0029	SPOOL WASHER 'B'	.62
9 G0321	SPOOL ASSY.	7.95
10 C0030	SPOOL ADJ. WASHER	.55
11 C0037	SPOOL CLICK CLAW	1.15
12 C0015	MAIN SHAFT	3.10
13 C0100	MAIN SHAFT SCREW	.75
14 UL006	ROTOR NUT	1.05
15 UL065	ROTOR RETAINER WASHER	.67
16 G0009	ROTOR	3.65
17 NL096	TRIP LINK SPRING	.67
18 PL097	TRIP LINK	1.20
19 C0115	TRIP LEVER	2.25
20 NL034	E-CLIP	.67
21 QL031	SPRING SHAFT	.62
22 QL022	BAIL SPRING	.62
23 QL020	SPRING HOLDER	.52
24 G0087	BAIL SPRING COVER	.62
25 A0085	ROTOR COVER SCREW	1.25
26 C0007	ARM LEVER	1.25
27 A0051	ARM LEVER SCREW	.62
28 PL017	BAIL COLLAR	1.20
29 PLO04	LINE ROLLER	2.05
30 C0347	BAIL ASSY.	6.50
31 A0044	BAIL HOLDER SCREW	.62
32 A0108	BAIL SCREW	.62
33 C0019	KICK LEVER	1.45

KEY PART NO. NO.

KEY PART NO. NO.	DESCRIPTION	PRICE
34 G0024	KICK LEVER COVER	.62
36 A0080	BEARING PLATE SCREW	.62
37 QL040	BEARING PLATE	.57
38 C0028	B/BEARING - ROTOR	7.75
39 C0060	RATCHET GEAR	2.45
40 G0011	PINION GEAR	6.25
41 B0105	HANDLE CAP WASHER	.52
42 QL073	HANDLE SCREW CAP	1.35
43 G0001	BODY	6.25
44 NL091	STOPPER BUSHING	.57
45 QL044	STOPPER 'A'	1.05
46 QL063	STOPPER 'B'	1.15
47 C0059	STOPPER LEVER	.57
48 C0061	STOPPER L/R SPRING	.57
49 C0063	STOPPER SCREW	.62
50 G0013	BODY BUSHING	.62
51 C0086	SLIDING SPRING	.62
52 G0012	DRIVE GEAR	2.25
53 A0026	DRIVE GEAR ADJ. WASHER	.52
54 AL013	BODY BUSHING	.62
55 C0053	BODY BEARING - ROTOR	1.05
56 WR078	O/C. GEAR SCREW	1.39
57 C0025	O/S PIVOT ARM	1.50
58 A0056	O/S PIVOT ARM WASHER	.52
59 G0023	BODY COVER	3.15
60 A0057	BODY COVER SCREW	.62
61 QL318	HANDLE ASSY.	7.73
62 Y0049	KICK LEVER SPRING	.97

Prices subject to change without notice. Prices do not include postage and handling.

PLEASE ORDER BY PART NUMBER

Rev. 11/90

Zaboo Division Brunswick Corporation, Box 270, Tulsa, OK 74101 USA 010-636-6681

BC
BRUNSWICK