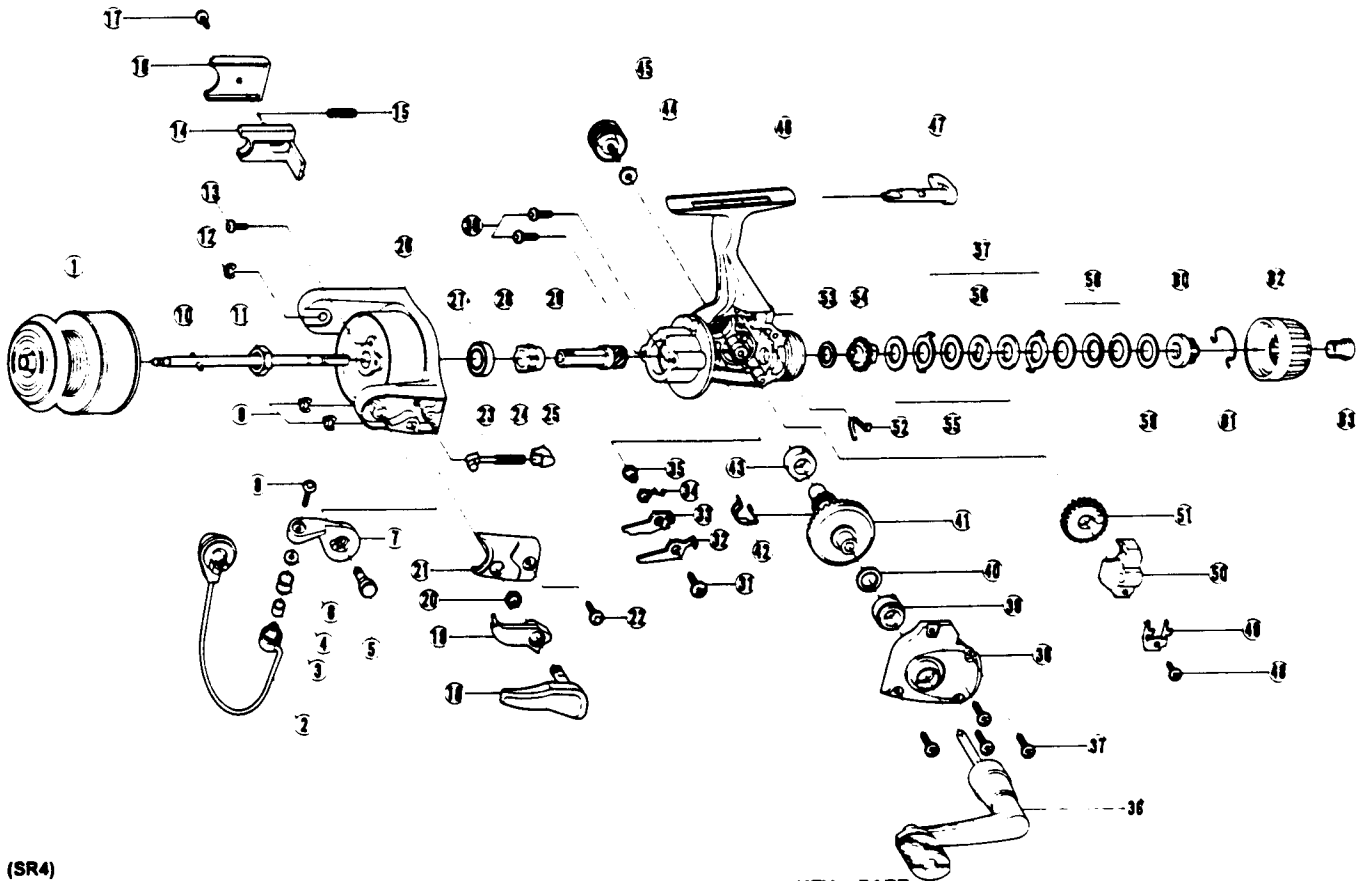


QUANTUM SR 4



(SR4)

KEY NO.	PART NO.	DESCRIPTION	PRICE	KEY NO.	PART NO.	DESCRIPTION	PRICE
1	JU321-23	SPOOL ASSY.	11.25	33	JU074-01	ANTI-REVERSE PAWL 'B' ON	.95
2	GU347-07	BAIL ASSY.	4.75	34	JU081-01	ANTI-REVERSE PAWL SPRING	1.00
3	MT016-02	LINE ROLLER BUSHING	.75	35	GU091-02	ANTI-REVERSE PAWL POST	.70
4	MT004-01	LINE ROLLER	1.20	36	GU318-26	HANDLE ASSY.	5.65
5	GU051-05	ARM LEVER PIN	1.00	37	JU057-01	BODY COVER SCREW	.60
6	GU105-07	LINE ROLLER WASHER	.15	38	KU023-07	BODY COVER	2.60
7	JU007-01	ARM LEVER	1.65	39	JU027-01	GEAR SHAFT BUSHING	1.55
8	KQ108-01	LINE SLIDER SCREW	.30	40	GU105-13	ADJUSTMENT WASHER	.62
9	KQ034-01	E-CLIP	.15	41	JU012-01	DRIVE GEAR	3.35
10	JU315-03	MAIN SHAFT ASSY.	1.95	42	JU088-01	SILENT CAM	1.10
11	GU006-02	ROTOR NUT	.80	43	JU027-01	GEAR SHAFT BUSHING	1.55
12	KQ034-01	E-CLIP	.15	44	GU105-01	HANDLE SCREW WASHER	.10
13	GU077-04	ROTOR NUT LOCK SCREW	.15	45	GU073-01	HANDLE SCREW	.60
14	KU019-01	KICK LEVER	1.10	46	KU007-07	BODY	4.05
15	KQ049-01	KICK LEVER SPRING	.25	47	GU090-01	ANTI-REVERSE LEVER	1.45
16	KQ046-01	KICK LEVER COVER	.80	48	JU100-02	OSCILLATOR RETAINER SCREW	.60
17	GU077-02	KICK LEVER COVER SCREW	.15	49	JU078-01	OSCILLATOR SLIDE RETAINER	.30
18	GU115-02	TRIGGER ASSY.	3.50	50	KU025-01	OSCILLATOR SLIDER	1.95
19	GU097-02	TRIGGER LINK ASSY.	1.65	51	KU053-01	OSCILLATOR GEAR	1.95
20	NL096-01	TRIGGER SPRING	.80	52	GU089-01	ANTI-REVERSE LEVER SPRING	.50
21	KU087-01	ARM LEVER SPRING COVER	.80	53	GU105-17	DRAG FRICTION WASHER 'A'	.77
22	GU077-02	ARM LEVER COVER SCREW	.15	54	KU075-01	DRAG CLICK GEAR	1.40
23	QL031-01	ARM LEVER SPRING PIN	.75	55	GU105-18	DRAG DISC	.88
24	KQ049-02	ARM LEVER SPRING	.85	56	JU080-01	DRAG WASHER 'D'	1.00
25	QL020-01	ARM LEVER SPRING HOLDER	.30	57	JU081-01	DRAG WASHER KEYED	1.00
26	KU009-07	ROTOR	4.05	58	JU043-01	DRAG SPRING	1.30
27	AQ028-06	BALL BEARING	1.10	59	GU105-19	DRAG WASHER	.93
28	JU080-01	ANTI-REVERSE RATCHET	2.35	60	JU066-01	DRAG NUT	1.25
29	JU011-01	PINION GEAR	2.30	61	JU083-01	DRAG CLICK SPRING	1.85
30	GU077-07	BEARING SCREW	.60	62	JU032-01	DRAG KNOB	1.50
31	GU077-05	ANTI-REVERSE PAWL SCREW	.15	63	JU101-01	DRAG KNOB SCREW	1.25
32	JU063-01	ANTI-REVERSE PAWL 'A' CNTR	.95				

Prices subject to change without notice. Prices do not include postage and handling.

PLEASE ORDER BY PART NUMBER

Rev. 6/94

Zebco Division Brunswick Corporation, Box 270, Tulsa, OK 74101 USA 918-836-5581

