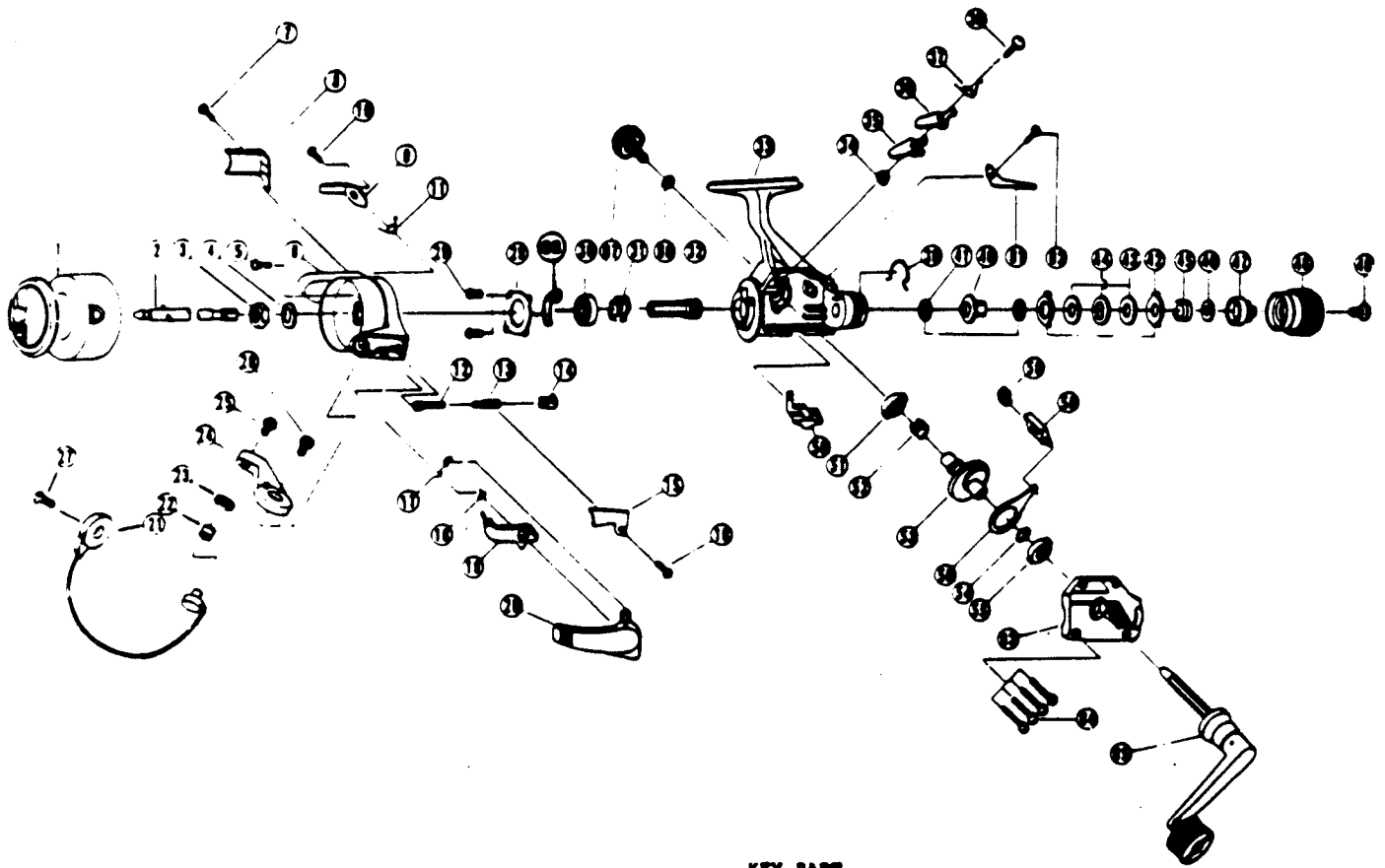


# QUANTUM SS05



KEY PART NO. NO.	DESCRIPTION	PRICE
1 NL321	SPOOL ASSY.	5.46
2 RL315	MAIN SHAFT ASSY.	2.58
3 RLO06	ROTOR NUT	1.29
4 RLO65	ROTOR 'D' WASHER	.62
5 RLO94	ROTOR NUT LOCK SCREW	.62
6 NLO09	ROTOR	3.14
7 RLO85	COVER/CLICK CLAM SCREW	.62
8 RLO24	KICK LEVER COVER	.52
9 RLO19	KICK LEVER	1.13
10 RLO37	KICK LEVER SCREW	.57
11 RLO49	KICK LEVER SPRING	.57
12 RLO31	SPRING SHAFT	.62
13 RLO22	BAIL SPRING	.62
14 RLO20	SPRING HOLDER	.52
15 NLO87	BAIL SPRING COVER	.62
16 NLO85	BAIL SPRING COVER SCREW	.67
17 NLO34	E-CLIP	.67
18 NLO96	TRIP LINK SPRING	.67
19 NLO97	TRIP LINK ASSY.	1.13
20 NL115	TRIP LEVER ASSY.	2.21
21 NL347	BAIL ASSY.	6.28
22 RLO04	LINE ROLLER	1.60
23 RLO17	BAIL COLLAR	1.13
24 NLO07	ARM LEVER	1.13
25 RL108	BAIL SCREW	.62
26 NL107	ARM LEVER SCREW	.67
27 RLO51	BAIL HOLDER SCREW	.62
28 RLO80	BEARING PLATE SCREW	.62
29 RLO40	BEARING PLATE	.62
30 RLO28	BALL BEARING	7.67
31 RLO60	RATCHET GEAR	2.01
32 RLO11	PINION GEAR	5.15
33 NLO01	BODY	6.13
34 RLO91	STOPPER BUSHING	.57

KEY PART NO. NO.	DESCRIPTION	PRICE
35 RLO64	STOPPER 'A'	.57
36 RLO63	STOPPER 'B'	1.13
37 RLO81	STOPPER SPRING	1.13
38 RLO83	STOPPER SCREW	.62
39 RLO33	DRAG CLICK CLAM	1.13
40 RLO75	METAL	1.13
41 RLO38	DRAG 'B' WASHER - 1	.62
42 RLO30	DRAG 'A' WASHER	.62
43 RLO39	DRAG 'B' WASHER - 2	.52
44 RLO66	DRAG 'D' WASHER	.62
45 RLO43	DRAG COIL SPRING	.52
46 RLO46	DRAG ADJUSTING WASHER	.52
47 RLO29	DRAG NUT	.67
48 NLO32	DRAG CAP	2.68
49 RLO79	DRAG CAP SCREW	.57
50 RLO59	STOPPER LEVER	.57
51 RLO13	BODY/BODY COVER BUSHING	.62
52 RLO86	SILENT CAM	.62
53 RLO12	DRIVE GEAR	3.24
54 RLO26	DRIVE GEAR ADJ. WASHER	.52
55 RLO13	BODY/BODY COVER BUSHING	.62
56 RLO25	O/S SLIDER	1.55
58 RLO81	SLIDER PIN	1.13
61 RLO68	CLICK CLAM	.62
62 RLO85	COVER/CLICK CLAM SCREW	.62
63 NLO23	BODY COVER	2.99
64 RLO57	BODY COVER SCREW	.62
65 NL318	HANDLE ASSY.	5.15
66 RLO76	HANDLE SCREW CAP WASHER	.52
67 NLO73	HANDLE SCREW CAP	1.29
68 RLO82	KICK LEVER GUIDE	.88

Prices subject to change without notice. Prices do not include postage and handling.

**PLEASE ORDER BY PART NUMBER**

Rev. 11/90

Zebco Division Brunswick Corporation, Box 270, Tulsa, OK 74101 USA 918-638-6661

