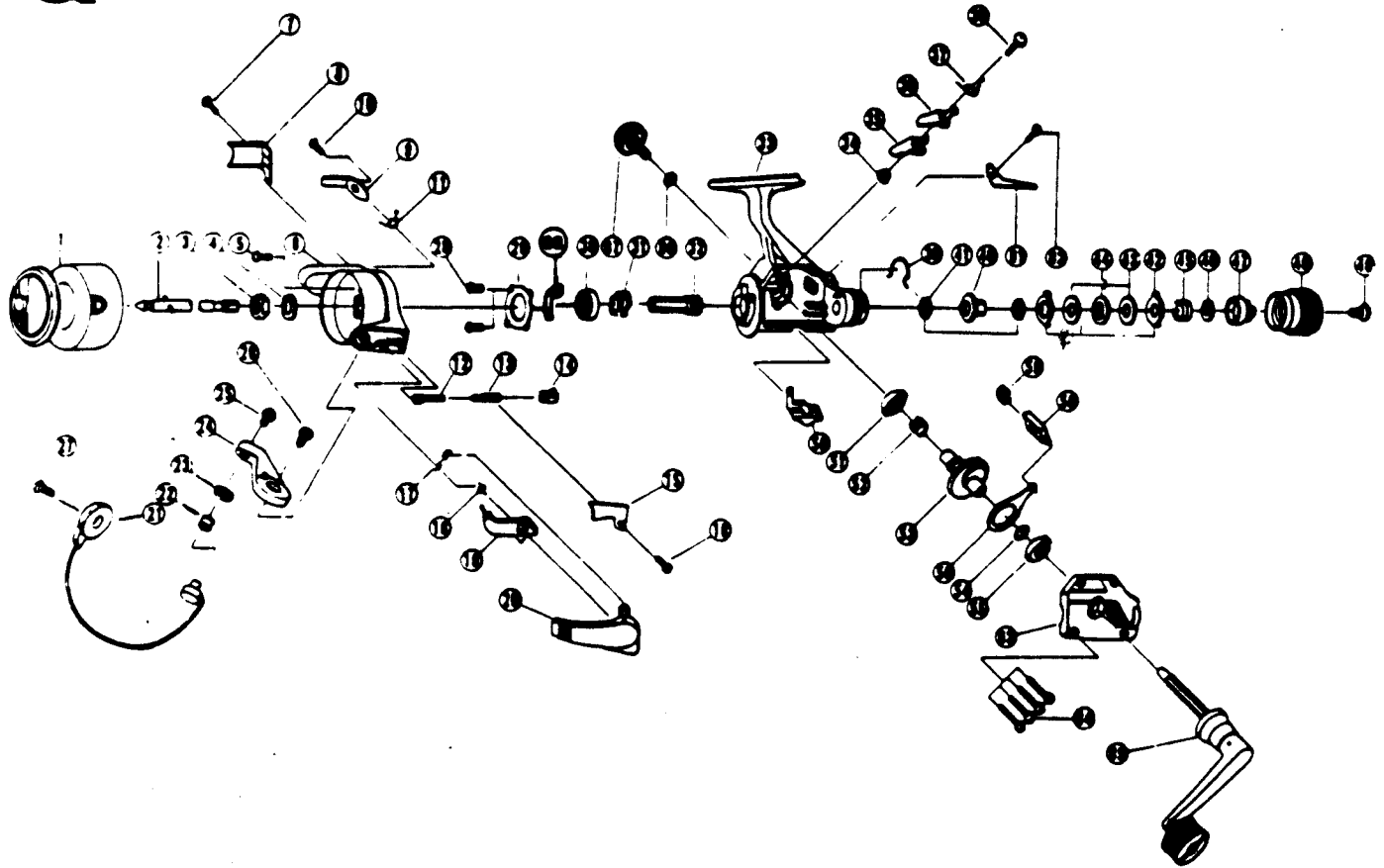


# QUANTUM SS20



KEY PART NO. NO.	DESCRIPTION	PRICE	KEY PART NO. NO.	DESCRIPTION	PRICE
1	PL321 SPOOL ASST.	5.46	35	RL064 STOPPER 'A'	.57
2	SL315 MAIN SHAFT ASST.	2.83	36	RL063 STOPPER 'B'	1.13
3	RL006 ROTOR NUT	1.29	37	RL061 STOPPER SPRING	1.13
4	RL065 ROTOR 'D' WASHER	.62	38	RL083 STOPPER SCREW	.62
5	RL094 ROTOR NUT LOCK SCREW	.62	39	SL033 DRAG CLICK CLAM	1.13
6	PL009 ROTOR	3.19	40	RL075 METAL	1.13
7	RL085 COVER/CLICK CLAM SCREW	.62	41	SL038 DRAG 'B' WASHER - 1	.62
8	SL024 KICK LEVER COVER	.52	42	RL030 DRAG 'A' WASHER	.62
9	SL019 KICK LEVER	1.13	43	SL039 DRAG 'B' WASHER - 2	.62
10	RL037 KICK LEVER SCREW	.57	44	RL066 DRAG 'D' WASHER	.62
11	RL049 KICK LEVER SPRING	.57	45	RL043 DRAG COIL SPRING	.52
12	RL031 SPRING SHAFT	.62	46	RL046 DRAG ADJUSTING WASHER	.52
13	RL022 BAIL SPRING	.62	47	RL029 DRAG NUT	.67
14	RL020 SPRING HOLDER	.52	48	PL032 DRAG CAP	3.04
15	PL087 BAIL SPRING COVER	.62	49	RL079 DRAG CAP SCREW	.57
16	RL088 BAIL SPRING COVER SCREW	.67	50	RL059 STOPPER LEVER	.57
17	RL034 E-CLIP	.67	51	RL013 BODY/BODY COVER BUSHING	.62
18	RL096 TRIP LINE SPRING	.67	52	RL066 SILENT CAM	.62
19	RL097 TRIP LINE ASST.	1.13	53	SL012 DRIVE GEAR	3.24
20	RL115 TRIP LEVER ASST.	2.21	54	RL026 DRIVE GEAR ADJ. WASHER	.52
21	PL347 BAIL ASST.	6.28	55	RL013 BODY/BODY COVER BUSHING	.62
22	SL004 LINE ROLLER	2.06	56	SL025 O/S SLIDER	1.75
23	SL017 BAIL COLLAR	1.13	58	SL081 PIN SLIDER	1.13
24	PL007 ARM LEVER	1.13	59	SL078 SLIDER STOPPER	1.03
25	SL108 BAIL SCREW	.62	61	RL060 CLICK CLAM	.62
26	RL107 ARM LEVER SCREW	.67	62	RL085 COVER/CLICK CLAM SCREW	.62
27	RL051 BAIL HOLDER SCREW	.62	63	PL023 BODY COVER	2.99
28	SL080 BEARING PLATE SCREW	.62	64	SL057 BODY COVER SCREW	.62
29	RL040 BEARING PLATE	.62	65	SL318 HANDLE ASST.	7.21
30	RL028 BALL BEARING	7.67	66	SL076 HANDLE SCREW CAP WASHER	.52
31	RL060 RATCHET GEAR	2.01	67	PL073 HANDLE SCREW CAP	1.60
32	SL011 PINION GEAR	6.28	68	RL082 KICK LEVER GUIDE	.88
33	PL001 BODY	6.18			
34	RL091 STOPPER BUSHING	.57			

Prices subject to change without notice. Prices do not include postage and handling.

**PLEASE ORDER BY PART NUMBER**

Rev. 11/90

Zebco Division Brunswick Corporation, Box 270, Tulsa, OK 74101 USA 818-638-6681