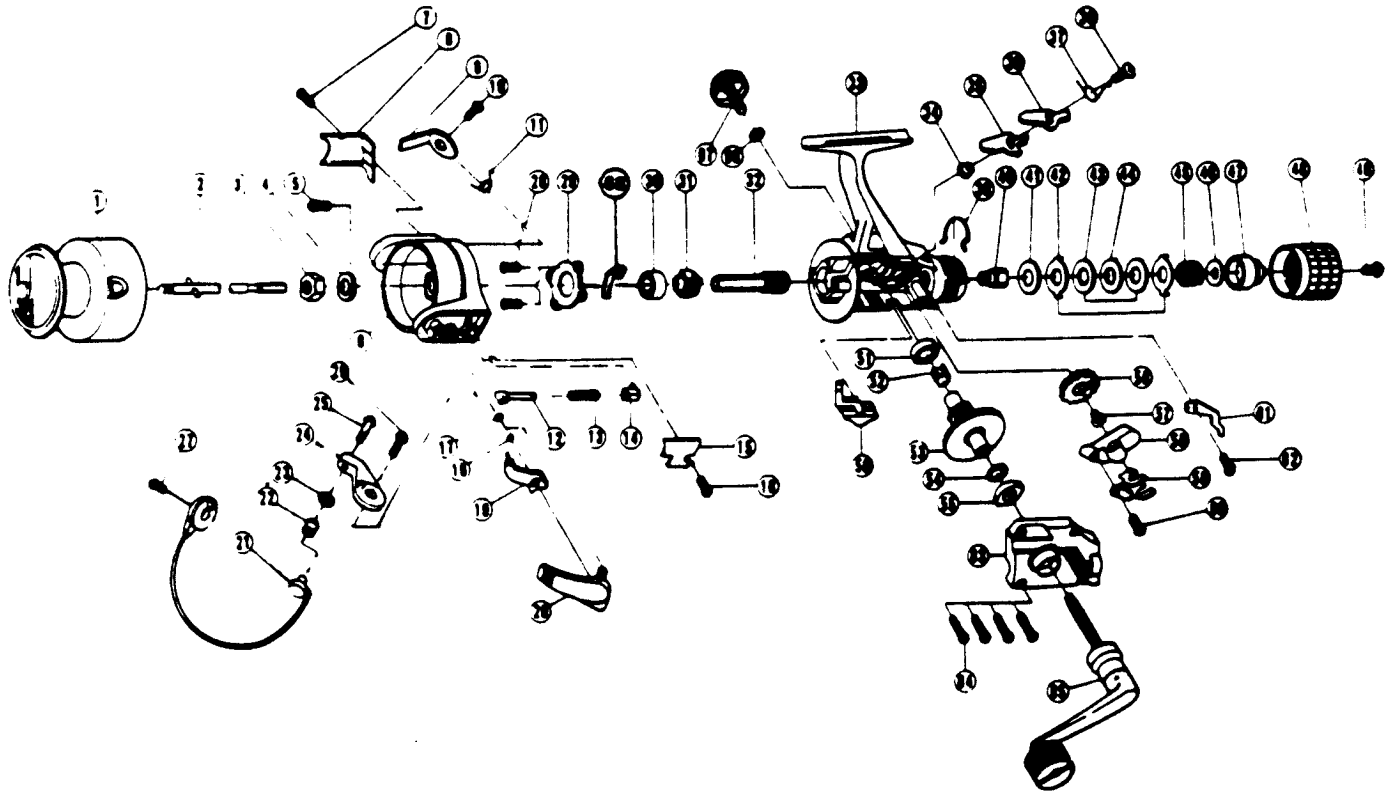


# QUANTUM SS40



KEY PART NO. NO.	DESCRIPTION	PRICE
1 QL321	SPOOL ASSY.	6.08
2 TL315	MAIN SHAFT ASSY.	3.09
3 TLO06	ROTOR NUT	1.49
4 TLO65	ROTOR RETAINER WASHER	.62
5 RLO94	ROTOR NUT LOCK SCREW	.62
6 QLO09	ROTOR	5.41
7 KLO85	COVER/CLICK CLAM SCREW	.62
8 TLO24	KICK LEVER COVER	.62
9 TLO19	KICK LEVER	1.29
10 RLO37	KICK LEVER SCREW	.57
11 TLO49	KICK LEVER SPRING	.57
12 TLO31	SPRING SHAFT	.52
13 TLO22	BAIL SPRING	.62
14 TLO20	SPRING HOLDER	.62
15 QLO87	BAIL SPRING COVER	.62
16 NLO85	BAIL SPRING COVER SCREW	.67
17 NLO34	E-CLIP	.67
18 NLO96	TRIP LINK SPRING	.67
19 NLO97	TRIP LINK ASSY.	1.13
20 NL115	TRIP LEVER ASSY.	2.21
21 QL347	BAIL ASSY.	3.09
22 TLO04	LINE ROLLER	2.06
23 TLO17	BAIL COLLAR	1.13
24 FLO07	ARM LEVER	1.13
25 SL108	BAIL SCREW	.62
26 NL107	ARM LEVER SCREW	.67
27 TLO51	BAIL HOLDER SCREW	.62
28 TLO80	BEARING PLATE SCREW	.62
29 TLO40	BEARING PLATE	.57
30 TLO28	BALL BEARING	7.73
31 TLO60	RATCHET GEAR	2.42
32 TLO11	PINION GEAR	5.25
33 QLO01	BODY	5.67
34 RLO91	STOPPER BUSHING	.57

KEY PART NO. NO.	DESCRIPTION	PRICE
35 TLO64	STOPPER 'A'	1.03
36 TLO63	STOPPER 'B'	1.13
37 TLO61	STOPPER SPRING	.57
38 RLO83	STOPPER SCREW	.67
39 TLO33	DRAG CLICK CLAM	1.11
40 TLO75	METAL	1.60
41 TLO38	DRAG 'B' WASHER - 1	.57
42 TLO30	DRAG 'A' WASHER	.62
43 TLO39	DRAG 'B' WASHER - 2	.62
44 TLO66	DRAG 'D' WASHER	.62
45 TLO43	DRAG COIL SPRING	1.29
46 TLO46	DRAG ADJUSTING WASHER	.62
47 TLO29	DRAG NUT	.57
48 QLO32	DRAG CAP	3.24
49 RLO79	DRAG CAP SCREW	.57
50 TLO59	STOPPER LEVER	.57
51 RLO13	BODY/BODY COVER BUSHING	.62
52 TLO86	SILENT CAM	.62
53 TLO12	DRIVE GEAR	2.06
54 RLO26	DRIVE GEAR ADJ. WASHER	.52
55 RLO13	BODY/BODY COVER BUSHING	.62
56 TLO93	O/S PLATE GEAR	1.03
58 TLO81	O/S SLIDER	1.49
59 TLO78	SLIDER STOPPER	1.03
60 TL161	SLIDER STOPPER SCREW	.52
61 TLO68	CLICK CLAM	.62
62 RLO85	COVER/CLICK CLAM SCREW	.62
63 QLO23	BODY COVER	2.99
64 SLO57	BODY COVER SCREW	.62
65 QL318	HANDLE ASSY.	7.73
66 SLO76	HANDLE SCREW CAP WASHER	.52
67 FLO73	HANDLE SCREW CAP	1.60
68 TLO82	KICK LEVER GUIDE	1.08

Prices subject to change without notice. Prices do not include postage and handling.

**PLEASE ORDER BY PART NUMBER**

Rev. 11/90

Zebco Division Brunswick Corporation, Box 270, Tulsa, OK 74101 USA 918-636-6681