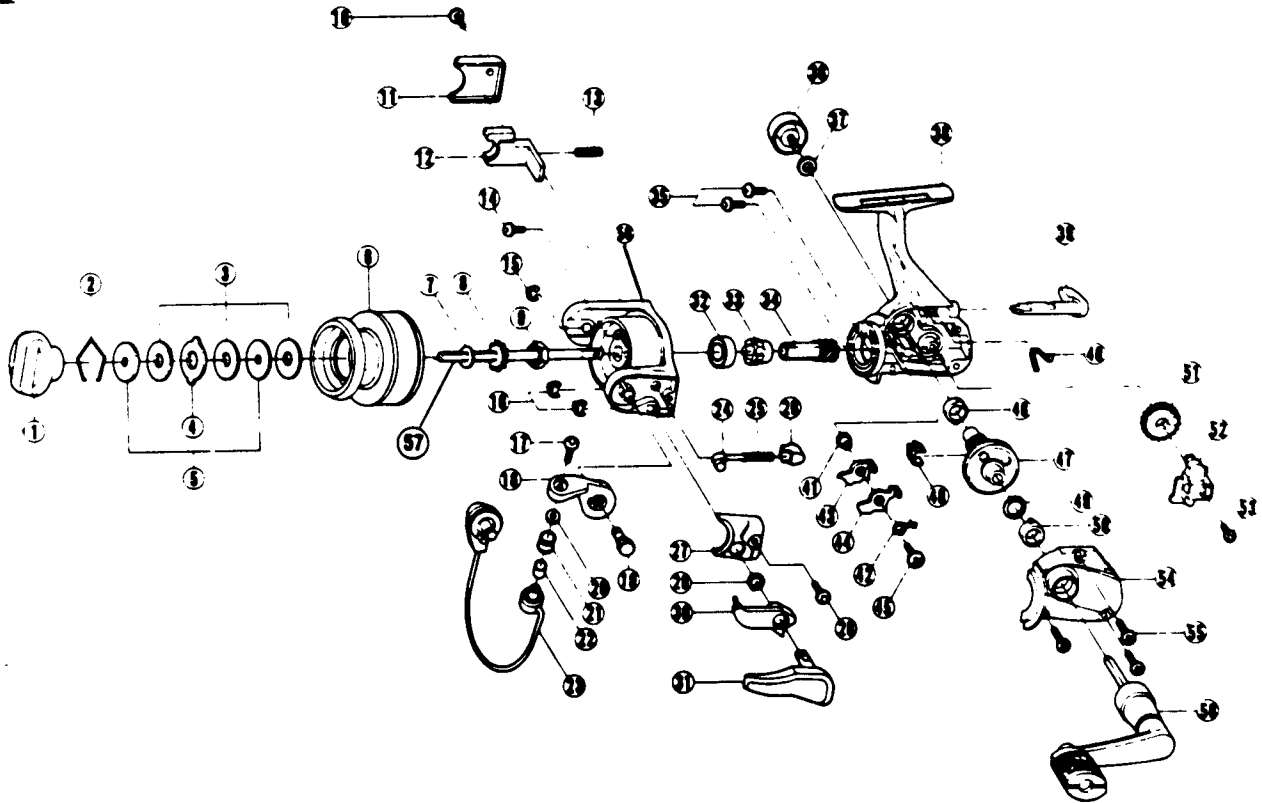


QUANTUM⁵ SSC 1



(SS1C)

KEY NO.	PART NO.	DESCRIPTION	PRICE	KEY NO.	PART NO.	DESCRIPTION	PRICE
1	GU332-04	DRAG KNOB ASSEMBLY	2.63	30	GU097-03	TRIGGER LINK ASSEMBLY	1.65
2	GU038-01	DRAG RETAINER	.25	31	GU115-03	TRIGGER ASSEMBLY	3.50
3	GU105-05	DRAG DISC	.65	32	AQ028-01	BALL BEARING	6.55
4	GU081-01	DRAG KEY WASHER	.50	33	GU060-01	RATCHET GEAR	2.00
5	GU080-01	DRAG D WASHER	.50	34	GU011-01	PINION GEAR	1.60
6	XU321-04	SPOOL ASSEMBLY	8.00	35	GU077-01	BEARING SCREW	.15
7	GU105-06	SPOOL ADJUSTMENT WASHER	.35	36	GU073-05	HANDLE SCREW CAP	1.10
8	GU037-01	CLICK GEAR	.50	37	GU105-01	HANDLE CAP WASHER	.10
9	GU006-01	ROTOR NUT	.30	38	GU001-12	BODY	3.00
10	GU077-03	KICK LEVER COVER SCREW	.60	39	GU090-03	ANTIREVERSE STOPPER LEVER	2.30
11	JU046-02	KICK LEVER COVER	.65	40	GU089-01	ANTIREVERSE LEVER SPRING	.50
12	GU019-01	KICK LEVER	.40	41	GU091-01	ANTIREVERSE PAWL POST	.25
13	KQ049-01	KICK LEVER SPRING	.25	42	GU061-01	ANTIREVERSE PAWL SPRING	.35
14	GU077-04	ROTOR NUT LOCK SCREW	.15	43	GU063-01	ANTIREVERSE PAWL "A"	.45
15	KQ034-01	E-CLIP	.15	44	GU074-01	ANTIREVERSE PAWL "B"	.45
16	KQ034-01	E-CLIP	.15	45	GU077-05	ANTIREVERSE PAWL SCREW	.15
17	KQ108-01	LINE SLIDER SCREW	.30	46	GU027-01	GEAR SHAFT BUSHING	.80
18	GU007-02	ARM LEVER	1.05	47	GU012-01	DRIVE GEAR	2.80
19	GU051-10	ARM LEVER PIN	1.55	48	GU086-01	SILENT CAM	.40
20	GU105-07	LAIN ROLLER WASHER	.15	49	GU105-08	DRIVE GEAR ADJ. WASHER	.45
21	MT004-01	LINE ROLLER	1.20	50	GU027-01	BODY COVER BUSHING	.80
22	MT016-02	LINE ROLLER BUSHING	.75	51	GU053-01	OSCILLATOR GEAR	.85
23	GU347-10	BAIL ASSEMBLY	5.55	52	GU025-01	OSCILLATOR SLIDER	.85
24	KQ031-01	ARM LEVER SPRING PIN	.25	53	GU100-01	MAIN SHAFT SCREW	.15
25	KQ049-03	ARM LEVER SPRING	.35	54	GU023-12	BODY COVER	1.65
26	QL020-01	ARM LEVER SPRING HOLDER	.30	55	GU057-02	BODY COVER SCREW	.77
27	GU087-02	ARM LEVER SPRING COVER	.65	56	GU318-13	HANDLE ASSEMBLY	7.00
28	GU077-03	ARM LEVER COVER SCREW	.60	57	GU015-01	MAIN SHAFT	.85
29	NL096-01	TRIGGER SPRING	.80	58	GU009-09	ROTOR	2.60

Prices subject to change without notice. Prices do not include postage and handling.

PLEASE ORDER BY PART NUMBER

Rev. 6/94

Zebco Division Brunswick Corporation, Box 270, Tulsa, OK 74101 USA 918-836-5581



BRUNSWICK