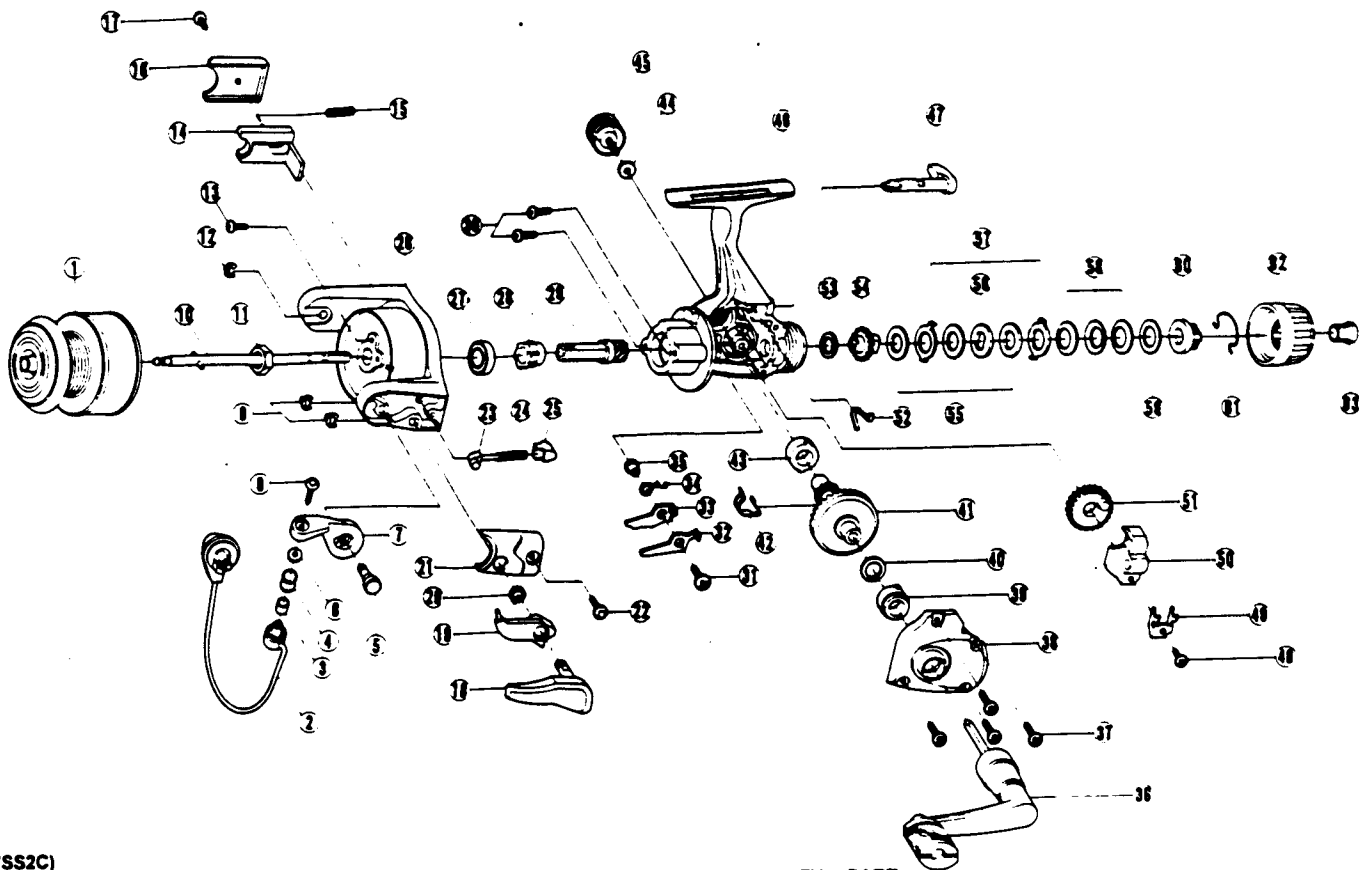


# QUANTUM SSC 2



(SS2C)

| KEY NO. | PART NO.  | DESCRIPTION                | PRICE | KEY NO. | PART NO. | DESCRIPTION               | PRICE |
|---------|-----------|----------------------------|-------|---------|----------|---------------------------|-------|
| 1       | JU321-011 | SPOOL ASSY.                | 8.00  | 33      | GU074-01 | ANTI-REVERSE PAWL 'B' ON  | .45   |
| 2       | GU347-11  | BAIL ASSY.                 | 5.60  | 34      | GU061-01 | ANTI-REVERSE PAWL SPRING  | .35   |
| 3       | MT016-02  | LINE ROLLER BUSHING        | .75   | 35      | GU091-01 | ANTI-REVERSE PAWL POST    | .25   |
| 4       | MT004-01  | LINE ROLLER                | 1.20  | 36      | GU318-19 | HANDLE ASSY.              | 4.70  |
| 5       | GU057-08  | ARM LEVER PIN              | .72   | 37      | GU057-02 | BODY COVER SCREW          | .77   |
| 6       | GU105-07  | LINE ROLLER WASHER         | .15   | 38      | HU023-05 | BODY COVER                | 3.10  |
| 7       | JU007-02  | ARM LEVER                  | 1.65  | 39      | GU027-01 | BODY COVER BUSHING        | .80   |
| 8       | KQ108-03  | LINE SLIDER SCREW          | .85   | 40      | GU105-08 | ADJUSTMENT WASHER         | .15   |
| 9       | KQ034-01  | E-CLIP                     | .15   | 41      | GU012-01 | DRIVE GEAR                | 2.80  |
| 10      | JU315-02  | MAIN SHAFT ASSY.           | 1.00  | 42      | GU086-01 | SILENT CAM                | .40   |
| 11      | GU006-01  | ROTOR NUT                  | .30   | 43      | GU027-01 | GEAR SHAFT BUSHING        | .80   |
| 12      | KQ034-01  | E-CLIP                     | .15   | 44      | GU105-01 | HANDLE SCREW WASHER       | .10   |
| 13      | GU077-01  | ROTOR NUT LOCK SCREW       | .15   | 45      | GU073-05 | HANDLE SCREW              | 1.10  |
| 14      | HU019-01  | KICK LEVER                 | .50   | 46      | HU001-05 | BODY                      | 3.90  |
| 15      | KQ049-04  | KICK LEVER SPRING          | .30   | 47      | GU090-03 | ANTI-REVERSE LEVER        | 2.30  |
| 16      | HU046-02  | KICK LEVER COVER           | .70   | 48      | JU100-01 | OSCILLATOR RETAINER SCREW | .25   |
| 17      | GU077-03  | KICK LEVER COVER SCREW     | .60   | 49      | HU078-01 | OSCILLATOR SLIDE RETAINER | .25   |
| 18      | GU115-04  | TRIGGER ASSY.              | 3.50  | 50      | HU025-01 | OSCILLATOR SLIDER         | 1.00  |
| 19      | GU097-04  | TRIGGER LINK ASSY.         | 1.65  | 51      | HU053-01 | OSCILLATOR GEAR           | 1.00  |
| 20      | NL096-01  | TRIGGER SPRING             | .80   | 52      | GU089-01 | ANTI-REVERSE LEVER SPRING | .50   |
| 21      | HU087-02  | ARM LEVER SPRING COVER     | .65   | 53      | GU105-22 | DRAG FRICTION WASHER 'A'  | .88   |
| 22      | GU077-03  | ARM LEVER COVER SCREW      | .60   | 54      | HU075-01 | DRAG CLICK GEAR           | .60   |
| 23      | NL031-01  | ARM LEVER SPRING PIN       | .25   | 55      | GU105-23 | DRAG WASHER 'B'           | .88   |
| 24      | KQ049-03  | ARM LEVER SPRING           | .35   | 56      | HU080-01 | DRAG WASHER 'D'           | .50   |
| 25      | QL020-01  | ARM LEVER SPRING HOLDER    | .30   | 57      | HU081-01 | DRAG WASHER KEYED         | .50   |
| 26      | HU009-05  | ROTOR                      | 3.35  | 58      | HU043-01 | DRAG SPRING               | .65   |
| 27      | AQ028-01  | BALL BEARING               | 6.55  | 59      | GU105-24 | DRAG WASHER               | .88   |
| 28      | PL060-01  | ANTI-REVERSE RATCHET       | 2.00  | 60      | HU066-01 | DRAG NUT                  | .60   |
| 29      | GU011-02  | PINION                     | 1.95  | 61      | HU070-01 | DRAG RETAINER CLIP        | 1.10  |
| 30      | GU077-01  | BEARING SCREW              | .15   | 62      | HU032-03 | DRAG KNOB                 | 1.40  |
| 31      | GU077-05  | ANTI-REVERSE PAWL SCREW    | .15   | 63      | HU101-02 | DRAG KNOB SCREW           | 1.15  |
| 32      | GU063-01  | ANTI-REVERSE PAWL 'A' CNTR | .45   |         |          |                           |       |

Prices subject to change without notice. Prices do not include postage and handling.

**PLEASE ORDER BY PART NUMBER**

Rev. 6/94

Zebco Division Brunswick Corporation, Box 270, Tulsa, OK 74101 USA 918-836-5581

