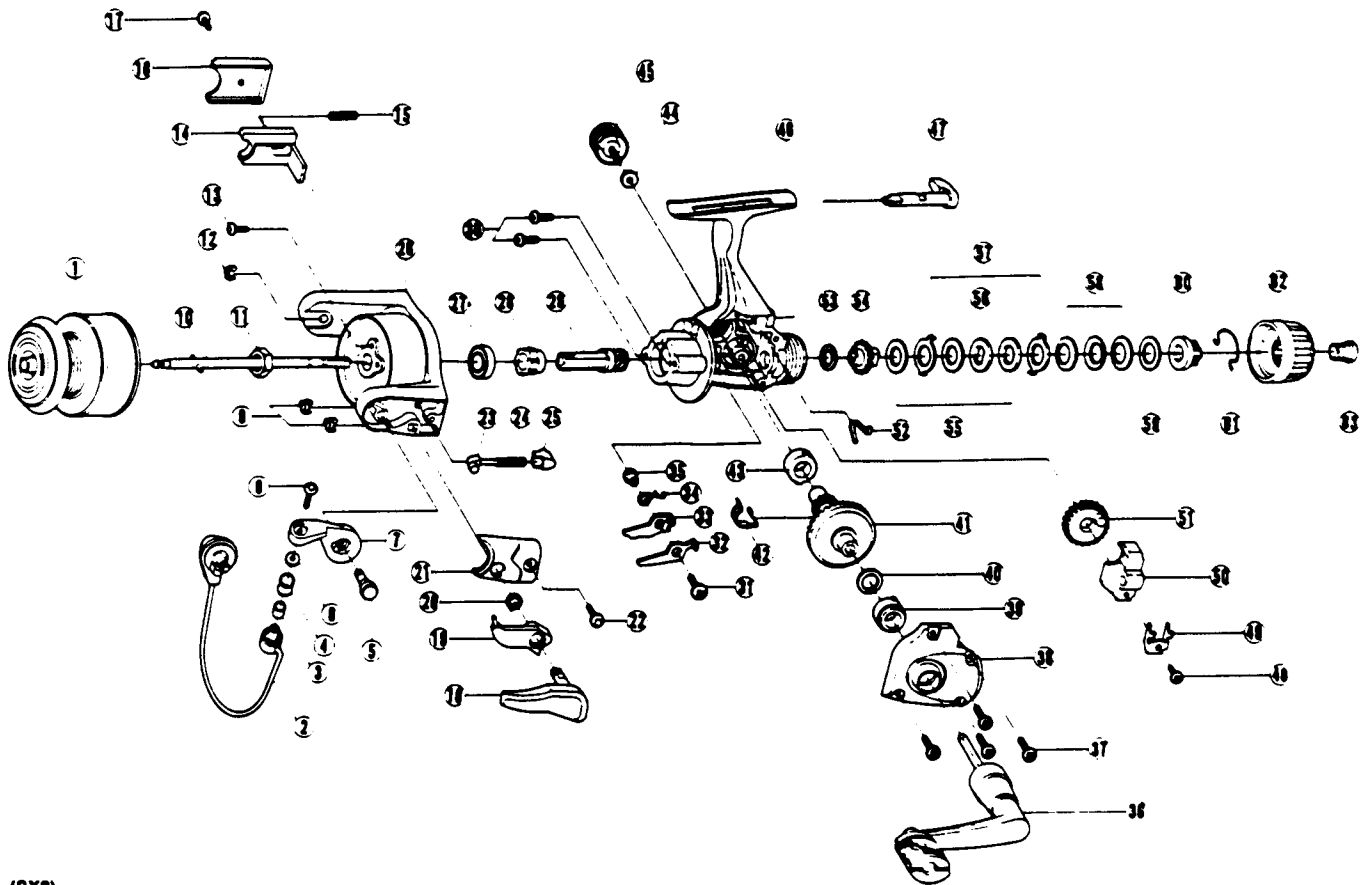


QUANTUM[®] SX 2



(SX2)

KEY NO.	PART NO.	DESCRIPTION	PRICE	KEY NO.	PART NO.	DESCRIPTION	PRICE
1	JU321-010	SPOOL ASSEMBLY	8.55	33	GU074-01	ANTI REVERSE PAWL "B" ON	.45
2	GU347-21	BAIL ASSEMBLY	5.48	34	GU081-01	ANTI REVERSE PAWL SPRING	.35
4	EQ004-01	LINE ROLLER BEARING	7.73	35	GU091-01	ANTI REVERSE PAWL POST	.25
5	GU051-03	ARM LEVER PIN	1.00	36	NU318-01	HANDLE ASSEMBLY (BALANCED)	2.09
6	EQ017-01	BAIL COLLAR	1.49	37	GU057-01	BODY COVER SCREW	.15
7	HU007-01	ARM LEVER	1.65	38	HU023-04	BODY COVER	2.00
8	KQ108-01	LINE SLIDER SCREW	.30	39	GU157-01	GEAR SHAFT BEARING	6.55
9	KQ034-01	E-CLIP	.15	40	GU105-08	ADJUSTMENT WASHER	.15
10	JU315-02	MAIN SHAFT ASSEMBLY	1.00	41	GU012-01	DRIVE GEAR	2.80
11	GU006-01	ROTOR NUT	.30	42	GU086-01	SILENT CAM	.40
12	KQ034-01	E-CLIP	.15	43	GU157-01	GEAR SHAFT BEARING	6.55
13	GU077-01	ROTOR NUT LOCK SCREW	.15	44	GU105-01	HANDLE SCREW WASHER	.10
14	HU019-01	KICK LEVER	.50	45	GU073-01	HANDLE SCREW	.60
15	KQ049-04	KICK LEVER SPRING	.30	46	HU001-04	BODY	3.60
16	HU046-01	KICK LEVER COVER	.25	47	GU090-01	ANTI REVERSE LEVER	1.45
17	GU077-02	KICK LEVER COVER SCREW	.15	48	JU100-01	OSCILLATOR RETAINER SCREW	.25
18	GU115-02	TRIGGER ASSEMBLY	.15	49	HU078-01	OSCILLATOR SLIDE RETAINER	.25
19	GU097-02	TRIGGER LINK ASSEMBLY	3.50	50	HU025-01	OSCILLATOR SLIDER	1.00
20	NL096-01	TRIGGER SPRING	1.65	51	HU053-01	OSCILLATOR GEAR	1.00
21	HU087-01	ARM LEVER SPRING COVER	.65	52	GU089-01	ANTI REVERSE LEVER SPRING	.50
22	GU077-02	ARM LEVER COVER SCREW	.15	53	GU105-22	DRAG FRICTION WASHER "A"	.88
23	NL031-01	ARM LEVER SPRING PIN	.25	54	KU075-01	DRAG CLICK GEAR	1.40
24	KQ049-03	ARM LEVER SPRING	.35	55	GU105-23	DRAG WASHER "B"	.88
25	QL020-01	ARM LEVER SPRING HOLDER	.30	56	HU080-01	DRAG WASHER "D"	.50
26	HU009-04	ROTOR	3.15	57	HU081-01	DRAG WASHER KEYED	.50
27	AQ028-01	BALL BEARING	6.55	58	HU043-01	DRAG SPRING	.65
28	PL060-01	ANTI REVERSE RATCHET	2.00	59	GU105-24	DRAG WASHER	.88
29	GU011-02	PINION	1.95	60	HU066-01	DRAG NUT	.60
30	GU077-01	BEARING SCREW	.15	61	HU070-01	DRAG RETAINER CLIP	1.10
31	GU077-05	ANTI REVERSE PAWL SCREW	.15	62	HU032-01	DRAG KNOB	.75
32	GU063-01	ANTI REVERSE PAWL "A" CNTR	.45	63	HU101-01	DRAG KNOB SCREW	.60

Prices subject to change without notice. Prices do not include postage and handling.

PLEASE ORDER BY PART NUMBER

Rev. 6/94

Zebco Division Brunswick Corporation, Box 270, Tulsa, OK 74101 USA 918-836-5581

