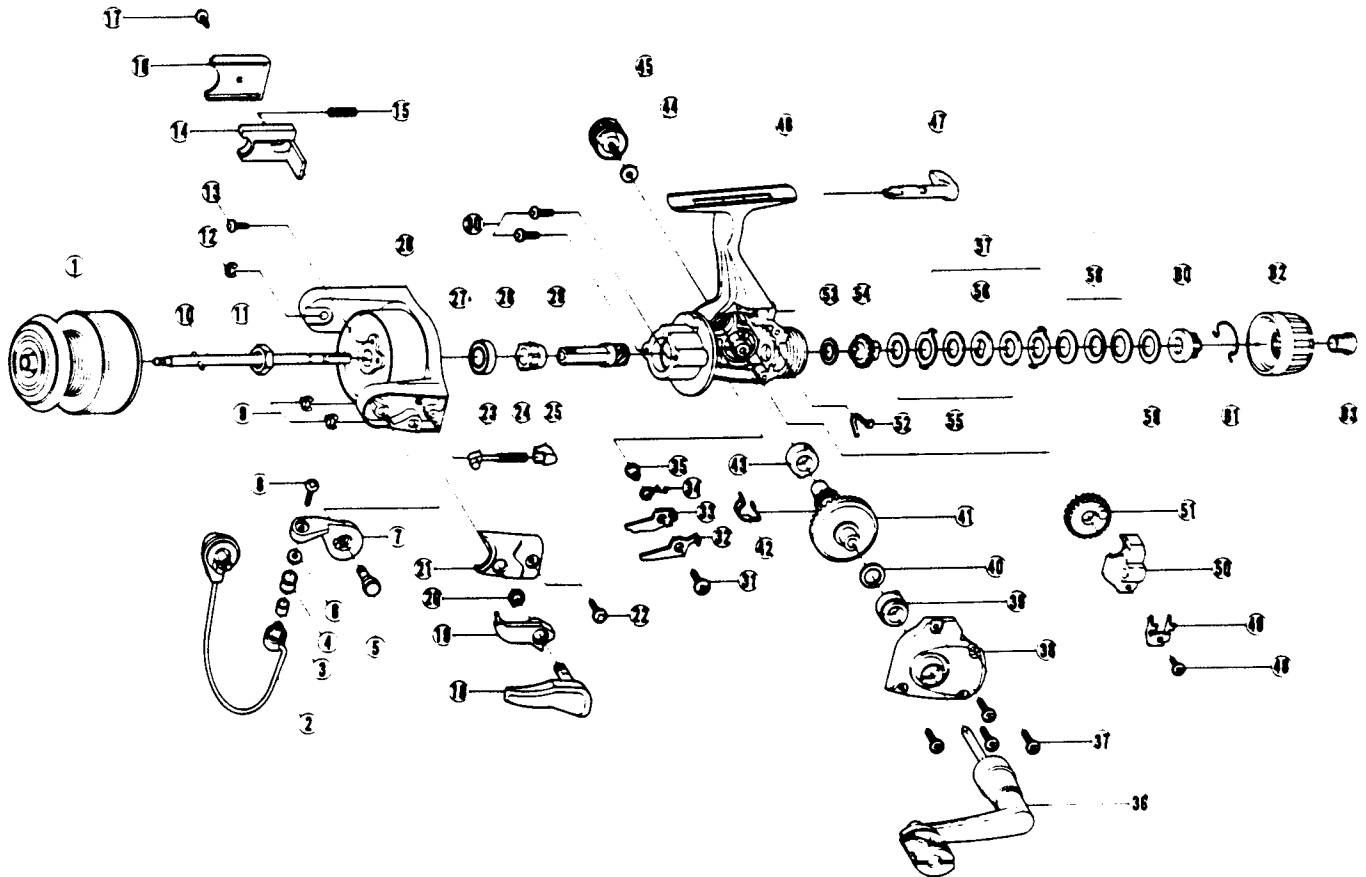


QUANTUM SX 3



(SX3)

KEY NO.	PART NO.	DESCRIPTION	PRICE	KEY NO.	PART NO.	DESCRIPTION	PRICE
1	JU321-15	SPOOL ASSEMBLY	8.55	33	JU074-01	ANTIREVERSE PAWL "B" ON	.95
2	GU347-12	BAIL ASSEMBLY	5.50	34	JU061-01	ANTIREVERSE PAWL SPRING	1.00
4	EQ004-01	LINE ROLLER BEARING	7.73	35	GU091-02	ANTIREVERSE PAWL POST	.70
5	GU051-03	ARM LEVER PIN	1.00	36	NU318-03	HANDLE ASSEMBLY (BALANCED)	5.40
6	EQ017-01	BAIL COLLAR	1.49	37	GU057-01	BODY COVER SCREW	.15
7	HU007-01	ARM LEVER	1.65	38	JU023-04	BODY COVER	2.60
8	KQ108-01	LINE SLIDER SCREW	.30	39	AQ128-02	GEAR SHAFT BEARING	6.10
9	KQ034-01	E-CLIP	.15	40	GU105-13	ADJUSTMENT WASHER	.62
10	JU315-01	MAIN SHAFT ASSEMBLY	1.75	41	JU012-01	DRIVE GEAR	3.35
11	GU006-02	ROTOR NUT	.80	42	GU086-01	SILENT CAM	.40
12	KQ034-01	E-CLIP	.15	43	AQ128-02	GEAR SHAFT BEARING	6.10
13	GU077-04	ROTOR NUT LOCK SCREW	.15	44	GU105-01	HANDLE SCREW WASHER	.10
14	JU019-01	KICK LEVER	1.00	45	GU073-01	HANDLE SCREW	.60
15	KQ049-01	KICK LEVER SPRING	.25	46	JU001-04	BODY	10.05
16	JU046-01	KICK LEVER COVER	.75	47	GU090-01	ANTIREVERSE LEVER	1.45
17	GU077-02	KICK LEVER COVER SCREW	.15	48	JU100-01	OSCILLATOR RETAINER SCREW	.25
18	GU115-02	TRIGGER ASSEMBLY	3.50	49	JU078-01	OSCILLATOR SLIDE RETAINER	.30
19	GU097-02	TRIGGER LINK ASSEMBLY	1.65	50	JU025-01	OSCILLATOR SLIDER	1.75
20	NL096-01	TRIGGER SPRING	.80	51	JU053-01	OSCILLATOR GEAR	1.75
21	JU087-01	ARM LEVER SPRING COVER	.80	52	GU089-01	ANTIREVERSE LEVER SPRING	.50
22	GU077-02	ARM LEVER COVER SCREW	.15	53	GU105-17	DRAG FRICTION WASHER "A"	.27
23	QL031-01	ARM LEVER SPRING PIN	.75	54	JU075-01	DRAG CLICK GEAR	1.25
24	KQ049-02	ARM LEVER SPRING	.88	55	GU105-18	DRAG DISC	.88
25	QL020-01	ARM LEVER SPRING HOLDER	.30	56	JU080-01	DRAG WASHER "D"	1.00
26	JU009-04	ROTOR	3.70	57	JU081-01	DRAG WASHER KEYED	1.00
27	AQ028-06	BALL BEARING	6.10	58	JU043-01	DRAG SPRING	1.00
28	PL060-01	ANTIREVERSE RATCHET	2.00	59	GU105-19	DRAG WASHER	.93
29	JU011-01	PINION GEAR	2.30	60	JU066-01	DRAG NUT	1.25
30	JU077-01	BEARING SCREW	.60	61	JU083-01	DRAG CLICK SPRING	1.85
31	GU077-05	ANTIREVERSE PAWL SCREW	.15	62	JU032-01	DRAG KNOB	1.50
32	GU063-01	ANTIREVERSE PAWL "A" CNTR	.45	63	JU101-01	DRAG KNOB SCREW	1.25

Prices subject to change without notice. Prices do not include postage and handling.

PLEASE ORDER BY PART NUMBER

Rev. 6/94

Zebco Division Brunswick Corporation, Box 270, Tulsa, OK 74101 USA 918-836-5581

