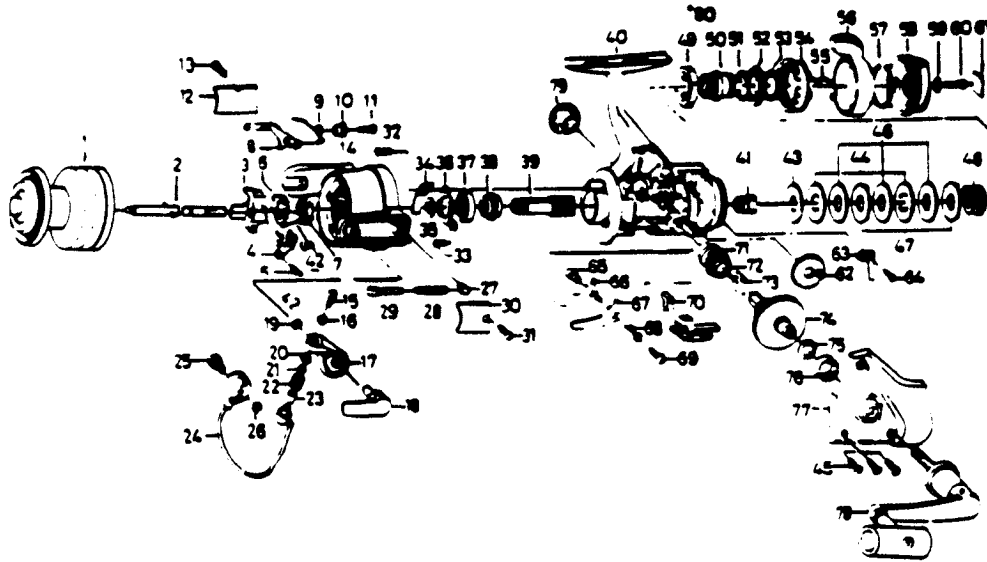


# QUANTUM X4



| KEY PART NO. | NO.     | DESCRIPTION            | PRICE | KEY PART NO. | NO.   | DESCRIPTION            | PRICE |
|--------------|---------|------------------------|-------|--------------|-------|------------------------|-------|
|              | CK321-1 | SPOOL ASSY. EXTRA      | 6.31  | 42           | NT058 | RTR NUT LOCK SCREW     | .85   |
| 1            | CK321   | SPOOL ASSY. (MAIN)     | 6.31  | 43           | NT039 | DRAG WASHER B          | 1.66  |
| 2            | NT315   | MAIN SHAFT             | 3.73  | 44           | NT041 | EARED WASHER           | 1.83  |
| 3            | NT025   | OSCILLATING SLIDER     | 1.83  | 45           | NT057 | SIDE COVER SCREW       | 2.87  |
| 4            | NT083   | OSC. SLIDER RETAINER   | .98   | 46           | NT046 | DRAG WASHER C          | 2.87  |
| 5            | NT161   | OSC. SLIDER SCREW      | .85   | 47           | NT030 | KEY WASHER             | 1.83  |
| 6            | NT088   | ROTOR NUT LOCK WASHER  | 1.43  | 48           | NT031 | DRAG COIL SPRING       | 1.66  |
| 7            | NT006   | ROTOR NUT              | 1.27  | 49           | NT112 | DRAG NUT A             | 3.44  |
| 8            | NT019   | BAIL TRIP LEVER        | 2.24  | 50           | NT121 | DRAG SCREW             | 1.43  |
| 9            | NT049   | BAIL TRIP LEVER SPRING | .85   | 51           | NT106 | DRAG SCREW WASHER A    | .98   |
| 10           | NT137   | BAIL TRIP LV. BUSHING  | 1.09  | 52           | NT110 | DRAG HOLDER            | 1.83  |
| 11           | NT037   | BAIL TRIP LEVER SCREW  | .85   | 53           | NT111 | DRAG SCREW WASHER B    | .98   |
| 12           | NT024   | BAIL TRIP COVER        | 1.09  | 54           | NT117 | DRAG NUT B             | 4.58  |
| 13           | NT085   | BAIL SPG COVER SCRW    | 1.09  | 55           | NT118 | DRAG SPRING            | 1.09  |
| 14           | CK009   | ROTOR                  | 5.16  | 56           | CK094 | POWER LEVER            | 4.53  |
| 15           | NT108   | BAIL SCREW             | 1.27  | 57           | NT095 | POWER LEVER RETAINER   | .46   |
| 16           | NT102   | LOCK WASHER            | .46   | 58           | NT032 | DRAG KNOB              | 3.39  |
| 17           | NT007   | BAIL ARM               | 1.83  | 59           | NT119 | DRAG KNOB WASHER       | .85   |
| 18           | NT115   | CAM CAST LEVER         | 5.68  | 60           | NT079 | DRAG KNOB SCREW        | .85   |
| 19           | NT002   | CAM CAST LV. RETAINER  | .46   | 61           | NT120 | DRAG KNOB NAME PLATE   | 1.27  |
| 20           | NT017   | LINE ROLLER COLLAR     | .46   | 62           | NT053 | OSCILLATING GEAR       | 1.43  |
| 21           | NT015   | LINE ROLLER            | .46   | 63           | NT068 | CLICK LEAF SPRING      | .98   |
| 22           | NT004   | LINE ROLLER            | 1.72  | 64           | NT067 | CLICK LEAF SPRING SCRW | .85   |
| 23           | NT016   | LINE ROLLER BUSHING    | .46   | 65           | NT014 | ANTI-REV. PAWL COLLAR  | .98   |
| 24           | NT347   | BAIL                   | 4.02  | 66           | NT063 | ANTI-REV. PAWL A       | 1.27  |
| 25           | NT044   | BAIL HOLDER PIN        | 1.83  | 67           | NT064 | ANTI-REV. PAWL B       | 1.43  |
| 26           | NT003   | BAIL TRIP CAM RET.     | .85   | 68           | NT061 | ANTI-REV. PAWL SPG A   | .85   |
| 27           | NT020   | BAIL SPG SHAFT HLDR    | .98   | 69           | NT089 | ANTI-REV. PAWL SCREW   | .85   |
| 28           | NT022   | BAIL SPRING            | .46   | 70           | NT059 | ANTI-REV. LEVER        | 1.27  |
| 29           | NT029   | BAIL SPRING SHAFT      | 1.09  | 71           | NT052 | BUSHING                | 2.24  |
| 30           | NT087   | BAIL SPRING COVER      | .98   | 72           | NT253 | OSCILLATING PW GEAR    | 1.66  |
| 31           | NT085   | BAIL SPG COVER SCRW    | 1.09  | 73           | NT086 | ANTI-REV. PAWL SPG B   | .98   |
| 32           | NT080   | BEARING RET. SCREW A   | .98   | 74           | CK012 | DRIVE GEAR             | 5.90  |
| 33           | NT093   | BEARING RET. SCREW B   | .85   | 75           | NT026 | DRIVE GEAR WASHER      | .46   |
| 34           | NT082   | BAIL TRIP PLATE        | 1.43  | 76           | NT157 | BALL BEARING           | 9.12  |
| 35           | NT027   | PINION WASHER          | .85   | 77           | CK323 | SIDE COVER             | 5.90  |
| 36           | NT040   | BEARING RETAINER       | 1.83  | 78           | CK318 | HANDLE ASSY.           | 12.56 |
| 37           | NT028   | BALL BEARING           | 9.12  | 79           | MT073 | HANDLE SCREW CAP       | 2.30  |
| 38           | NT060   | ANTI-REV. RATCHET      | 3.73  | 80           | NT121 | DRAG SCREW             | 1.43  |
| 39           | NT011   | PINION GEAR            | 6.82  |              |       |                        |       |
| 40           | CK301   | BODY                   | 9.46  |              |       |                        |       |
| 41           | NT066   | CLICK GEAR             | 1.83  |              |       |                        |       |

\*Not pictured  
Located between Keys 48 & 50

Prices subject to change without notice. Prices do not include postage and handling.

**PLEASE ORDER BY PART NUMBER**

Rev. 11/80

Zebco Division Brunswick Corporation, Box 278, Tada, OK 74101 USA 016-628-6881

