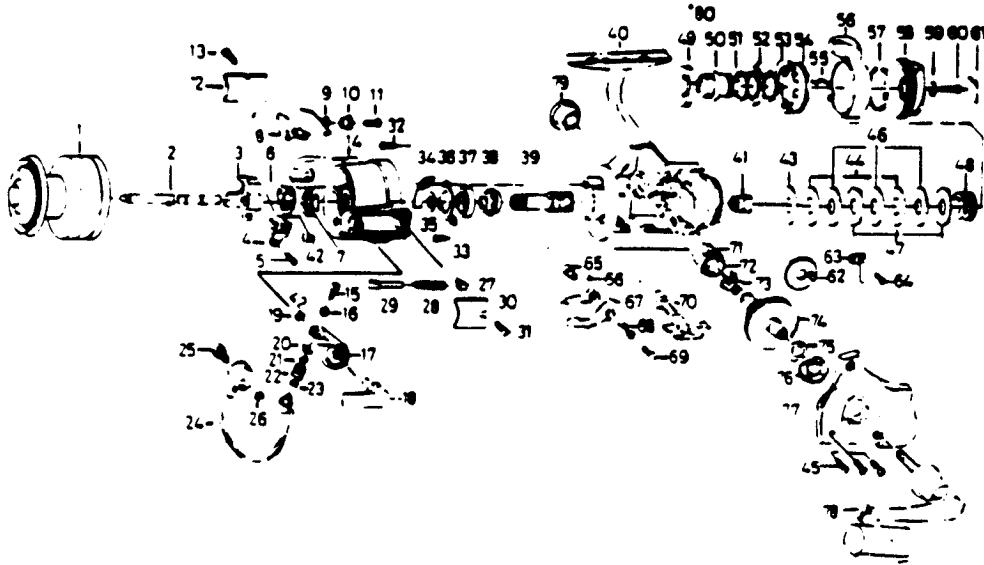


QUANTUM X5



KEY PART NO.	NO.	DESCRIPTION	PRICE	KEY PART NO.	NO.	DESCRIPTION	PRICE
	DK321-1	SPOOL ASSY. (EXTRA)	6.88	42	NT058	RTR NUT LOCK SCREW	.85
1	DK321	SPOOL ASSY. (MAIN)	6.88	43	NT039	DRAG WASHER B	1.66
2	NT315	MAIN SHAFT	3.73	44	NT041	EARED WASHER	1.83
3	NB025	OSCILLATOR SLIDER	1.95	45	NT057	SIDE COVER SCREW	2.87
4	NT083	OSC. SLIDER RETAINER	.98	46	NT046	DRAG WASHER C	2.87
5	NT161	OSC. SLIDER SCREW	.85	47	NT030	KEY WASHER	1.83
6	NT088	ROTOR NUT LOCK WASHER	1.43	48	NT031	DRAG COIL SPRING	1.66
7	NT006	ROTOR NUT	1.27	49	NT112	DRAG NUT A	3.44
8	PT019	BAIL TRIP LEVER	2.24	50	NT121	DRAG SCREW	1.43
9	NT049	BAIL TRIP LEVER SPRING	.85	51	NT106	DRAG SCREW WASHER A	.98
10	NT137	BAIL TRIP LV. BUSHING	1.09	52	NT110	DRAG HOLDER	1.83
11	NT037	BAIL TRIP LEVER SCREW	.85	53	NT111	DRAG SCREW WASHER B	.98
12	NT024	BAIL TRIP COVER	1.09	54	NT117	DRAG NUT B	4.58
13	NT085	BAIL SPG COVER SCRM	1.09	55	NT118	DRAG SPRING	1.09
14	DK009	ROTOR	5.44	56	CK094	POWER LEVER	4.53
15	NT108	BAIL SCREW	1.27	57	NT095	POWER LEVER RETAINER	.46
16	NT102	LOCK WASHER	.46	58	NT032	DRAG KNOB	3.39
17	NT007	BAIL ARM	1.83	59	NT119	DRAG KNOB WASHER	.85
18	NT115	CAM CAST LEVER	5.68	60	NT079	DRAG KNOB SCREW	.85
19	NT002	CAM CAST LV. RETAINER	.46	61	NT120	DRAG KNOB NAME PLATE	1.27
20	NT017	LINE ROLLER COLLAR	.46	62	NT053	OSCILLATING GEAR	1.43
21	NT015	LINE ROLLER	.46	63	NT068	CLICK LEAF SPRING	.98
22	NT004	LINE ROLLER	1.72	64	NT067	CLICK LEAF SPRING SCRM	.85
23	NT016	LINE ROLLER BUSHING	.46	65	NT014	ANTI-REV PAWL COLLAR	.98
24	PT347	BAIL	4.02	66	NT063	ANTI-REV. PAWL A	1.27
25	NT044	BAIL HOLDER PIN	1.83	67	NT064	ANTI-REV. PAWL B	1.43
26	NT003	BAIL TRIP CAM RET.	.85	68	NT061	ANTI-REV PAWL SPG A	.85
27	NT020	BAIL SPG SHAFT ELDR	.98	69	NT089	ANTI-REV PAWL SCREW	.85
28	NT022	BAIL SPRING	.46	70	NT059	ANTI-REV. LEVER	1.27
29	NT029	BAIL SPRING SHAFT	1.09	71	NT052	BUSHING	2.24
30	NT087	BAIL SPRING COVER	.98	72	NT253	OSCILLATING PN GEAR	1.66
31	NT085	BAIL SPG COVER SCRM	1.09	73	NT086	ANTI-REV PAWL SPG B	.98
32	NT080	BEARING RET.SCREW A	.98	74	CK012	DRIVE GEAR	5.90
33	NT093	BEARING RET.SCREW B	.85	75	NT026	DRIVE GEAR WASHER	.46
34	NT082	BAIL TRIP PLATE	1.43	76	NT157	BALL BEARING	9.12
35	NT027	PINION WASHER	.85	77	DK323	SIDE COVER	5.90
36	NT040	BEARING RETAINER	1.83	78	DK318	HANDLE ASSY.	12.56
37	NT028	BALL BEARING	9.12	79	NT073	HANDLE SCREW CAP	2.30
38	NT060	ANTI-REV. RATCHET	3.73	80	NT121	DRAG SCREW	1.43
39	NT011	PINION GEAR	6.82				
40	DK301	BODY	9.46				
41	NT066	CLICK GEAR	1.83				

*Not pictured
Located between Keys 48 & 50

Prices subject to change without notice. Prices do not include postage and handling.
PLEASE ORDER BY PART NUMBER
Rev. 11/80

Zetec Division Brunswick Corporation, Box 270, Tulsa, OK 74101 USA 918-686-8881

