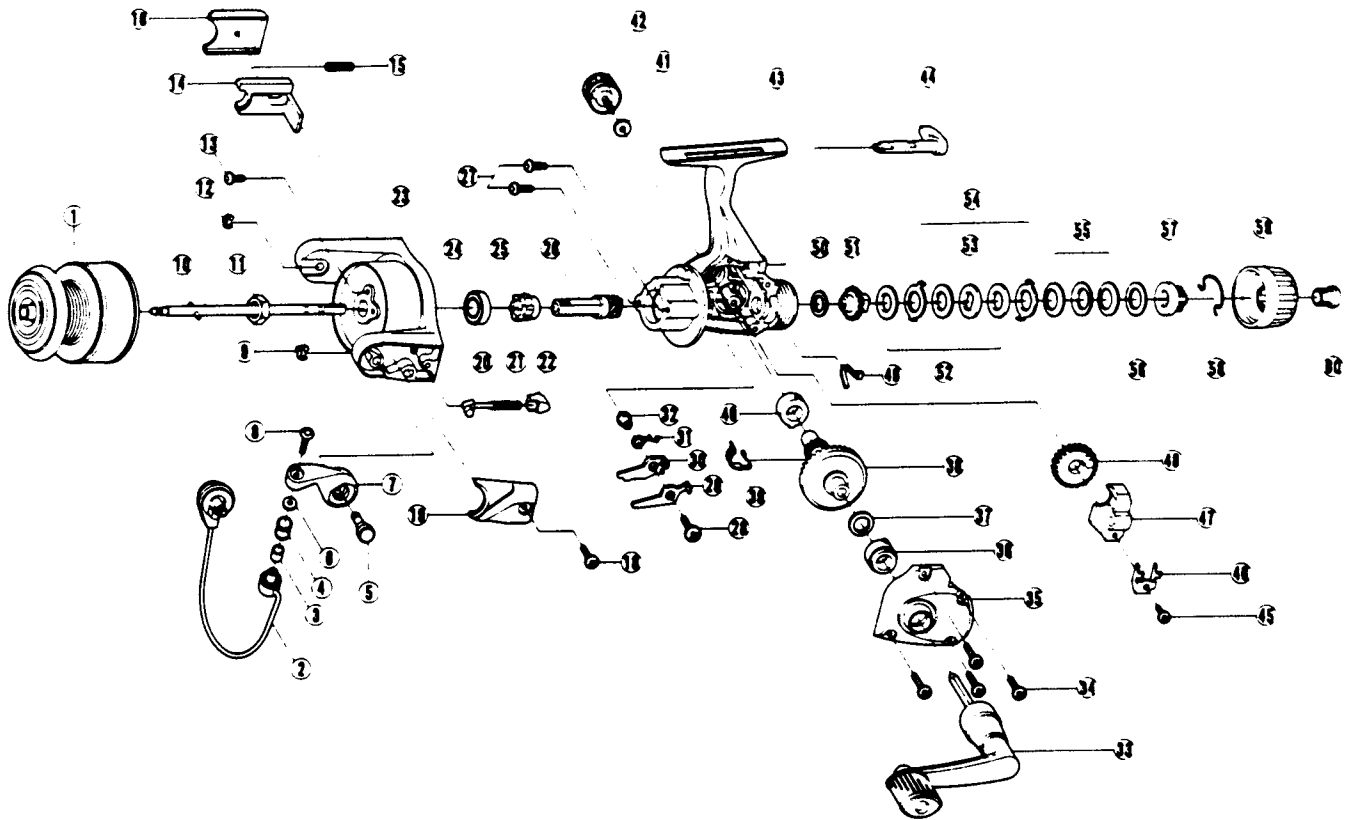


# QUANTUM<sup>5</sup> XR 3

II- Q



(XR3)

KEY NO.	PART NO.	DESCRIPTION	PRICE	KEY NO.	PART NO.	DESCRIPTION	PRICE
1	JU321-17	SPOOL ASSY.	10.15	31	JU061-01	ANTI-REVERSE PAWL SPRING	1.00
2	GU347-04	BAIL ASSY.	5.95	32	GU091-02	ANTI-REVERSE PAWL POST	.70
3	MT016-02	LINE ROLLER BUSHING	.75	33	GU318-22	HANDLE ASSY.	5.15
4	MT004-01	LINE ROLLER	1.20	34	JU057-01	BODY COVER SCREW	.60
5	GU051-04	ARM LEVER PIN	.55	35	JU023-06	BODY COVER	2.35
6	GU105-07	LINE ROLLER WASHER	.15	36	JU027-01	GEAR SHAFT BUSHING	1.55
7	HU007-01	ARM LEVER	1.65	37	GU105-13	ADJUSTMENT WASHER	.62
8	KQ108-01	LINE SLIDER SCREW	.30	38	JU012-01	DRIVE GEAR	3.35
9	KQ034-01	E-CLIP	.15	39	JU086-01	SILENT CAM	1.10
10	JU315-01	MAIN SHAFT ASSY.	1.75	40	JU027-01	GEAR SHAFT BUSHING	1.55
11	GU006-02	ROTOR NUT	.80	41	GU105-01	HANDLE SCREW WASHER	.10
12	KQ034-01	E-CLIP	.15	42	GU073-01	HANDLE SCREW	.60
13	GU077-04	ROTOR NUT LOCK SCREW	.15	43	JU001-06	BODY	10.05
14	JU019-01	KICK LEVER	1.00	44	GU090-01	ANTI-REVERSE LEVER	1.45
15	KQ049-01	KICK LEVER SPRING	.25	45	JU100-01	OSCILLATOR RETAINER SCREW	.25
16	JU046-01	KICK LEVER COVER	.75	46	JU078-01	OSCILLATOR SLIDE RETAINER	.30
17	GU077-02	KICK LEVER COVER SCREW	.15	47	JU025-01	OSCILLATOR SLIDER	1.75
18	GU077-02	ARM LEVER COVER SCREW	.15	48	JU053-01	OSCILLATOR GEAR	1.75
19	NU087-01	ARM LEVER SPRING COVER	.75	49	GU089-01	ANTI-REVERSE LEVER SPRING	.50
20	QL031-01	ARM LEVER SPRING PIN	.75	50	GU105-17	DRAG FRICTION WASHER 'A'	.77
21	KQ049-02	ARM LEVER SPRING	.85	51	JU075-01	DRAG CLICK GEAR	1.25
22	QL020-01	ARM LEVER SPRING HOLDER	.30	52	GU105-18	DRAG DISC	.88
23	JU009-06	ROTOR	3.70	53	JU080-01	DRAG WASHER 'D'	1.00
24	AQ028-06	BALL BEARING	6.10	54	JU081-01	DRAG WASHER KEYED	1.00
25	JU060-01	ANTI-REVERSE RATCHET	2.35	55	JU043-01	DRAG SPRING	1.30
26	JU011-01	PINION GEAR	2.30	56	GU105-19	DRAG WASHER	.93
27	JU077-01	BEARING SCREW	.60	57	JU086-01	DRAG NUT	1.25
28	GU077-05	ANTI-REVERSE PAWL SCREW	.15	58	JU083-01	DRAG CLICK SPRING	1.85
29	JU063-01	ANTI-REVERSE PAWL 'A' CNTR	.95	59	JU032-01	DRAG KNOB	1.50
30	JU074-01	ANTI-REVERSE PAWL 'B' ON	.95	60	JU101-01	DRAG KNOB SCREW	1.25

Prices subject to change without notice. Prices do not include postage and handling.

**PLEASE ORDER BY PART NUMBER**

Rev. 6/94

Zebco Division Brunswick Corporation, Box 270, Tulsa, OK 74101 USA 918-836-5581

