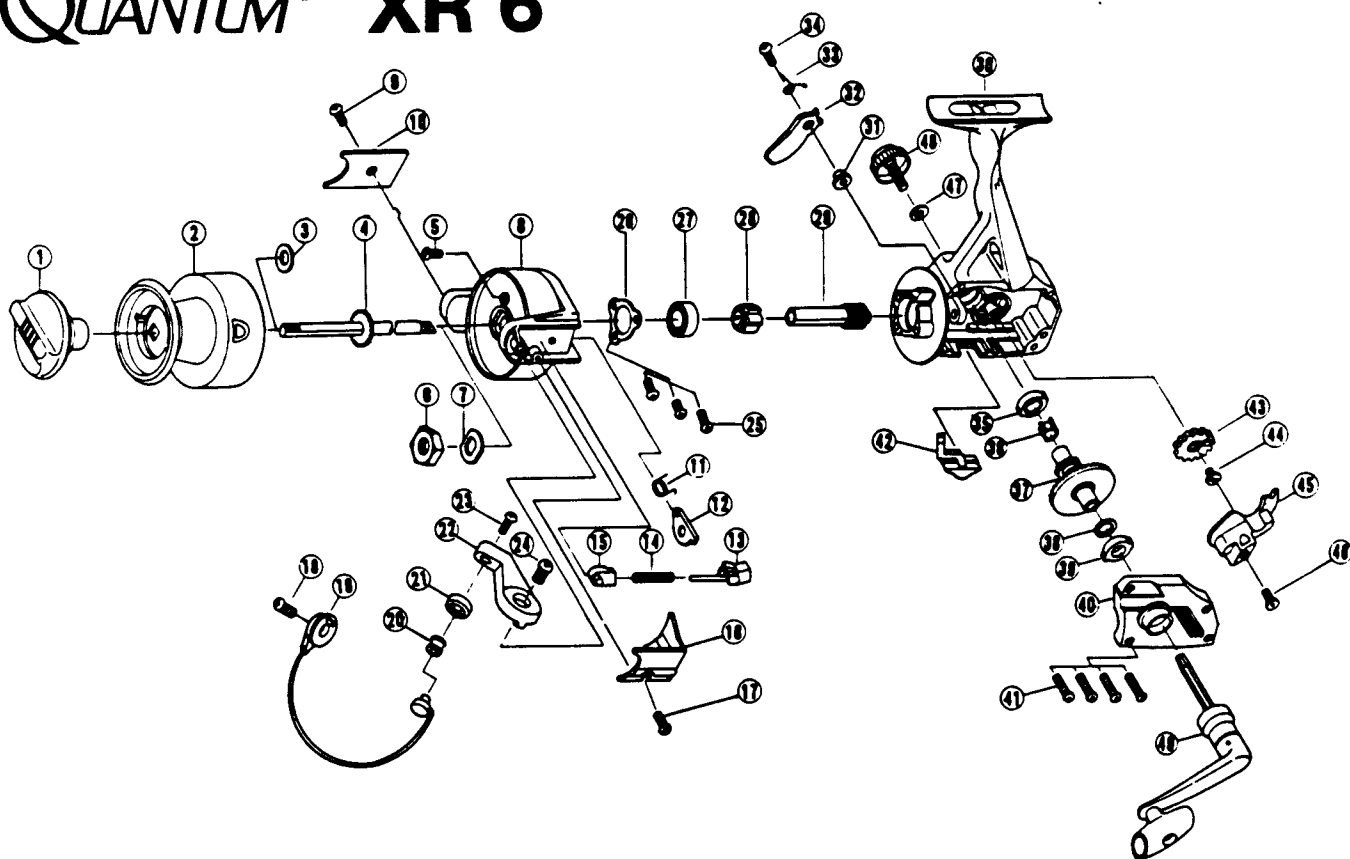


QUANTUM XR 6



(XR6)

KEY NO.	PART NO.	DESCRIPTION	PRICE	KEY NO.	PART NO.	DESCRIPTION	PRICE
1	UL332	DRAG KNOB ASSEMBLY	3.37	27	UL028	BALL BEARING	8.60
2	UL321-5	SPOOL ASSEMBLY	12.90	28	UL080	RATCHET	3.15
3	UL046	SPOOL ADJUSTMENT WASHER	.66	29	UL011	PINION GEAR	6.62
4	UL315	MAIN SHAFT ASSEMBLY	3.42	30	UL001-5	BODY	4.45
5	UL094	ROTOR NUT LOCK SCREW	.66	31	UL091	STOPPER BUSHING	.72
6	UL006	ROTOR NUT	1.10	32	UL063	STOPPER	1.22
7				33	UL061	STOPPER SPRING	1.10
8	UL009-5	ROTOR	3.85	34	UL083	STOPPER SCREW	.72
9	UL085	KICK LEVER COVER SCREW	.72	35	UL013	BODY BUSHING	1.10
10	UL024	KICK LEVER COVER	.72	36	UL086	SILENT CAM	.66
11	UL049	KICK LEVER SPRING	.72	37	UL012	DRIVE GEAR	3.53
12	UL019	KICK LEVER	1.38	38	UL028	DRIVE GEAR ADJUSTMENT WASHER	.66
13	UL031	SPRING SHAFT	.72	39	UL013	BODY COVER BUSHING	1.10
14	UL022	BAIL SPRING	1.10	40	UL023-5	BODY COVER	2.85
15	UL020	SPRING HOLDER	.66	41	UL057	BODY COVER SCREW	.72
16	UL087	BAIL SPRING COVER	.66	42	UL059	STOPPER LEVER	1.10
17	UL085	BAIL SPRING COVER SCREW	.72	43	UL053	OSCILLATOR GEAR	2.32
18	UL051	BAIL HOLDER SCREW	.72	44	UL078	OSCILLATOR GEAR BUSHING	.50
19	UL347	BAIL ASSEMBLY	6.62	45	UL081	OSCILLATOR SLIDER	2.32
20	UL004	LINE ROLLER	2.15	46	UL161	OSCILLATOR SCREW	.66
21				47	UL076	HANDLE CAP WASHER	.56
22	UL007	ARM LEVER	1.10	48	UL073	HANDLE SCREW CAP	1.60
23	UL108	BAIL SCREW	.72	49	UL318-2	HANDLE ASSEMBLY	6.20
24	UL107	ARM LEVER SCREW	.72				
25	UL080	BEARING PLATE SCREW	.66				

Prices subject to change without notice. Prices do not include postage and handling.

PLEASE ORDER BY PART NUMBER

Rev. 6/94

Zebco Division Brunswick Corporation, Box 270, Tulsa, OK 74101 USA 918-836-5581

