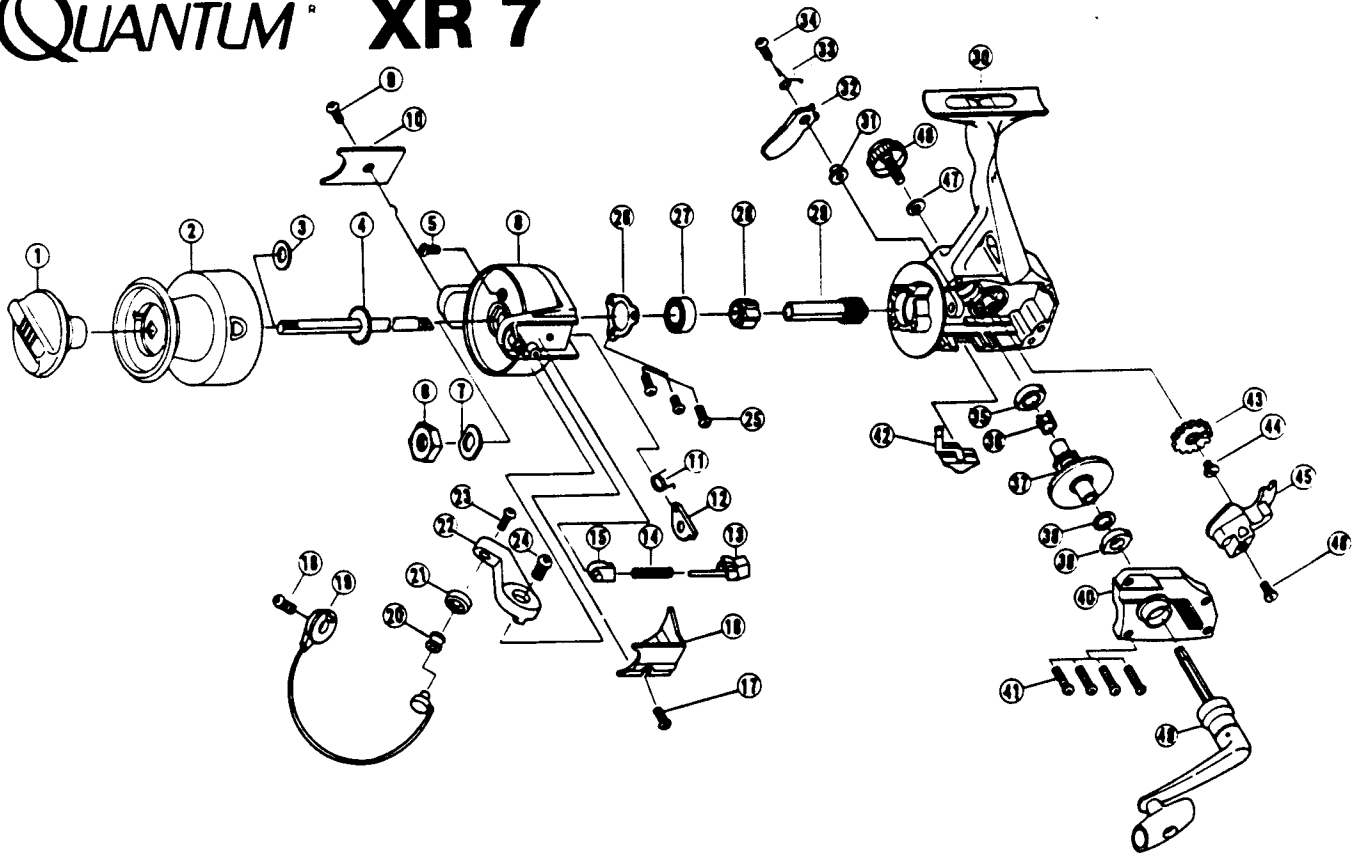


QUANTUM[®] XR 7



(XR7) KEY NO.	PART NO.	DESCRIPTION	PRICE	KEY NO.	PART NO.	DESCRIPTION	PRICE
1	UL332	DRAG KNOB ASSY.	3.37	27	UL028	BALL BEARING	8.60
2	UL321-4	SPOOL ASSY.	8.55	28	UL060	RATCHET	3.15
3	UL046	SPOOL ADJUSTMENT WASHER	.66	29	UL011	PINION GEAR	6.62
4	UL315	MAIN SHAFT ASSY.	3.42	30	VL001-4	BODY	4.80
5	UL094	ROTOR NUT LOCK SCREW	.66	31	UL091	STOPPER BUSHING	.72
6	UL006	ROTOR NUT	1.10	32	UL063	STOPPER	1.22
8	VL009-4	ROTOR	4.60	33	UL061	STOPPER SPRING	1.10
9	UL085	KICK LEVER COVER SCREW	.72	34	UL083	STOPPER SCREW	.72
10	UL024	KICK LEVER COVER	.72	35	UL013	BODY BUSHING	1.10
11	VL049	KICK LEVER SPRING	.66	36	UL086	SILENT CAM	.66
12	UL019	KICK LEVER	1.38	37	UL012	DRIVE GEAR	3.53
13	UL031	SPRING SHAFT	.72	38	UL028	DRIVE GEAR ADJUSTMENT WASHER	.22
14	UL022	BAIL SPRING	1.10	39	UL013	BODY COVER BUSHING	1.10
15	UL020	SPRING HOLDER	.66	40	VL023-4	BODY COVER	2.65
16	VL087	BAIL SPRING COVER	.66	41	UL057	BODY COVER SCREW	.72
17	UL085	BAIL SPRING COVER SCREW	.72	42	UL059	STOPPER LEVER	1.10
18	UL051	BAIL HOLDER SCREW	.72	43	UL053	OSCILLATOR GEAR	2.32
19	VL347	BAIL ASSY.	6.62	44	UL078	OSCILLATOR GEAR GUSHING	.50
20	UL004	LINE ROLLER	2.15	45	UL081	OSCILLATOR SLIDER	2.32
22	UL007	ARM LEVER	1.10	46	UL161	OSCILLATOR SCREW	.66
23	UL108	BAIL SCREW	.72	47	UL076	HANDLE CAP WASHER	.56
24	UL107	ARM LEVER SCREW	.72	48	UL073	HANDLE SCREW CAP	1.60
25	UL080	BEARING PLATE SCREW	.66	49	VL318-2	HANDLE ASSY.	6.70

Prices subject to change without notice. Prices do not include postage and handling.

PLEASE ORDER BY PART NUMBER

Rev. 6/94

Zebco Division Brunswick Corporation, Box 270, Tulsa, OK 74101 USA 918-836-5581

BC
BRUNSWICK