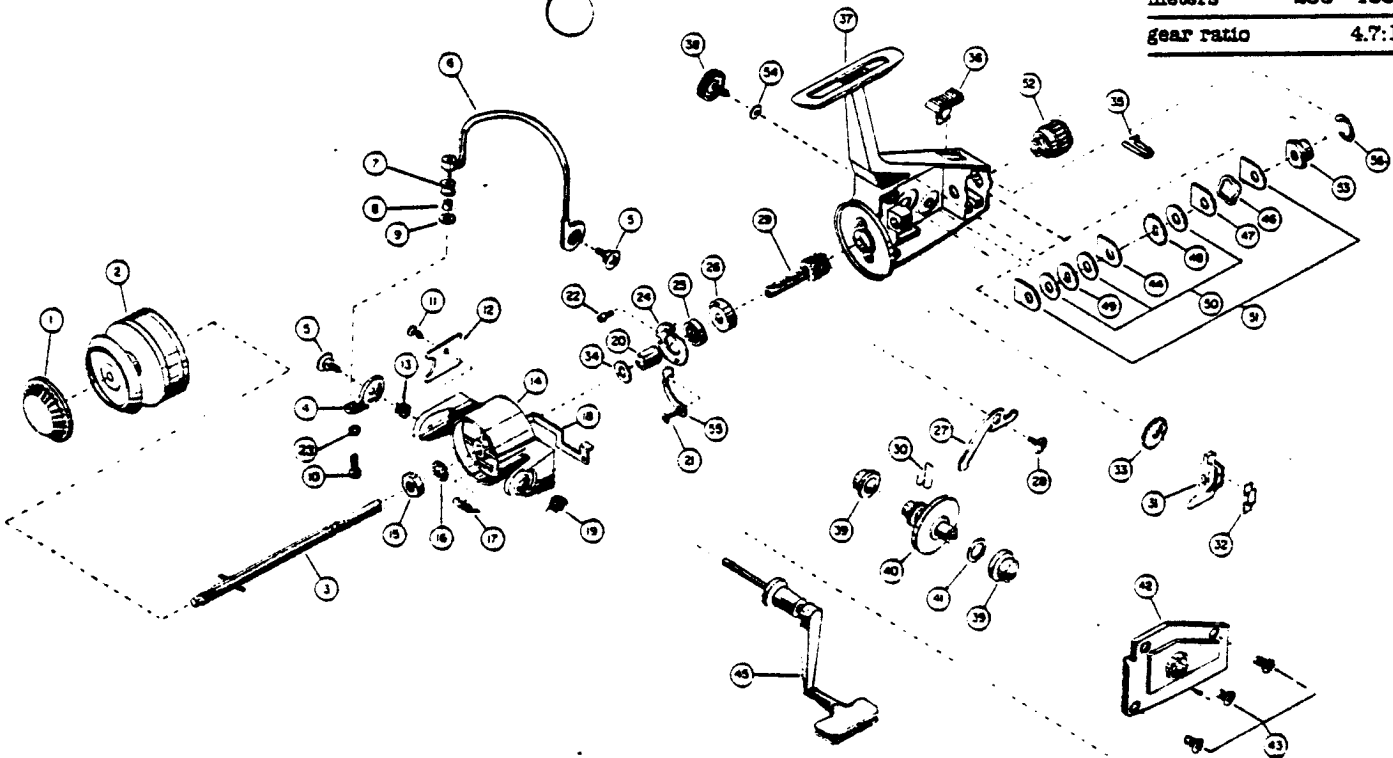


ZEBCO

STERLING™ 7025™

weight	10.3 oz./292 g		
pound test	6	8	10
yards	250	200	135
meters	256	183	123
gear ratio	4.7:1		



Key No.	Part No.	Description	Key No.	Part No.	Description
1	ES350	*Spool Retainer Assy.	30	ES61	Anti-Rev. Pawl Spring
2	ES21	*Spool (see Assy.)	31	ES25	Oscillator Slider
3	ES315	Center Shaft Assy.	32	ES78	Oscillator Slider Ret.
4	ES7	Bail Arm A	33	ES53	Oscillator Gear
5	ES51	Bail Retainer Screw	34	ES24	Trip Lever Retainer
6	ES347	Bail Assembly	35	ES68	Drag Click Spring
7	ES4	Line Roller	36	ES59	Anti-Reverse Knob
8	E016	Line Roller Bushing	37	ES301	Body
9	ES102	Bail Axle Washer	38	ES54	Crank Handle Retainer
10	ES14	Bail Axle Screw	39	ES27	Crank Shaft Bushing
11	ES85	Return Sprg. Cvr. Screw	40	ES12	Crank Gear
12	ES87	Return Spring Cover	41	ES26	Crank Gear Shim
13	ES44	Bail Spring A	42	ES323	Side Plate Assy.
14	ES9	Rotor	43	ES57	Side Plate Screw
15	ES6	Rotor Nut	44	ES37	Drag Washer D
16	ES65	Rotor Lock Washer	45	ES318	Crank Handle Assy.
17	ES22	Bail Actuator Spring	46	ES31	Drag Tension Spring
18	ES19	Bail Trip Lever	47	ES38	Drag Washer B
19	ES49	Bail Spring B	48	ES66	Drag Drive A
20	ES29	Trip Lever Ret. Collar	49	ES39	Drag Drive B
21	ES80	Bearing Ret. Screw	50	ES30	Drag Washer A
22	ES84	Bail Actuator Boss	51	ES46	Drag Washer C
23	ES48	Bail Axle Screw Washer	52	ES32	Drag Knob
24	ES40	Bearing Retainer	53	ES112	Flanged Nut
25	ES28	Pinion Bearing	54	ES109	Handle Retainer Washer
26	ES60	Anti-Rev. Ratchet	55	ES125	Bail Actuator Brake
27	ES63	Anti-Reverse Pawl	56	ES70	Drag Retainer Clip
28	ES100	Anti-Rev. Pawl Screw	*Available as One Unit,		
29	ES11	Pinion	ES321 Spool Assy. w/Spool Retainer		

PLEASE ORDER BY PART NUMBER