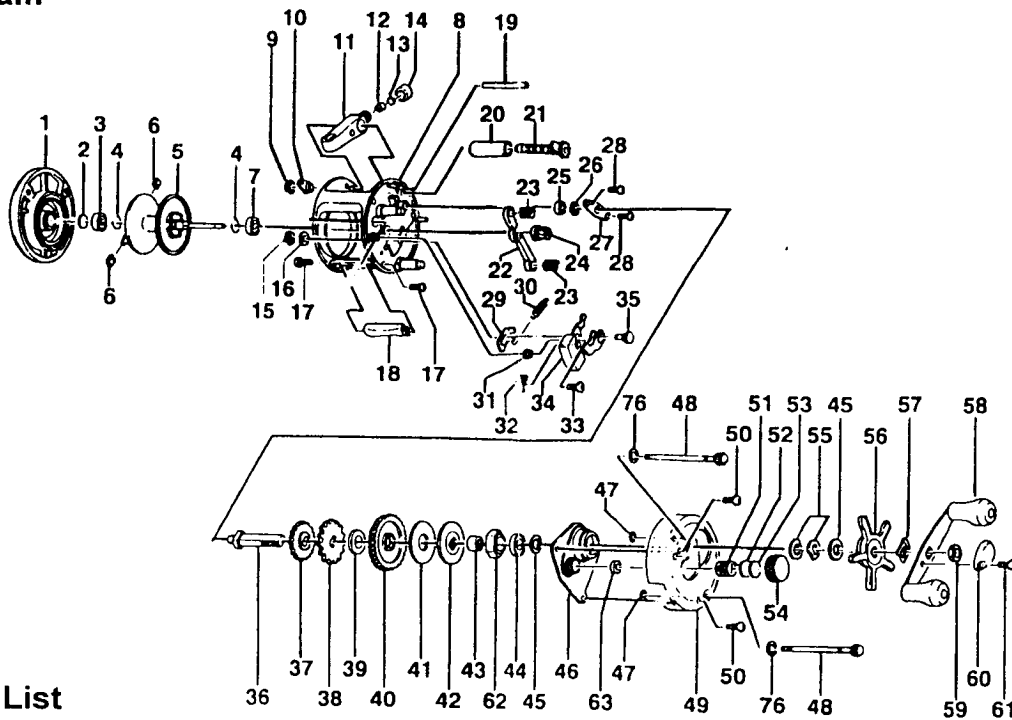


BT200C Diagram



BT200C Parts List

Key No.	Part No.	Description	Key No.	Part No.	Description
1	LV323-03	Palm Side Cover Assembly	32	JX104-01	Spring - Release Slider
2	XX038-02	Spool Shaft Washer	33	XX050-01	Screw - Release Slider
3	XX106-01	Spool Shaft Bearing - Palm	34	JX339-02	Release Slider Assembly
4	JX080-01	Clip Ring	35	JX102-01	Kick Lever Guide Post
5	JX321-02	Spool Assembly	36	JX008-01	Crank Shaft
6	XX044-01	Brake Shoe B	37	JX112-01	O/S Drive Gear
7	XX106-01	Spool Shaft Bearing - Gear Side	38	JX083-01	Trip Ratchet
8	JX301-10	Frame Assembly	39	QW111-01	Washer - Ratchet
9	QW120-01	Worm Shaft E-Clip	40	JX012-01	Drive Gear
10	JX067-01	Worm Shaft Bushing	41	JX059-01	Drag Disc
11	JX347-02	Line Guide Carrier Assembly	42	JX045-01	Drag "D" Washer
12	JX006-02	Line Guide Pawl	43	ZW052-01	One Way Bearing Sleeve
13	JX035-01	Line Guide Pawl Washer	44	TW058-01	Crank Shaft Bearing - Upper
14	JX007-02	Line Guide Carrier Screw	45	JX038-01	Crank Shaft Washer
15	NX092-01	Kick Lever Guide Post E-Clip	46	JX066-02	Crank Shaft Guide
16	XX035-01	Kick Lever Guide Washer	47	JX073-01	Thumb Screw O-Ring
17	JX050-01	Thumb Rest Screw	48	JX074-03	Thumb Screw
18	JX009-02	Thumb Rest	49	JX024-14	Gear Side Cover
19	JX061-01	Line Guide Carrier Guide	50	QW123-01	Right Side Cover Screw
20	JX016-01	Worm Shaft Guide	51	JX105-01	Tension Knob Spring
21	JX372-01	Worm Shaft Assembly	52	QW032-02	Spool Tension Washer
22	JX025-01	Pinion Yoke	53	JX082-01	Spool Cushion Washer
23	JX040-01	Yoke Spring	54	JX033-02	Spool Tension Knob
24	JX011-01	Pinion Gear	55	JX046-01	Spring "D" Washer
25	JX017-01	Crank Shaft Bushing - Lower	56	JX055-02	Star Drag
26	QW120-01	Crank Shaft E-Clip	57	NX054-01	Handle Washer
27	JX002-01	Crank Shaft Retainer	58	UW318-06	Handle Assembly
28	JX107-01	Crank Shaft Retainer Screw	59	QW003-01	Handle Nut
29	JX077-01	Kick Lever	60	JX034-02	Handle Nut Cap
30	JX097-01	Kick Lever Spring	61	QW123-01	Handle Nut Cap Screw
31	JX068-01	Release Slider Guide Bushing	62	ZW063-01	One Way Bearing

QUANTUM U.S. LIMITED WARRANTY - Quantum products are warranted for a period of one (1) year from date of purchase against defects in workmanship and/or materials. Purchaser should return defective reels postage prepaid and insured with proof of purchase and \$2.25 for postage and handling direct to Zebco. Zebco will repair or replace products at its option and return direct to purchaser. This warranty does not cover Quantum products damaged due to abuse, misuse, normal wear, excessive wear caused by neglect of cleaning and lubrication required or general service requirements due to owner's failure to provide reasonable and necessary maintenance. Quantum reels and rods not covered by the Quantum limited warranty may be repaired at a nominal charge to the purchaser provided parts are available and the product is returned with return postage prepaid. "ALL INCIDENTAL AND/OR CONSEQUENTIAL DAMAGES ARE EXCLUDED FROM THIS WARRANTY INSERT. IMPLIED WARRANTIES ARE LIMITED TO THE LIFE OF THIS WARRANTY. SOME STATES DO NOT ALLOW LIMITATIONS ON HOW LONG AN IMPLIED WARRANTY LASTS OR THE EXCLUSION OR LIMITATION OF INCIDENTAL OR CONSEQUENTIAL DAMAGES, SO THE ABOVE LIMITATION OR EXCLUSIONS MAY NOT APPLY TO YOU. THIS WARRANTY GIVES YOU SPECIFIC LEGAL RIGHTS, AND YOU MAY ALSO HAVE OTHER LEGAL RIGHTS WHICH MAY VARY FROM STATE TO STATE."

QUANTUM INTERNATIONAL LIMITED WARRANTY - Quantum products are warranted for a period of one (1) year from date of purchase against defects in workmanship and/or materials. Purchaser should return defective products postage prepaid and insured, along with proof of purchase, (add \$2.25 in U.S. or Canada for postage and handling) direct to the dealer. Zebco will repair or replace products at its option and return direct to dealer. This warranty does not cover Quantum products damaged due to abuse, misuse, normal wear, excessive wear caused by neglect of cleaning and lubrication required or general service requirements due to owner's failure to provide reasonable and necessary maintenance. Quantum products not covered by the Quantum Limited Warranty may be repaired at a nominal charge to the purchaser provided parts are available and the product is returned with return postage prepaid.