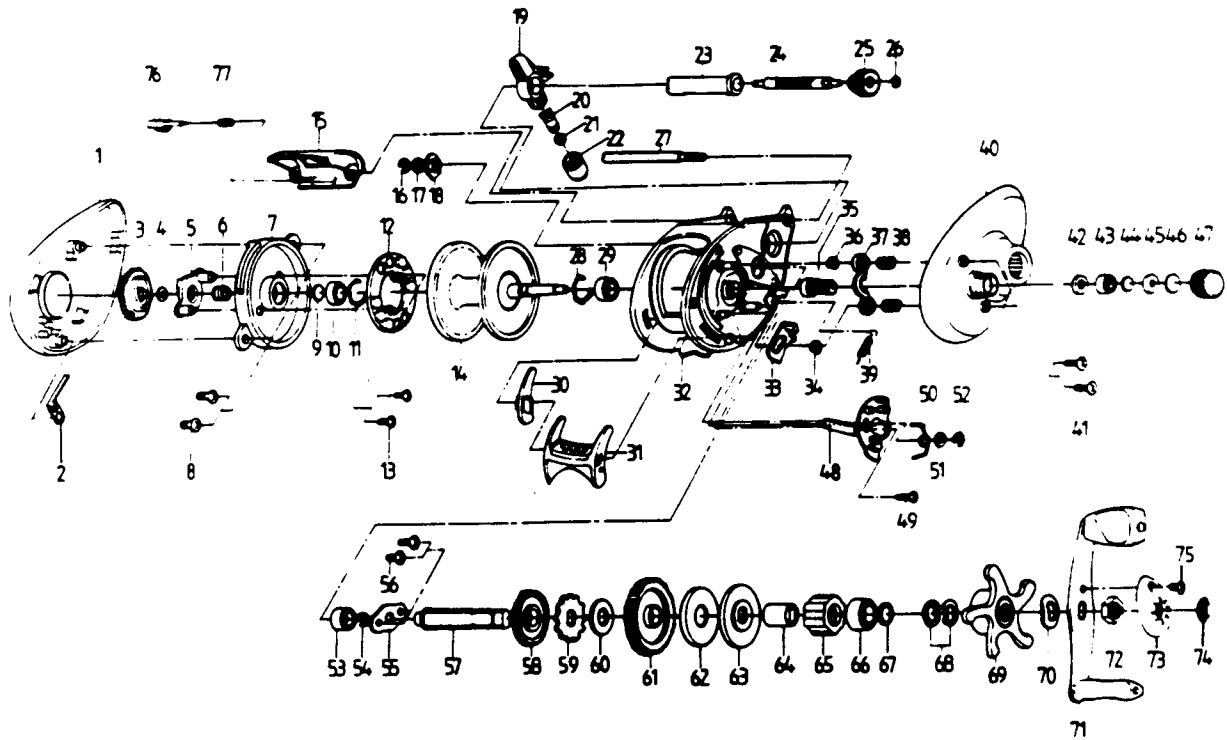


QUANTUM E400



| Key No. | Part No. | Description | Price | Key No. | Part No. | Description | Price |
|---------|----------|------------------------------|-------|---------|----------|-----------------------------|-------|
| 1 | ZW023-01 | Left Side Cover | 8.50 | 40 | ZW024-01 | Right Side Cover | 8.90 |
| 2 | ZW108-01 | Clicker | 1.00 | 41 | QW053-01 | Right Side Cover Screw | .67 |
| 3 | ZW026-01 | Magnet Dial | 1.60 | 42 | QW101-01 | Spool Tension Knob O-Ring | .26 |
| 4 | NX105-01 | Dial Friction Ring | .62 | 43 | QW117-01 | Spool Tension Knob Bushing | .21 |
| 5 | ZW028-01 | Slide Cam | 1.20 | 44 | QW032-01 | Spool Tension Washer | .52 |
| 6 | NX071-01 | Slide Cam Spring | .52 | 45 | QW081-01 | Spool Tension Collar | 4.02 |
| 7 | ZW051-01 | Spool Cover | 2.80 | 46 | QW082-01 | Spool Cushion Washer | .67 |
| 8 | ZW125-01 | Spool Cover Screw | 1.00 | 47 | ZW033-01 | Spool Tension Knob | 5.00 |
| 9 | QW032-01 | Spool Tension Shim | .52 | 48 | ZW039-01 | Release Slider | 3.10 |
| 10 | SW017-01 | Ball Bearing - Spool Shaft | 6.80 | 49 | ZW053-01 | Thumb Bar Screw | 1.00 |
| 11 | QW080-01 | Clip Ring | .52 | 50 | ZW104-01 | Release Slider Spring | 1.00 |
| 12 | QW330-01 | Magnet Plate Assy | 2.88 | 51 | SW121-01 | Release Slider Guide Washer | .50 |
| 13 | QW076-01 | Magnet Plate Screw | .67 | 52 | NX090-01 | Release Slider Guide E-Clip | .41 |
| 14 | ZW321-01 | Spool Assy | 14.85 | 53 | ZW017-01 | Crank Shaft Lower Bushing | .65 |
| 15 | ZW027-01 | Front Support | 3.35 | 54 | QW120-01 | Crank Shaft E-Clip | .26 |
| 16 | NX092-01 | Worm Shaft E-Clip | .30 | 55 | ZW002-01 | Crank Shaft Retainer | 1.20 |
| 17 | QW035-03 | Worm Shaft Washer | .26 | 56 | TW107-01 | Crank Shaft Retainer Screw | .10 |
| 18 | QW067-01 | Worm Shaft Bushing | .67 | 57 | ZW008-01 | Crank Shaft | 5.60 |
| 19 | ZW347-01 | Line Guide Carrier Assy | 5.70 | 58 | ZW112-01 | Oscillate Drive Gear | 1.55 |
| 20 | ZW006-01 | Line Guide Pawl | 2.80 | 59 | QW083-01 | Trip Ratchet | .36 |
| 21 | QW035-03 | Line Guide Pawl Washer | .26 | 60 | QW111-01 | Trip Ratchet Washer | .26 |
| 22 | ZW007-01 | Pawl Cap Screw | 2.85 | 61 | ZW012-01 | Drive Gear | 10.90 |
| 23 | ZW016-01 | Worm Shaft Guide | 2.00 | 62 | QW059-01 | Drag Disc | 1.70 |
| 24 | ZW072-01 | Worm Shaft | 7.20 | 63 | QW045-01 | Drag "D" Washer | .82 |
| 25 | ZW085-01 | Oscillate Pinion Gear | 1.75 | 64 | CW052-01 | One Way Bearing Sleeve | 2.88 |
| 26 | NX090-01 | Oscillate Pinion Gear E-Clip | .41 | 65 | U0063-02 | One Way Bearing | 9.27 |
| 27 | ZW061-01 | Stabilizer Bar | 2.80 | 66 | TW058-01 | Crank Shaft Ball Bearing | 7.21 |
| 28 | QW080-01 | Clip Ring | .52 | 67 | TW035-02 | Crank Shaft Washer | .46 |
| 29 | SW017-01 | Ball Bearing - Spool Shaft | 6.80 | 68 | QW046-02 | Spring "D" Washer | .98 |
| 30 | ZW056-01 | Thumb Bar Retainer | .50 | 69 | ZW055-01 | Star Drag | 2.80 |
| 31 | ZW309-01 | Thumb Bar Assy | 1.00 | 70 | QW054-01 | Handle Washer | .72 |
| 32 | ZW301-01 | Frame Assy | 18.00 | 71 | ZW318-01 | Handle Assy | 6.35 |
| 33 | ZW077-01 | Kick Lever | 1.55 | 72 | QW003-03 | Handle Nut | 1.65 |
| 34 | QW120-01 | Pinion Yoke Shaft E-Clip | .26 | 73 | ZW034-01 | Handle Nut Cap | 1.00 |
| 35 | ZW311-01 | Pinion Gear Assy | 10.10 | 74 | ZW130-01 | Line Indicator | 1.00 |
| 36 | QW120-01 | Pinion Yoke Shaft E-Clip | .26 | 75 | QW123-01 | Handle Nut Cap Screw | .15 |
| 37 | ZW025-01 | Pinion Yoke | 1.0-0 | 76 | ZW119-01 | Side Cover Locking Lever | 1.00 |
| 38 | QW040-01 | Pinion Yoke Spring | .67 | 77 | ZW096-01 | Locking Lever Spring | 1.00 |
| 39 | ZW097-01 | Kick Lever Spring | .65 | | | | |

Prices subject to change without notice. Prices do not include postage and handling.

PLEASE ORDER BY PART NUMBER

Rev. 7/95

Zebco Division Brunswick Corporation, Box 270, Tulsa, OK 74101 USA 918-836-5581

