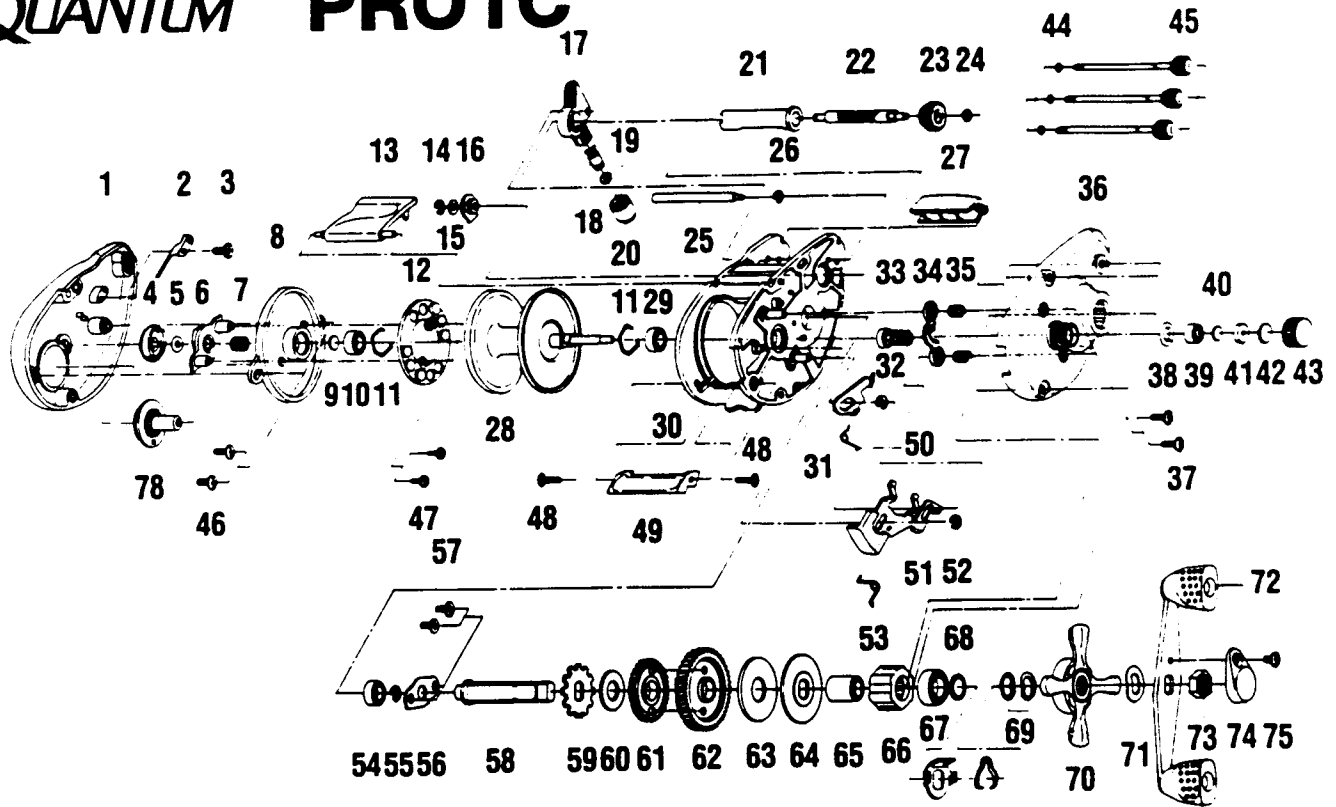


# QUANTUM PRO1C



Key No.	Part No.	Description	Price	Key No.	Part No.	Description	Price
1	TW023-01	Left Side cover	8.24	40	QW032-01	Washer - Spool Tension	.50
2	QW108-01	Clicker	.65	41	QW081-01	Collar	3.90
3	QW125-01	Screw - Clicker	.45	42	QW082-01	Cushion Washer - Spool	.65
4	UW026-01	Magnet Control Cam	1.53	43	TW033-02	Spool Tension Knob	2.83
5	NX105-01	Dial Friction Ring	.60	44	QW073-01	Ring Thumb Screw Ret.	.70
6	QW028-01	Slide Cam	.70	45	QW374-02	Thumb Screw	1.13
7	NX071-01	Slide Cam Spring	.50	46	QW125-01	Screw - Spool Cover	.45
8	QW051-01	Spool Cover	1.70	47	QW076-01	Screw Magnet Ring	.65
9	QW032-01	Spool Tension Shim	.50	48	QW050-01	Screw - Thumb Rest	.93
10	SW017-01	Bearing	6.59	49	QW009-02	Thumb Rest	.93
11	QW080-01	Clip Ring	.50	50	QW097-01	Spring - Kick Lever	.45
12	QW330-01	Magnet Plate Assy	2.80	51	QW339-01	Release Slider Assy	2.99
13	TW027-01	Hood	5.46	52	QW120-01	E-Ring - Release Slider	.25
14	NX092-01	E-Clip (Worm Shaft)	.25	53	QW104-01	Spring - Release Slider	.93
15	QW035-03	Washer (Worm Shaft)	.25	43	QW017-01	Bushing - Crankshaft	.20
16	QW067-01	Worm Shaft Bushing	.65	55	QW120-01	E-Ring - Crankshaft	.25
17	QW347-01	Line Guide Carrier	2.70	56	QW002-01	Retainer-Crankshaft	.80
18	QW006-01	Line Guide Pawl	2.70	57	TW107-01	Screw - Crankshaft Retainer	.10
19	QW035-03	Washer (L/G Pawl)	.25	58	QW008-01	Crankshaft	2.30
20	QW007-02	Line Guide Carrier Screw	2.16	59	QW083-01	Trip Ratchet	.35
21	QW016-01	Worm Shaft Guide	1.10	60	QW111-01	Washer	.25
22	QW072-01	Worm Shaft	4.30	61	QW112-01	Gear-L/W Idler	.85
23	QW085-01	Level wind Gear	.85	62	QW012-01	Drive Gear	10.56
24	NX090-01	E-Ring (L/W Gear)	.40	63	QW059-01	Drag Disc	1.65
25	QW061-02	Stabilizer Bar	2.58	64	QW045-01	Drag Washer	.80
26	NX090-01	E-Ring (Stabilizer Bar)	.40	65	QW052-01	Clutch Sleeve	2.75
27	QW099-07	Front Support	3.24	66	QW063-01	Anti-Reverse Clutch	10.50
28	QW321-01	Spool Assy	14.42	67	TW058-01	Bearing - Crankshaft Top	7.00
29	SW017-01	Bearing	6.59	68	TW035-01	Washer - Crankshaft	1.44
30	TW301-01	Frame Assy	26.24	69	QW046-02	Spring "D" Washer	.95
31	QW077-01	Kick Lever	.30	70	QW055-01	Drag Star	1.85
32	QW120-01	E-Ring (Kick Lever)	.25	71	QW054-01	Handle Washer	.70
33	QW311-01	Pinion Gear	9.79	72	TW318-01	Handle Assy	6.18
34	QW025-01	Pinion Yoke	.93	73	QW003-01	Handle Nut	.35
35	QW040-01	Spring-Pinion Yoke	.65	74	QW034-01	Handle Nut Cap	.25
36	QW024-03	Right Side Cover	8.55	75	QW123-03	Handle Nut Cap Screw	.10
37	QW053-02	Screw (Rt. Side Cover)	.93	76	TW110-01	Click Spring Retainer	2.16
38	QW101-01	Tension Knob Ring	.25	77	TW114-01	Click Spring	1.08
39	QW117-01	Bushing - Tension Knob	.20	78	TW026-01	Magnet Control Dial	1.53

Prices subject to change without notice. Prices do not include postage and handling.

**PLEASE ORDER BY PART NUMBER**

Rev. 6/95

Zebco Division Brunswick Corporation, Box 270, Tulsa, OK 74101 USA 918-836-5581

