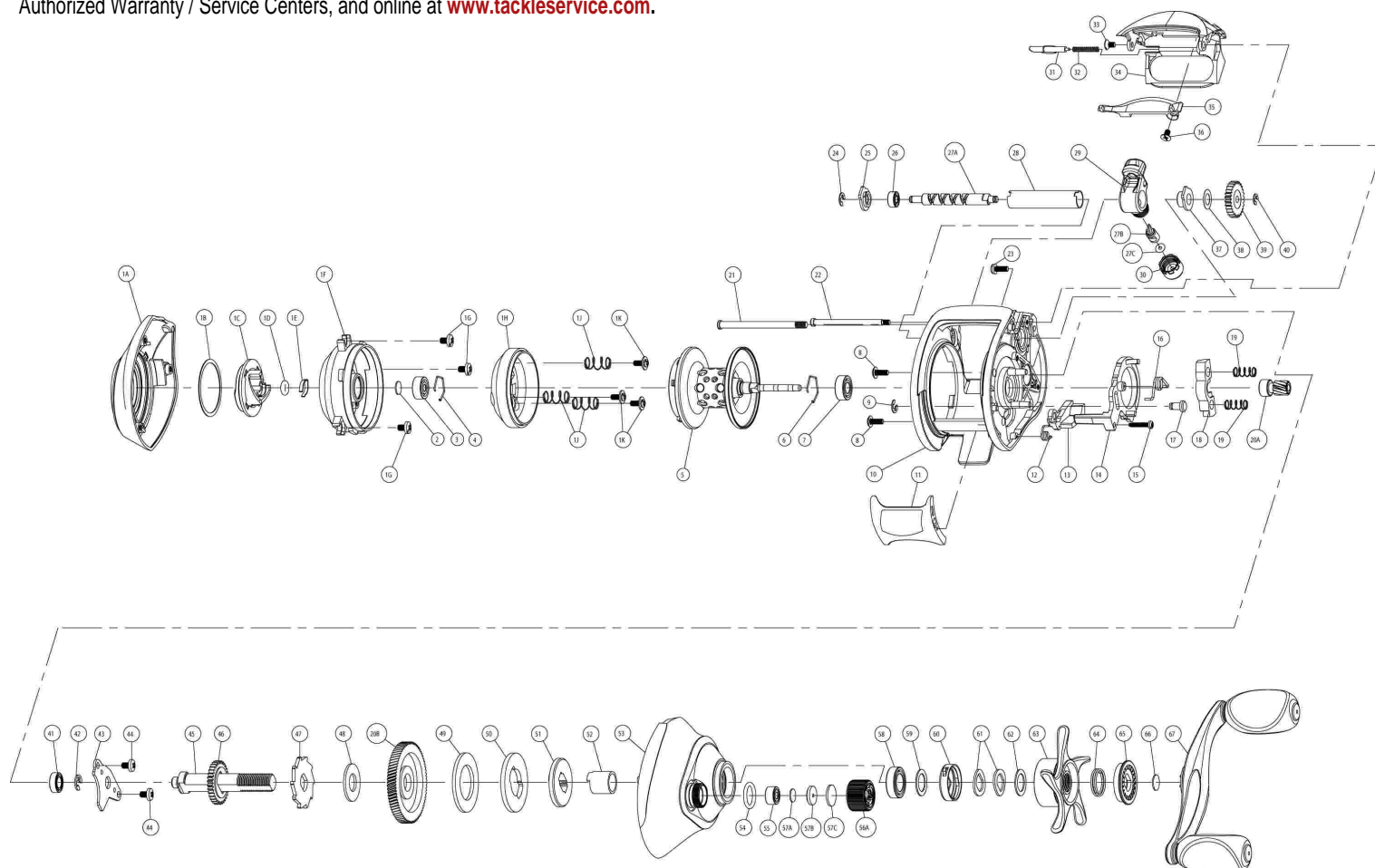


# Tour Edition PT Parts Diagram - Right Hand - TE1160PT / TE1170PT

## ORDERING PARTS

Refer to the parts list and diagram for your model. Locate the part you need and identify the key number for the part you wish to order for your model. Always state the model number, part number, part description and quantity on your orders. Parts may be ordered direct from the Factory Service Department (1-800-588-9030), Authorized Warranty / Service Centers, and online at [www.tackleservice.com](http://www.tackleservice.com).



Key No.	Description	TE1160PT	TE1170PT
1	Palm Side Cover Kit include	UX4023-03	←
	1A - Palm Side Cover Assembly		
	1B - Centrifugal Dial Washer		
	1C - Centrifugal Dial Assembly		
	1D - Centrifugal Dial Friction Ring		
	1E - Centrifugal Dial Spring		
	1F - Spool Cover		
	1G - Spool Cover Screw		
	1H - Brake Ring Assembly		
	1J - Brake Ring Slider Spring		
	1K - Brake Ring Retainer Screw		
	1L - Spool Cover Screw		
	2- Spool Tension Shim		
	3- Spool Shaft Ball Bearing (Palm)		
	4- Clip Ring		
2	Spool Tension Shim	QW032-04	←
3	Spool Shaft Ball Bearing (Palm)	QV017-01	←
4	Clip Ring	HV080-01	←
5	Spool Assembly	UX321-03	UX321-04
6	Clip Ring	EX080-01	←
7	Spool Shaft Ball Bearing (Gear)	EX017-02	←
8	Gear Side Cover Screw - B	QW053-01	←
9	E-Clip	NX092-01	←
10	Frame	UX001-03	UX001-04
11	Thumb Bar	UX009-01	←
12	Kick Lever Spring	GX097-01	←
13	Kick Lever	UX077-01	←
14	Release Slider	UX039-01	←
15	Thumb Bar Screw	ZW053-01	←
16	Release Slider Spring	CX104-01	←
17	Release Slider Guide Pin	UX102-01	←
18	Pinion Yoke	GX025-01	←
19	Yoke Spring	GX040-01	←
20	Gear Kit include	UX4011-01	VX4011-01
	20A - Pinion Gear Assembly		
	20B - Drive Gear		
21	Stabilizer Bar - B	UX061-01	←
22	Stabilizer Bar - A	VX061-01	←
23	Gear Side Cover Screw - A	BX123-01	←
24	E-Clip	NX092-01	←
25	Bearing Retainer	CX067-01	←
26	Worm Shaft Ball Bearing	XX117-01	←
27	Worm Shaft Kit Include	HV4072-02	←
	27A - Worm Shaft		
	27B - Line Guide Pawl		
	27C - Carrier Washer		

Key No.	Description	TE1160PT	TE1170PT
28	Worm Shaft Guide	UX016-01	←
29	Line Guide Carrier	UX047-01	←
30	Line Guide Carrier Screw	ZW007-02	←
31	Side Cover Locking Lever	YX119-02	←
32	Side Cover Locking Lever Spring	ZW096-01	←
33	Hood Screw	HX107-01	←
34	Hood	UX027-02	UX027-03
35	Front Support	UX099-01	UX099-02
36	Front Support Screw	HX107-01	←
37	Worm Shaft Bushing (Gear)	HV068-01	←
38	O/S Pinion Gear Washer	EX035-01	←
39	O/S Pinion Gear	UX085-01	←
40	E-Clip	NX090-01	←
41	Crank Shaft Bearing - Lower	SW017-01	←
42	E-Clip	QW120-01	←
43	Crank Shaft Retainer	UX002-01	←
44	Crank Shaft Retainer Screw	JX107-01	←
45	Crank Shaft	UX008-01	←
46	O/S Drive Gear	UX112-01	←
47	Trip Ratchet	EX083-01	←
48	Trip Ratchet Washer	QW111-01	←
49	Drag Disc	UX059-01	←
50	Drag Key Washer	UX045-01	←
51	Link	UX036-01	←
52	One Way Bearing Sleeve	UX052-01	←
53	Gear Side Cover Assembly	UX324-03	UX324-04
54	Tension Knob O-Ring	QW101-01	←
55	Tension Knob Ball Bearing	SW117-01	←
56	Spool Tension Kit Include	CX4033-01	CX4033-03
	56A - Spool Tension Knob Assembly		
	57 - Spoon Tension Washer Kit		
57	Spool Tension Washer Kit Include	QW4032-01	←
	57A - Spool Tension Washer		
	57B - Spool Tension Collar		
58	Crank Shaft Ball Bearing	TW058-01	←
59	Star Drag Washer	ZW032-01	←
60	Drag Click Spring Assembly	YX4114-01	←
61	"Spring""D"" Washer"	JX046-01	←
62	Star Drag Washer	ZW032-01	←
63	Star Drag Assembly	UX355-03	UX355-04
64	Handle Ratchet Spring	UX040-01	←
65	Handle Ratchet	UX054-01	←
66	Handle Washer	UX032-01	←
67	Handle Assembly	UX318-02	←