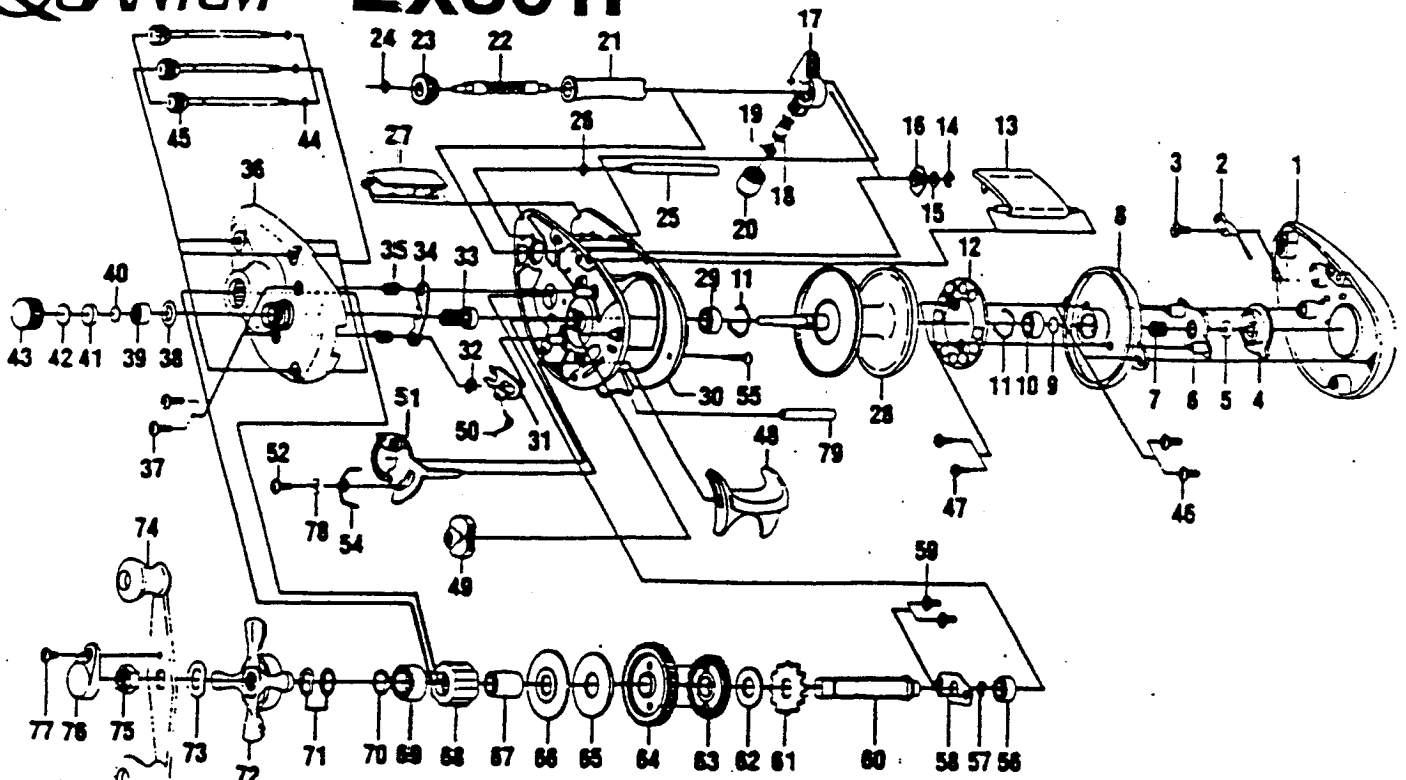


# QUANTUM EX301P



Key No.	Part No.	Description	Price	Key No.	Part No.	Description	Price
1	XW024-1	Right Side Cover	8.70	40	QW032-1	Washer - Spool Tension	.52
2	QW108	Clicker	.93	41	QW081	Collar	.93
3	QW125	Screw - Clicker	.93	42	QW082	Cushion Washer - Spool	.93
4	XW026	Magnet Control Dial	1.24	43	QW033	Spool Tension Knob	2.83
5	CX4250	Dial Friction Ring	.49	44	QW073	Ring - Thumb Screw Ret.	1.13
6	QW028	Slide Cam	1.13	45	QW374	Thumb Screw	1.13
7	CX4301	Slide Cam Spring	.36	46	QW125	Screw - Spool Cover	.93
8	QW051	Spool Cover	2.68	47	QW076	Screw - Magnet Ring	.62
9	QW032-1	Spool Tension Shim	.52	48	SW009	Thumb Bar	2.73
10	SW017	Bearing	6.59	49	XW087	Flippin' Switch	.93
11	QW080	Clip Ring	.52	50	XW097	Spring - Kick Lever	.62
12	QW330	Magnet Plate Assy.	5.51	51	XW039	Release Slider	2.16
13	QW027-3	Hood	5.46	52	QW076	Screw Release Slider	.62
14	ZX4657	E-Clip (Worm Shaft)	.69	54	XW104	Spring - Release Slider	.62
15	QW035-3	Washer (Worm Shaft)	.62	55	SW050	Thumb Bar Retaining Screw	.93
16	QW067	Worm Shaft Bushing	.93	56	QW017	Bearing - Crankshaft	6.59
17	QW347	Line Guide Carrier	5.51	57	CX4152	E-Ring - Crankshaft	.31
18	CW006	Line Guide Pawl	2.68	58	QW002	Retainer - Crankshaft	1.13
19	QW035-3	Washer (L/G Pawl)	.62	59	QW107	Screw - Crankshaft Retainer	.93
20	QW007	Line Guide Carrier Screw	2.16	60	QW008-2	Crankshaft	5.41
21	QW016	Worm Shaft Guide	1.91	61	QW083	Trip Ratchet	1.70
22	QW072	Worm Shaft	6.95	62	QW111	Washer	.62
23	QW085	Level Wind Gear	1.70	63	QW112	Gear - L/W Idler	1.49
24	VX4243	E-Ring (L/W Gear)	.62	64	XW012-2	Drive Gear	10.56
25	QW061	Stabilizer Bar	2.58	65	QW059	Drag Disc	2.94
26	XW4243	E-Ring (Stabilizer Bar)	.62	66	QW045	Drag Washer	1.24
27	QW099-3	Front Support	3.24	67	QW052	Clutch Sleeve	3.19
28	QW321-2	Spool Assy.	14.42	68	QW063	Anti-Reverse Clutch	10.56
29	SW017	Bearing	6.59	69	TW058	Bearing - Crankshaft Top	6.70
30	XW001	Frame	8.45	70	QW035	Washer - Crankshaft	1.49
31	SW077-2	Kick Lever	1.49	71	CX4662	Spring "D" Washer	.36
32	CX4152	E-Ring (Kick Lever)	.31	72	QW055-2	Drag Star	2.73
33	XW311-2	Pinion Gear	9.79	73	CX4660	Handle Washer	.36
34	XW025	Pinion Yoke	2.11	74	QW318	Handle Assy.	8.57
35	QW040	Spring-Pinion Yoke	.93	75	QW003-2	Handle Nut	1.60
36	XW023-1	Left Side Cover	8.24	76	QW034	Handle Nut Cap	.93
37	QW053-1	Screw (Lft. Side Cover)	.93	77	QW123	Handle Nut Cap Screw	.93
38	CX4258	Tension Knob Ring	.36	78	SW121	Washer - Release Slider	.62
39	QW117	Bearing	8.45	79	SW094	Spacer	.46

Prices subject to change without notice. Prices do not include postage and handling.

**PLEASE ORDER BY PART NUMBER**

Rev. 5/93

Zebco Division Brunswick Corporation, Box 270, Tulsa, OK 74101 USA 918-836-5581

