

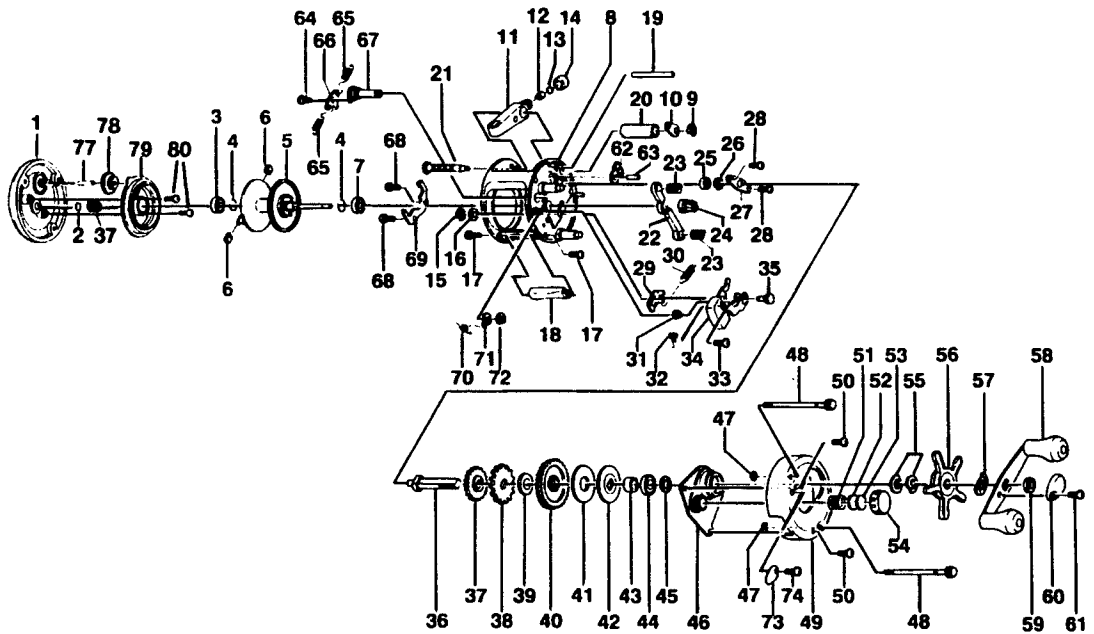
QUANTUM[®] IR310

SPECIFICATIONS:

Medium Heavy Freshwater
 Light Saltwater
 200 yds/20 lb. Line Capacity
 5.2:1 Ratio
 10.6 oz. Weight
 Thumb Button Clutch
 Posi-Lok Anti-Reverse
 3 Ball Bearings

FEATURES:

Machined, one-piece
 aluminum frame
 Rugged, one-piece
 aluminum side plates
 Machine-forged aluminum
 spool
 Brass Magnum Gears
 Oversized metal star drag
 Audible on/off bait click
 Non-disengaging levelwind
 Color: Gold



| Key No. | Part No. | Description | Price | Key No. | Part No. | Description | Price |
|---------|----------|--------------------------------|-------|---------|-----------|-------------------------------|-------|
| 1 | FV323-01 | Left Side Cover Assy | 14.15 | 41 | JX059-01 | Drag Disc | 1.44 |
| 2 | XX038-02 | Spool Shaft Washer | .26 | 42 | JX045-01 | Drag "D" Washer | .88 |
| 3 | JX106-01 | Bearing - Spool Shaft | 6.33 | 43 | JX052-01 | Spacer - Crank Shaft | .67 |
| 4 | JX080-01 | Clip Ring | .26 | 44 | TW058-01 | Bearing - Crank Shaft (U) | 7.21 |
| 5 | FV321-01 | Spool Assy | 14.75 | 45 | JX038-01 | Crank Shaft Washer | .31 |
| 6 | XX044-01 | Brake Shoe B | .26 | 46 | JX066-02 | Crank Shaft Guide | 3.35 |
| 7 | JX106-01 | Bearing - Spool Shaft | 6.33 | 47 | JX073-01 | O-Ring - Thumb Screw | .31 |
| 8 | FV301-01 | Frame Assy | 25.20 | 48 | JX074-05 | Thumb Screw | .45 |
| 9 | QW120-01 | E-Clip - Worm Shaft | .26 | 49 | XX024-06 | Right Side Cover | 9.75 |
| 10 | JX067-01 | Bushing - Worm Shaft | .31 | 50 | QW123-01 | Right Side Cover Screw | .15 |
| 11 | JX347-02 | Line Guide Carrier Assy | 2.32 | 51 | JX105-01 | Spring - Tension Knob | .31 |
| 12 | JX006-02 | Line Guide Pawl | 2.25 | 52 | QW032-02 | Washer - Spool Tension | .26 |
| 13 | JX035-01 | Washer - Line Guide Pawl | .26 | 53 | JX082-01 | Washer - Cushion | .21 |
| 14 | JX007-02 | Screw - Line Guide Carrier | .52 | 54 | XX033-01 | Spool Tension Knob | 2.82 |
| 15 | NX092-01 | E-Clip - Kick Lever Guide Post | .30 | 55 | JX046-01 | Spring "D" Washer | .67 |
| 16 | XX035-01 | Washer - Kick Lever Guide | .26 | 56 | XX355-02 | Star Drag Assy | 3.45 |
| 17 | JX050-01 | Screw - Thumb Rest | .31 | 57 | NX054-01 | Handle Washer | .26 |
| 18 | FV009-01 | Thumb Rest | .65 | 58 | FV318-01 | Handle Assy | 7.00 |
| 19 | FV061-01 | Line Guide Carrier Guide | 1.00 | 59 | QW003-01 | Handle Nut | .36 |
| 20 | FV016-01 | Worm Shaft Guide | .75 | 60 | JX034-02 | Handle Nut Cap | .36 |
| 21 | FV372-01 | Worm Shaft Assy | 7.45 | 61 | QW123-01 | Handle Nut Cap Screw | .15 |
| 22 | JX025-01 | Pinion Yoke | .52 | 62 | JX363-01B | Anti-Reverse Pawl Assy | 2.52 |
| 23 | JX040-01 | Yoke Spring | .21 | 63 | JX098-01 | Post - Anti-Reverse Pawl | .41 |
| 24 | JX011-01 | Pinion Gear | 5.36 | 64 | XX125-01 | Screw - Clicker Pawl | .98 |
| 25 | JX017-01 | Bushing - Crank Shaft (L) | .77 | 65 | JX110-01 | Clicker Spring | .21 |
| 26 | QW120-01 | E-Clip - Crank Shaft | .26 | 66 | JX114-01 | Clicker Pawl | .70 |
| 27 | JX002-01 | Retainer - Crank Shaft | .57 | 67 | JX084-01 | Clicker Cam | 2.88 |
| 28 | JX107-01 | Screw - Crank Shaft Retainer | .15 | 68 | JX125-01 | Screw - Clicker Spring Holder | .21 |
| 29 | JX077-01 | Kick Lever | .57 | 69 | JX103-01 | Clicker Spring Holder | 1.20 |
| 30 | JX097-01 | Spring - Kick Lever | .15 | 70 | JX022-01 | Spring - Clicker Cam | .26 |
| 31 | JX068-01 | Bushing - Release Slider Guide | 1.08 | 71 | JX041-01 | Click Cam Actuator | .36 |
| 32 | JX104-01 | Spring - Release Slider | .21 | 72 | JX075-01 | C-Clip | .21 |
| 33 | XX050-01 | Screw - Release Slider | .15 | 73 | JX109-02 | Click Lever | .52 |
| 34 | JX339-02 | Release Slider Assy | 1.80 | 74 | QW053-05 | Screw - Click Lever | .26 |
| 35 | JX102-01 | Post - Kick Lever Guide | .88 | 76 | JX121-01 | Washer - Thumb Screw | .21 |
| 36 | JX008-01 | Crank Shaft | 2.88 | 77 | FV098-01 | Idel Gear Post | .50 |
| 37 | FV112-01 | O/S Drive Gear | .50 | 78 | FV127-01 | O/S Idel Gear | 1.00 |
| 38 | JX083-01 | Trip Ratchet | .93 | 79 | FV351-01 | Spool Cover Assy | 6.65 |
| 39 | JX111-01 | Washer - Ratchet | .46 | 80 | AV125-01 | Spool Cover Screw | .70 |
| 40 | JX012-01 | Drive Gear | 7.67 | | | | |

| | | | | | |
|-------------------------|------|---|-----------|---------------------|-----|
| MODEL INTRODUCED | 1996 | EFFECTIVE DATE OF PARTS LIST/DIAGRAM | Oct. 1996 | DISCONTINUED | N/A |
|-------------------------|------|---|-----------|---------------------|-----|

Prices subject to change without notice. Prices do not include postage and handling.

