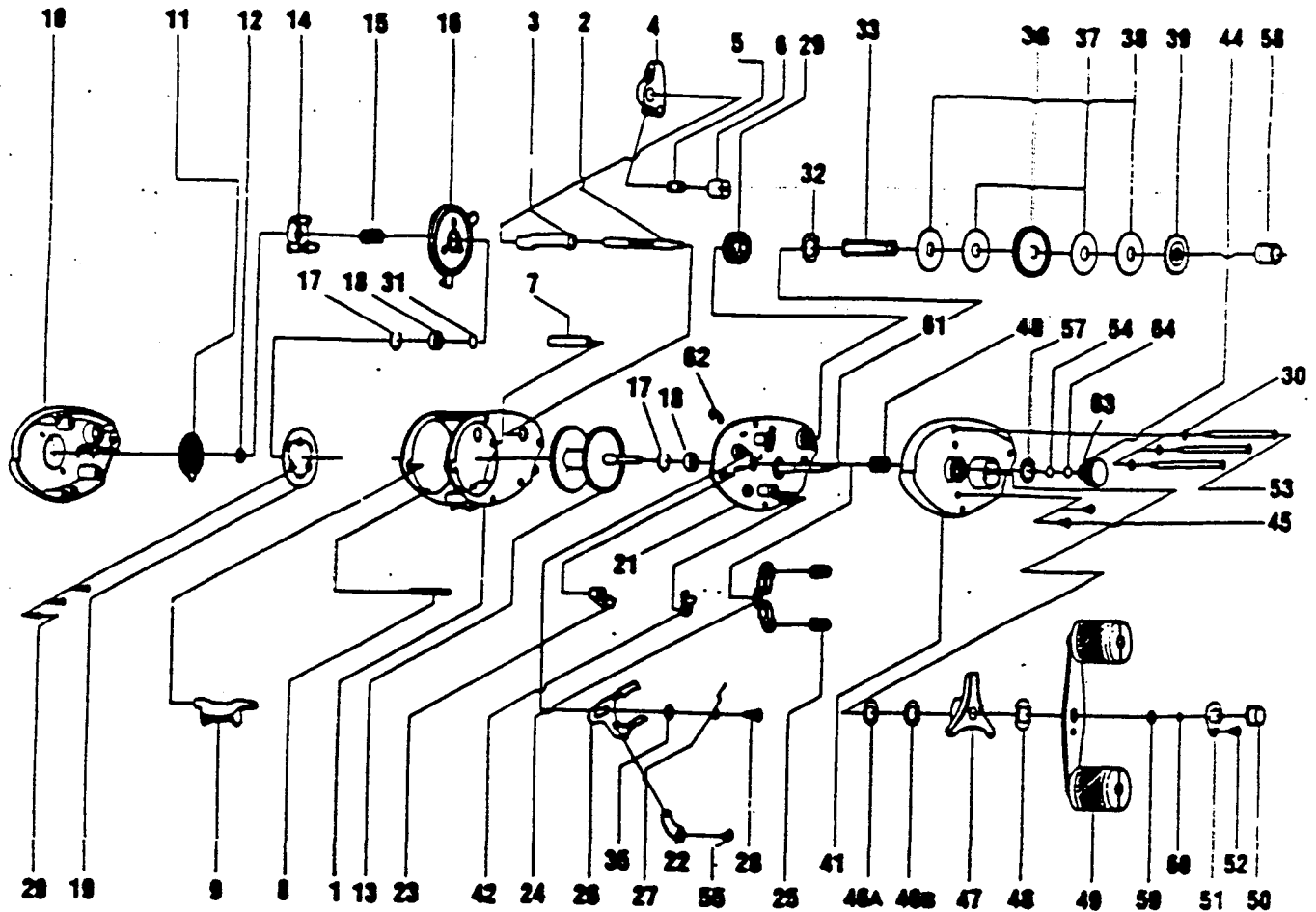


QUANTUM QL500



Key No.	Part No.	Description	Price	Key No.	Part No.	Description	Price
1	JW001	FRAME	5.80	32	NW083	TRIP RATCHET	1.24
2	JW072	WORM SHAFT	6.14	33	JW008	DRIVE SHAFT	3.69
3	NW016	WORM SHAFT GUARD	3.70	36	NW012	DRIVE GEAR	3.80
4	JW347	LINE GUARD	1.66	37	JW059	DRAG DISC	1.46
5	JW006	LINE GUIDE PAWL	1.66	38	JW045	DRAG WASHER	1.84
6	JW007	LINE GUIDE PAWL SCREW	1.78	39	JW091	ANTI-REVERSE RATCHET	1.84
7	NW061	STABILIZER BAR	1.71	40	NW311	PINION GEAR ASSY.	2.78
8	JW094	FRAME FIXED PIN	1.48	41	NW024	RIGHT SIDE COVER	9.11
9	NW009	THUMB BAR	2.09	42	JW363	ANTI-REVERSE PAWL	.91
10	NW323	LEFT SIDE COVER ASSY.	7.71	44	JW333	CAST CONTROL CAP ASSY.	2.04
11	NW026	CONTROL DIAL	3.80	45	GX4352	RIGHT SIDE CVR SCR	1.16
12	NW101	O-RING CAST CONTROL	.59	46	JW046A	THICK WAVE WASHER	1.43
13	JW321	SPOOL ASSY.	10.75	46	JW046B	THIN WAVE WASHER	1.33
14	JW028	SLIDE CAM	.91	47	NW355	DRAG KNOB ASSY.	7.01
15	JW071	SLIDE CAM SPRING	.85	48	GX4660	HANDLE WASHER	1.23
16	JW351	SPOOL COVER	3.86	49	JW318	HANDLE ASSY.	6.34
17	NW080	BEARING RETAINER	.91	50	GX4702	HANDLE NUT	.99
18	NW017	SPOOL BEARING	8.84	51	GX4703	HANDLE NUT LOCK	.91
19	NW330	MAGNET PLATE ASSY.	12.27	52	GX4704	HANDLE NUT LOCK SCR	.42
20	JW076	MAGNET PLATE SCREW	1.28	53	NW374	THUMB SCREW	.48
21	NW310	SET PLATE ASSY.	7.98	54	JW032	SPOOL TENSION KNOB	.49
22	JW036	LINK	1.23	55	JW100	LINK SCREW	.74
23	JW050	THUMB BAR CAM	.99	57	JW105	TENSION KNOB O-RING	.91
24	JW024	RIGHT SIDE COVER	9.11	58	JW058	CRANK SHAFT BUSHING	2.21
25	JW040	PINION YOKE SPRING	.91	59	JW064	SHIM CRANKSHAFT	.49
26	JW039	RELEASE SLIDER	2.27	60	GX4657	CRANK SHAFT E-CLIP	.49
27	JW102	TRIP SPRING	.91	61	JW002	SET PLATE SHAFT	1.23
28	JW057	RELEASE SLIDER SCREW	.91	62	GX4665	SHAFT CLIP-E	.49
29	JW085	LEVEL WIND GEAR	3.14	63	JW082	CAST CONTROL CUSHION	.49
30	GX109	WASHER-THUMB SCREW	.48	64	JW038	SPOOL TN. KN. WSHR.-SQ.	.49

Prices subject to change without notice. Prices do not include postage and handling.

PLEASE ORDER BY PART NUMBER

Rev. 5/83

Zebco Division Brunswick Corporation, Box 270, Tulsa, OK 74101 USA 918-836-5581

